

# Quick-fitting Type Coupling Light Coupling 20 Series

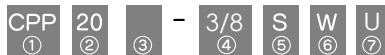
## Package : 1 pc. in a bag

- The Light Coupling series are couplings incorporating the push-in connector.
- The socket comes with a stop mechanism that blocks air flow simultaneously with the removal of the plug.
- The coupling is designed for quick disconnection as easy as detaching with only one hand
- The plug comes in not only the normal type but also the silencer type and the self seal type. The silencer type reduces the noise and shock at the release of the residual pressure, whereas the self seal type does not allow the flow of the residual pressure.

## Specifications

Fluid admitted	Air	
Service pressure range	0~150psi	0~0.9MPa(0~9.9kgf/cm <sup>2</sup> )
Service temperature range	32~140°F	0~60°C

## Model Designation(Example)



### ①Type

CPS:Socket  
CPP:Plug  
QMC:Module parts

### ②Socket & Plug connection size(code 20)

(Effective sectional area 20mm<sup>2</sup> - Cv 0.16)

Cv factor is reference value converted by multiplying effective cross-sectional area by 0.0542

### ③Plug type choice

L:Elbow  
No code: Straight

### ④Tube dia.

	in. size				mm size			
Code	1/4	5/16	3/8	1/2	6	8	10	12
Dia.	φ 1/4	φ 5/16	φ 3/8	φ 1/2	φ 6mm	φ 8mm	φ 10mm	φ 12mm

### Thread size - NPT or R

	American standard taper thread			Taper pipe thread		
Code	N2	N3	N4	02	03	04
Dia.	NPT1/4	NPT3/8	NPT1/2	R1/4	R3/8	R1/2

❖ R thread is same as BSPT

### ⑤Plug function

S:Silencer type  
C: Self seal type  
No code: Not silencer nor check valve type

### ⑥Color

W:Ivory  
B:Black

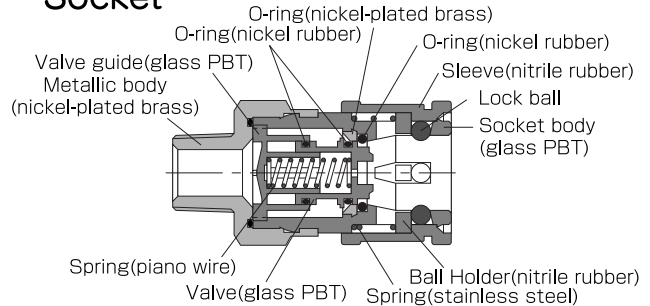
### ⑦U:Hexagon flat-to-flat inch spec.(NPT)

No code: metric thread or push-in connection models

※The socket and the plug are to be purchased separately.

## Construction

### Socket



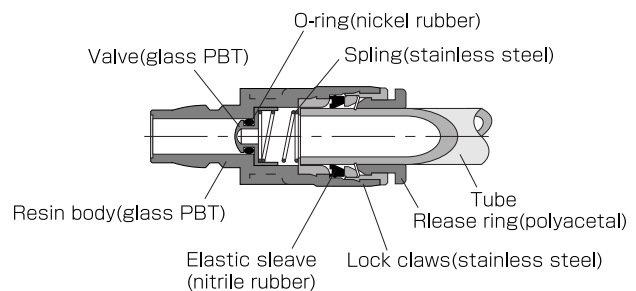
### Code



### Plug

Check Valve Type

※All Sockets and plug with check valve only.

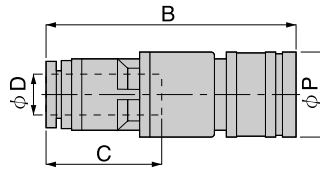


## Detailed Safety Instructions

Before using the PISCO device, be sure to read the "Safety Instructions", "Common Safety Instructions for Products"

**CPS**

Tube Fitting Built-in Socket



Unit : inch

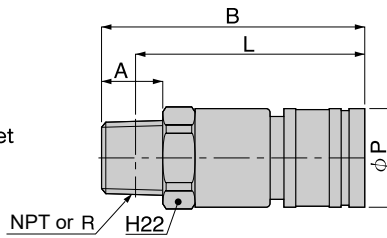
Model	Tube dia. $\phi$ D1	B	$\phi$ P	C	Weight (OZ)	Eff.a. mm <sup>2</sup>	CV
CPS20-1/4□	1/4	2.56	0.79	0.98	1.06	11.50	0.62
CPS20-5/16□	5/16	2.17	0.79	0.98	0.81	19.80	1.07
CPS20-3/8□	3/8	2.83	0.79	0.98	1.77	22.60	1.22
CPS20-1/2□	1/2	2.89	0.79	0.98	1.91	23.00	1.25

Unit : inch

Model	Tube dia. $\phi$ D1(mm)	B	$\phi$ P	C	Weight (OZ)	Eff.a. mm <sup>2</sup>	CV
CPS20-6□	6	2.16	0.98	0.67	0.81	11.50	0.62
CPS20-8□	8	2.16	0.98	0.73	0.81	19.80	1.07
CPS20-10□	10	2.36	0.98	0.81	0.99	22.60	1.22
CPS20-12□	12	2.36	0.98	0.92	1.02	23.00	1.25

**CPS**

Taper Thread Built-in Socket



Unit : inch

Model	NPT	A	B	L	$\phi$ P	H	Weight (OZ)	Eff.a. mm <sup>2</sup>	CV
CPS20-N2U□	1/4	0.43	1.97	1.73	0.98	7/8	1.45	22.90	1.24
CPS20-N3U□	3/8	0.47	2.01	1.75	0.98	7/8	1.55	24.10	1.31
CPS20-N4U□	1/2	0.59	2.13	1.81	0.98	7/8	1.92	24.20	1.31

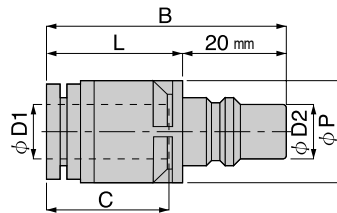
Unit : inch

Model	R	A	B	L	$\phi$ P	H	Weight (OZ)	Eff.a. mm <sup>2</sup>	CV
CPS20-02□	R1/4	0.43	1.97	1.73	0.98	0.87	1.44	22.90	1.24
CPS20-03□	R3/8	0.47	2.01	1.75	0.98	0.87	1.53	24.10	1.31
CPS20-04□	R1/2	0.59	2.13	1.81	0.98	0.87	1.88	24.20	1.31

❖ R thread is same as BSPT

**CPP**

Tube Fitting Built-in Straight



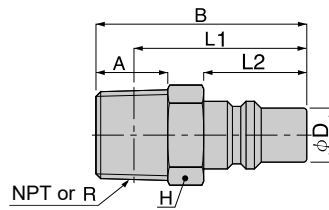
Unit : inch

Model	Tube dia. $\phi$ D1	$\phi$ D2	B	L	$\phi$ P	C	Weight (OZ)	Eff.a. mm <sup>2</sup>	CV
CPP20-1/4□	1/4	0.43	1.93	0.75	0.63	0.67	0.48	12.50	0.68
CPP20-5/16□	5/16	0.43	1.54	0.75	0.63	0.73	0.23	23.30	1.26
CPP20-3/8□	3/8	0.43	2.27	1.00	0.79	0.83	1.24	33.10	1.79
CPP20-1/2□	1/2	0.43	2.33	1.00	0.79	0.93	1.38	33.10	1.79
CPP20-1/4S□	1/4	0.43	2.19	1.00	0.63	0.67	0.56	10.10	0.55
CPP20-5/16S□	5/16	0.43	1.79	1.00	0.63	0.73	0.31	18.00	0.98
CPP20-3/8S□	3/8	0.43	2.66	1.40	0.83	0.83	1.42	23.60	1.28
CPP20-1/2S□	1/2	0.43	2.72	1.40	0.83	0.93	1.61	26.40	1.43
CPP20-1/4C□	1/4	0.43	2.19	1.00	0.63	0.67	0.56	10.10	0.55
CPP20-5/16C□	5/16	0.43	1.79	1.00	0.63	0.73	0.31	18.00	0.98
CPP20-3/8C□	3/8	0.43	2.66	1.40	0.83	0.83	1.42	23.70	1.28
CPP20-1/2C□	1/2	0.43	2.72	1.40	0.83	0.93	1.61	26.40	1.43

Unit : inch

Model	Tube dia. $\phi$ D(mm)	$\phi$ D2	B	L	$\phi$ P	C	Weight (OZ)	Eff.a. mm <sup>2</sup>	CV
CPP20-6□	6	0.43	1.54	0.75	0.63	0.67	0.21	12.50	0.68
CPP20-8□	8	0.43	1.54	0.75	0.63	0.73	0.23	23.30	1.26
CPP20-10□	10	0.43	1.79	1.00	0.79	0.81	0.44	33.80	1.83
CPP20-12□	12	0.43	1.79	1.00	0.79	0.92	0.49	33.10	1.79
CPP20-6S□	6	0.43	1.79	1.00	0.63	0.67	0.30	10.10	0.55
CPP20-8S□	8	0.43	1.79	1.00	0.63	0.73	0.32	18.00	0.98
CPP20-10S□	10	0.43	2.18	1.40	0.83	0.81	0.62	26.00	1.41
CPP20-12S□	12	0.43	2.18	1.40	0.83	0.92	0.72	26.40	1.43
CPP20-6C□	6	0.43	1.79	1.00	0.63	0.67	0.28	10.10	0.55
CPP20-8C□	8	0.43	1.79	1.00	0.63	0.73	0.32	18.00	0.98
CPP20-10C□	10	0.43	2.18	1.40	0.83	0.81	0.62	26.00	1.41
CPP20-12C□	12	0.43	2.18	1.40	0.83	0.92	0.70	26.40	1.43

## CPP Taper Thread Type



Unit : inch

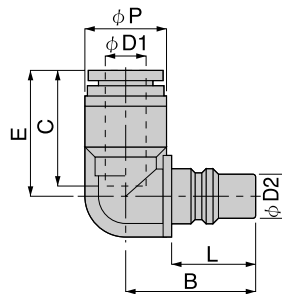
Model	φD	NPT	A	B	L1	L2	H	Weight (OZ)	Eff.a. mm2	CV
CPP20-N2U	0.43	1/4	0.43	1.46	1.02	0.79	9/16	0.89	39.50	2.14
CPP20-N3U	0.43	3/8	0.47	1.50	1.04	0.79	11/16	1.34	39.50	2.14

Unit : inch

Model	φD	R	A	B	L1	L2	H	Weight (OZ)	Eff.a. mm2	CV
CPP20-02	0.43	R1/4	0.43	1.46	1.22	0.79	0.55	0.84	39.50	2.14
CPP20-03	0.43	R3/8	0.47	1.50	1.24	0.79	0.67	1.30	39.50	2.14

❖ R thread is same as BSPT

## CPP Tube Fitting Built-in Elbow



Unit : inch

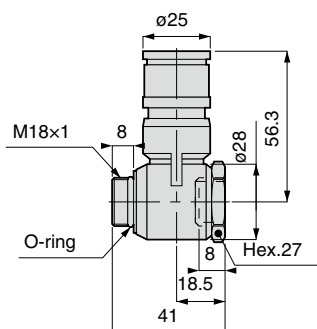
Model	Tube dia. φD1	φD2	B	L	φP	C	E	Weight (OZ)	Eff.a. mm2	CV
CPP20L-1/4□	1/4	0.43	1.10	0.79	0.57	0.67	1.34	0.52	10.70	0.58
CPP20L-5/16□	5/16	0.43	1.10	0.79	0.57	0.73	0.94	0.26	17.50	0.95
CPP20L-3/8□	3/8	0.43	1.22	0.79	0.83	0.83	1.65	1.32	28.90	1.57
CPP20L-1/2□	1/2	0.43	1.22	0.79	0.83	0.93	1.71	1.45	29.00	1.57

Unit : inch

Model	Tube dia. φD1 (mm)	φD2	B	L	φP	C	E	Weight (OZ)	Eff.a. mm2	CV
CPP20L-6□	6	0.43	1.10	0.79	0.57	0.67	0.94	0.26	10.70	0.58
CPP20L-8□	8	0.43	1.10	0.79	0.57	0.73	0.94	0.26	17.50	0.95
CPP20L-10□	10	0.43	1.22	0.79	0.83	0.81	1.18	0.53	26.30	1.43
CPP20L-12□	12	0.43	1.22	0.79	0.83	0.92	1.18	0.56	29.00	1.57

## GMC Coupling Module

RoHS compliant



Unit : mm

Model code	Weight (g)	CAD file name
GMC20	84	TFLC-004

Coupling module can be connected with Main Block (assembling thread size: M18x1), as well as with other coupling modules.

# Quick-fitting Type Coupling Light Coupling 15 Series

## Package : 1pc. in a bag

- The Light Coupling models are couplings incorporating the push-in fitting joint for pneumatic piping.
- The socket comes with a stop mechanism that stops air simultaneously with the removal of the plug.
- The resin couplings are lightweight and compact.

## Specifications

Fluid admitted	Air	
Service pressure range	0~150psi	0~0.9MPa(0~9.9kgf/cm <sup>2</sup> )
Service temperature range	32~140°F	0~60°C

## Model Designation(Example)



①Type  
CPS:Socket  
CCP:Plug

②Socket & Plug connection size(code 15)  
(Effective sectional area 15mm<sup>2</sup> - Cv 0.81)

Cv factor is reference value converted by multiplying effective cross-sectional area by 0.0542

③Socket type choice  
No code: Straight type  
M: Bulkhead type

Plug type choice  
No code: Straight type  
L: Elbow type

④Tube dia.(ΦD)

Code	in. size			mm size		
	1/4	5/16	3/8	6	8	10
Dia.	φ1/4	φ5/16	φ3/8	φ6mm	φ8mm	φ10mm

Thread size - NPT or R (R stands for BSPT)

Code	American standard taper pipe thread			Taper pipe thread		
	N1	N2	N3	01	02	03
Dia.	NPT1/8	NPT1/4	NPT3/8	R1/8	R1/4	R3/8

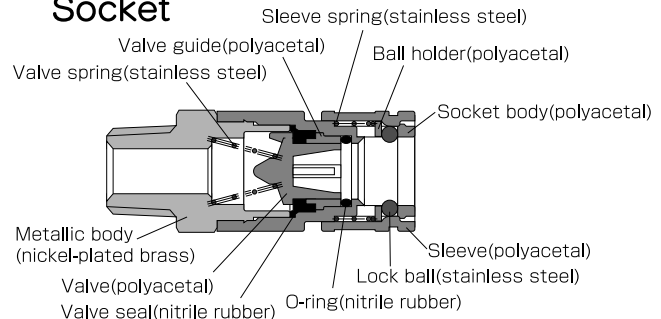
⑤Color  
W: Ivory  
B: Black

⑥U: Hexagon flat-to flat inch spec.(NPT)  
No code: metric thread or push-in connection models

- ※ 15 series socket itself does not have vacuum retention function.
- ※ The socket and the plug are to be purchased separately.

## Construction

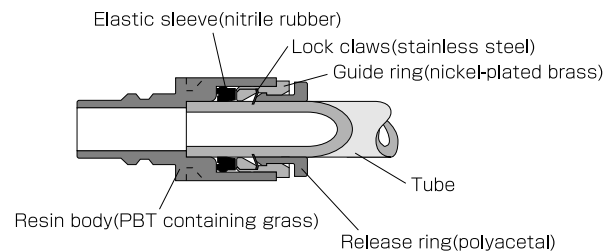
### Socket



code



### Plug



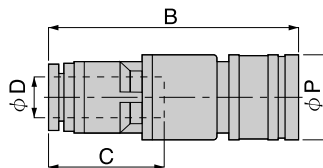
※ All Sockets and plug with check valve only.

## Detailed Safety Instructions

Before using the PISCO device, be sure to read the "Safety Instructions", "Common Safety Instructions for Products"

# CPS

## Tube Fitting Built-in Socket



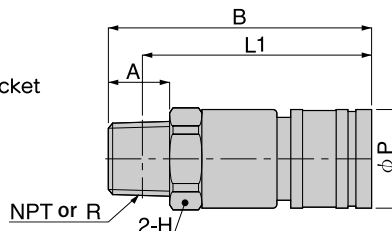
Unit : inch

Model	Tube dia. $\phi D$	B	L	$\phi P$	C	Weight (OZ)	Eff.a. mm <sup>2</sup>	CV
CPS15-1/4□	1/4	2.36	0.65	0.71	0.67	0.71	11.00	0.60
CPS15-5/16□	5/16	2.01	0.65	0.71	0.73	0.48	18.00	0.98
CPS15-3/8□	3/8	2.62	0.65	0.71	0.83	1.40	17.60	0.95



# CPS

## Taper Thread Built-in Socket



Unit : inch

Model	NPT	A	B	L1	L2	$\phi P$	H	Weight (OZ)	Eff.a. mm <sup>2</sup>	CV
CPS15-N1U□	1/8	0.31	1.73	1.57	0.65	0.71	11/16	0.94	18.00	0.98
CPS15-N2U□	1/4	0.43	1.85	1.61	0.65	0.71	11/16	1.07	18.00	0.98
CPS15-N3U□	3/8	0.47	1.89	1.63	0.65	0.71	11/16	1.36	18.00	0.98

Unit : inch

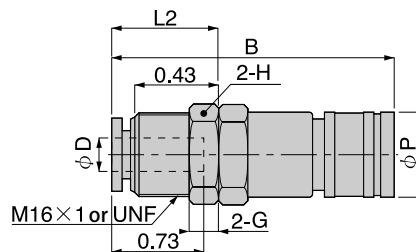
Model	R	A	B	L1	L2	$\phi P$	H	Weight (OZ)	Eff.a. mm <sup>2</sup>	CV
CPS15-01□	R1/8	0.31	1.73	1.57	0.65	0.71	0.67	0.90	18.00	0.98
CPS15-02□	R1/4	0.43	1.85	1.61	0.65	0.71	0.67	1.02	18.00	0.98
CPS15-03□	R3/8	0.47	1.89	1.63	0.65	0.71	0.67	1.32	18.00	0.98

❖ R thread is same as BSPT



# CPS

## Bulkhead Type



Unit : inch

Model	Tube dia. $\phi D$	UNF	B	L1	L2	$\phi P$	H	G	Weight (OZ)	Eff.a. mm <sup>2</sup>	CV
CPS15M-5/16U□	5/16	5/8-18UNF	2.01	2.01	0.65	0.71	3/4	0.22	1.29	18.00	0.98

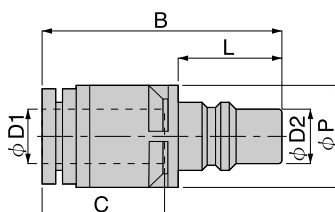
Unit : inch

Model	Tube dia. $\phi D$ (mm)	Metric	B	L1	L2	$\phi P$	H	G	Weight (OZ)	Eff.a. mm <sup>2</sup>	CV
CPS15M-8□	8	M16	2.01	2.01	0.65	0.71	0.75	0.16	1.25	18.00	0.98



# CPP

## Tube Fitting Built-in Straight



Unit : inch

Model	Tube dia. $\phi D1$	$\phi D2$	B	L	$\phi P$	C	Weight (OZ)	Eff.a. mm <sup>2</sup>	CV
CPP15-1/4□	1/4	0.31	1.57	0.59	0.59	0.67	0.43	11.00	0.60
CPP15-5/16□	5/16	0.31	1.38	0.59	0.59	0.73	0.20	23.00	1.25
CPP15-3/8□	3/8	0.31	2.01	0.59	0.71	0.83	1.12	24.30	1.32

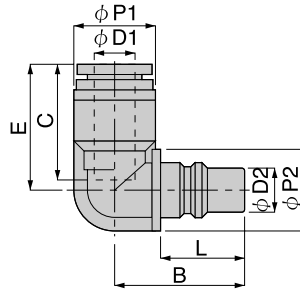
Unit : inch

Model	Tube dia. $\phi D1$ (mm)	$\phi D2$	B	L	$\phi P$	C	Weight (OZ)	Eff.a. mm <sup>2</sup>	CV
CPP15-6□	6	0.31	1.24	0.59	0.59	0.67	0.16	11.00	0.60
CPP15-8□	8	0.31	1.38	0.59	0.59	0.73	0.21	24.00	1.30
CPP15-10□	10	0.31	1.54	0.59	0.71	0.83	0.32	23.00	1.25



**CPP**

Tube Fitting Bult-in Elbow



Unit : inch

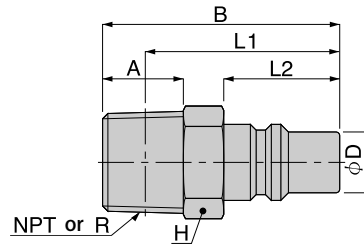
Model	Tube dia. $\phi D1$	$\phi D2$	B	L	$\phi P1$	$\phi P2$	C	E	Weight (OZ)	Eff.a. mm2	CV
CPP15L-1/4□	1/4	0.31	0.89	0.59	0.51	0.59	0.67	1.24	0.45	10.00	0.54
CPP15L-5/16□	5/16	0.31	0.93	0.59	0.59	0.59	0.73	0.93	0.23	18.00	0.98
CPP15L-3/8□	3/8	0.31	0.98	0.59	0.71	0.71	0.83	1.56	1.18	19.50	1.06

Unit : inch

Model	Tube dia. $\phi D1$ (mm)	$\phi D2$	B	L	$\phi P1$	$\phi P2$	C	E	Weight (OZ)	Eff.a. mm2	CV
CPP15L-6□	6	0.31	0.89	0.59	0.51	0.59	0.67	0.85	0.18	10.00	0.54
CPP15L-8□	8	0.31	0.92	0.59	0.59	0.59	0.73	0.92	0.23	18.00	0.98
CPP15L-10□	10	0.31	0.98	0.59	0.71	0.71	0.83	1.08	0.39	18.00	0.98

**CPP**

Male Straight



Unit : inch

Model	$\phi D$	NPT	A	B	L1	L2	H	Weight (OZ)	Eff.a. mm2	CV
CPP15-N1U	0.31	1/8	0.31	1.14	0.98	0.59	9/16	0.45	23.00	1.25
CPP15-N2U	0.31	1/4	0.43	1.26	1.02	0.59	9/16	0.69	25.00	1.36
CPP15-N3U	0.31	3/8	0.47	1.30	1.04	0.59	11/16	1.16	23.00	1.25

Unit : inch

Model	$\phi D$	R	A	B	L1	L2	H	Weight (OZ)	Eff.a. mm2	CV
CPP15-01	0.31	R1/8	0.31	1.14	0.98	0.59	0.55	0.48	23.00	1.25
CPP15-02	0.31	R1/4	0.43	1.26	1.02	0.59	0.55	0.69	25.00	1.36
CPP15-03	0.31	R3/8	0.47	1.30	1.04	0.59	0.67	1.13	23.00	1.25

❖ R thread is same as BSPT

# Quick-fitting Type Miniature Coupling Light Coupling E3 & E7 Series

## Package: 1 pc. in a bag

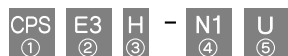
- These are miniature coupling models incorporating the quick-fitting joint
- The socket comes with a stop mechanism that stops air flow simultaneously with the removal of the plug.
- The compact design permits piping in a limited space.
- The coupling can be disconnected with one hand.

## Specifications

Fluid admitted	Air	water(conditional※)
Service pressure range	0~150psi(0~0.9MPa)	0~42.7psi(0~0.3MPa)
Service temperature range	32~140°F	0~60°C

1. Service temperature: 32 to 140°F (0 to 60°C)
2. Surge pressure must be controlled lower than max. operating when using water as a fluid.
3. Tap water can be used. Consult us for using other kind of water.
4. Be sure to put Insert Ring into the tubing edge when using water as a fluid.

## Model Designation(Example)



①Type  
CPS:Socket  
CCP:Plug

### ②Socket & Plug connection size(code E3, E7)

Code	E3	E7
Effective sectional area	3mm <sup>2</sup>	7mm <sup>2</sup>
Cv factor	0.16	0.38

**Cv factor is reference value converted by multiplying effective cross-sectional area by 0.0542**

※E3 and E7 can not be connected.

### ③Socket and plug type

Socket  
H:Universal Elbow  
M:Bulkhead Type  
No code:Straight  
Plug  
H:Universal Elbow  
L: Elbow  
No code:Straight

### ④Tube dia.

Code	in. size		mm size	
		5/32	1/8	4
Dia.	φ5/32	φ1/8	φ4mm	φ6mm

	Unified fine thread	American standard taper pipe thread	Metric thread	Taper pipe thread
Code	U10	N1	M5	O1
Size	10-32UNF	NPT1/8	M5×0.8	R1/8

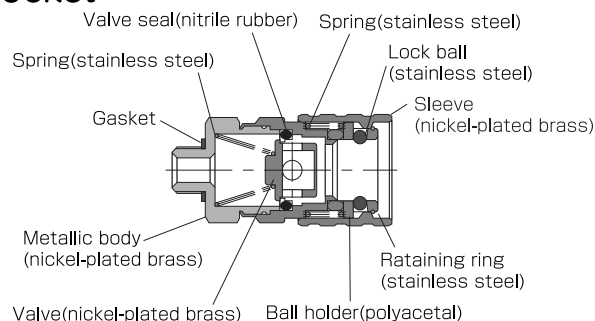
※The socket and the plug are to be purchased separately.

### ⑤U:Hexagon flat-to flat inch spec.(NPT)

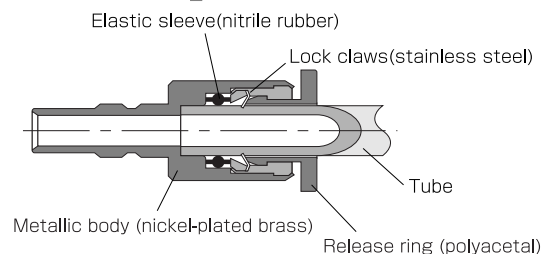
No code: metric thread or push-in connection models

## Construction

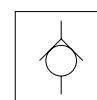
### Socket



### Plug



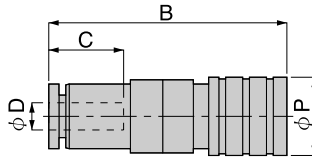
code



※All Sockets and plug with check valve only.

**CPS**

Straight Tube Fitting



Unit : inch

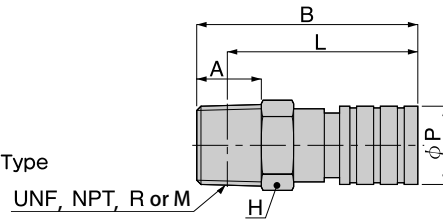
Model	Tube dia. $\phi D$	B	$\phi P$	C	Weight (OZ)	Eff.a. mm <sup>2</sup>	CV
CPSE3-1/8	1/8	1.16	0.37	0.43	0.30	3.30	0.18
CPSE3-5/32	5/32	1.16	0.37	0.43	0.30	3.30	0.18

Unit : inch

Model	Tube dia. $\phi D$ (mm)	B	$\phi P$	C	Weight (OZ)	Eff.a. mm <sup>2</sup>	CV
CPSE3-4	4	1.16	0.37	0.43	0.30	3.30	0.18
CPSE7-6	6	1.26	0.45	0.47	0.44	7.70	0.42

**CPS**

Straight Thread Type



Unit : inch

Model	UNF & NPT	A	B	L	$\phi P$	H	Weight (OZ)	Eff.a. mm <sup>2</sup>	CV
CPSE3-U10U	10-32UNF	0.14	0.87	0.61	0.37	7/16	0.27	3.20	0.17
CPSE3-N1U	1/8	0.31	1.08	0.93	0.37	7/16	0.42	3.80	0.21
CPSE7-U10U	10-32UNF	0.14	0.96	0.65	0.45	7/16	0.38	4.00	0.22
CPSE7-N1U	1/8	0.31	1.16	1.00	0.45	7/16	0.49	8.30	0.45

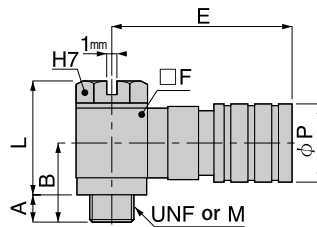
Unit : inch

Model	R or M	A	B	L	$\phi P$	H	Weight (OZ)	Eff.a. mm <sup>2</sup>	CV
CPSE3-M5	M5	0.14	0.87	0.61	0.37	0.35	0.23	3.20	0.17
CPSE3-01	R1/8	0.31	1.08	0.92	0.37	0.39	0.39	3.80	0.21
CPSE7-M5	M5	0.14	0.96	0.65	0.45	0.39	0.33	4.00	0.22
CPSE7-01	R1/8	0.31	1.16	1.00	0.45	0.39	0.44	8.30	0.45

❖ R thread is same as BSPT

**CPS**

Universal Elbow Thread Type



Unit : inch

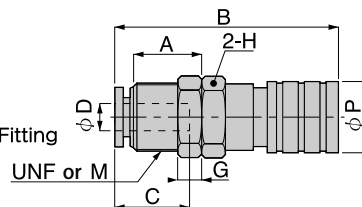
Model	UNF	A	B	$\phi P$	E	F	H	Weight (OZ)	Eff.a. mm <sup>2</sup>	CV
CPSE3H-U10U	10-32UNF	0.12	0.36	0.37	0.85	0.31	5/16	0.38	2.00	0.11
CPSE7H-U10U	10-32UNF	0.12	0.42	0.45	0.87	0.39	5/16	0.59	2.60	0.14

Unit : inch

Model	Metric	A	B	$\phi P$	E	F	Weight (OZ)	Eff.a. mm <sup>2</sup>	CV
CPSE3H-M5	M5×0.8	0.12	0.36	0.37	0.85	0.31	0.37	2.00	0.11
CPSE7H-M5	M5×0.8	0.12	0.42	0.45	0.87	0.39	0.58	2.60	0.14

**CPS**

Straight Bulkhead Tube Fitting



Unit : inch

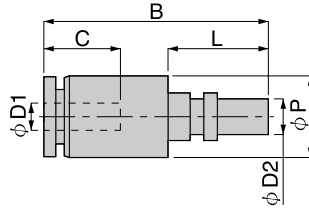
Model	Tube dia. $\phi D$	UNF	A	B	$\phi P$	C	H	G	Weight (OZ)	Eff.a. mm <sup>2</sup>	CV
CPSE3M-1/8U	5/32	7/16-20UNF	0.31	1.16	0.37	0.43	1/2	0.12	0.48	3.30	0.18
CPSE3M-5/32U	1/8	7/16-20UNF	0.31	1.16	0.37	0.43	1/2	0.12	0.48	3.30	0.18

Unit : inch

Model	Tube dia. $\phi D$ (mm)	Metric	A	B	$\phi P$	C	H	G	Weight (OZ)	Eff.a. mm <sup>2</sup>	CV
CPSE3M-4	4	M9	0.33	1.16	0.37	0.43	0.39	0.12	0.35	3.30	0.18
CPSE7M-6	6	M12	0.37	1.26	0.45	0.47	0.55	0.16	0.62	7.70	0.42



**CPP** Straight Tube Fitting



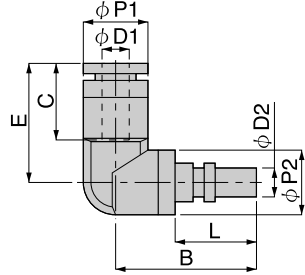
Unit : inch

Model	Tube dia. $\phi D1$	$\phi D2$	B	L	$\phi P$	C	Weight (OZ)	Eff.a. mm <sup>2</sup>	CV
CPPE3-1/8	1/8	0.14	0.85	0.35	0.31	0.43	0.11	4.20	0.23
CPPE3-5/32	5/32	0.14	0.85	0.35	0.31	0.43	0.11	4.20	0.23

Unit : inch

Model	Tube dia. $\phi D1$ (mm)	$\phi D2$	B	L	$\phi P$	C	Weight (OZ)	Eff.a. mm <sup>2</sup>	CV
CPPE3-4	4	0.14	0.85	0.35	0.31	0.43	0.11	4.20	0.23
CPPE7-6	6	0.22	0.91	0.39	0.39	0.47	0.16	11.40	0.62

**CPP** Elbow Tube Fitting



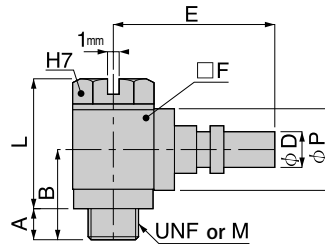
Unit : inch

Model	Tube dia. $\phi D1$	$\phi D2$	B	L	$\phi P1$	$\phi P2$	C	E	Weight (OZ)	Eff.a. mm <sup>2</sup>	CV
CPPE3L-1/8	1/8	0.14	0.63	0.35	0.31	0.31	0.43	0.59	0.12	3.50	0.19
CPPE3L-5/32	5/32	0.14	0.63	0.35	0.31	0.31	0.43	0.59	0.12	3.50	0.19

Unit : inch

Model	Tube dia. $\phi D1$ (mm)	$\phi D2$	B	L	$\phi P1$	$\phi P2$	C	E	Weight (OZ)	Eff.a. mm <sup>2</sup>	CV
CPPE3L-4	4	0.14	0.63	0.35	0.31	0.31	0.43	0.59	0.12	3.50	0.19
CPPE7L-6	6	0.22	0.75	0.39	0.41	0.39	0.47	0.65	0.19	8.80	0.48

**CPP** Universal Elbow Thread Type



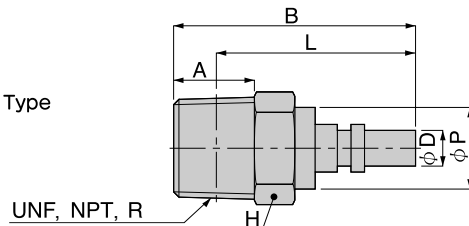
Unit : inch

Model	UNF	$\phi D$	A	B	L	$\phi P$	E	H	$\square F$	Weight (OZ)	Eff.a. mm <sup>2</sup>	CV
CPPE3H-U10U	10-32UNF	0.14	0.12	0.63	0.51	0.31	0.71	5/16	0.31	0.23	1.80	0.10
CPPE7H-U10U	10-32UNF	0.22	0.14	0.73	0.59	0.39	0.73	5/16	0.39	0.39	2.60	0.14

Unit : inch

Model	Metric	$\phi D$	A	B	L	$\phi P$	E	H	$\square F$	Weight (OZ)	Eff.a. mm <sup>2</sup>	CV
CPPE3H-M5	M5×0.8	0.14	0.12	0.63	0.51	0.31	0.71	0.28	0.31	0.23	1.80	0.10
CPPE7H-M5	M5×0.8	0.22	0.14	0.73	0.59	0.39	0.73	0.28	0.39	0.37	2.60	0.14

**CPP** Straight Thread Type



Unit : inch

Model	$\phi D$	UNF&NPT	A	B	L	$\phi P$	H	Weight (OZ)	Eff.a. mm <sup>2</sup>	CV
CPPE3-U10U	0.14	10-32UNF	0.14	0.61	0.35	0.31	9/32	0.06	4.00	0.22
CPPE3-N1U	0.14	1/8	0.31	0.91	0.35	0.31	7/16	0.31	4.30	0.23
CPPE7-U10U	0.22	10-32UNF	0.14	0.65	0.39	0.39	5/16	0.12	4.10	0.22
CPPE7-N1U	0.22	1/8	0.31	1.02	0.39	0.39	7/16	0.32	12.10	0.66

Unit : inch

Model	$\phi D$	R or M	A	B	L	$\phi P$	H	Weight (OZ)	Eff.a. mm <sup>2</sup>	CV
CPPE3-M5	0.14	M5	0.14	0.61	0.35	0.31	0.28	0.07	4.00	0.22
CPPE3-01	0.14	R1/8	0.31	0.91	0.35	0.31	0.39	0.28	4.30	0.23
CPPE7-M5	0.22	M5	0.14	0.65	0.39	0.39	0.35	0.14	4.10	0.22
CPPE7-01	0.22	R1/8	0.31	1.02	0.39	0.39	0.39	0.28	2.10	0.11

❖ R thread is same as BSPT