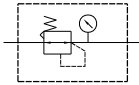


PAR200 Series

AIR UNITS (F.R.L.UNIT)



Symbol



Specifications

Model	PAR200	
Bore No.	01	02
Port size	1/8	1/4
Medium	Air	
Max. operating pressure	1 MPa	
Proof pressure	1.5 MPa	
Regulated pressure range	Standard: 0.05~0.85 MPa	
Ambient temperature	-5 ~ +60°C (No freezing)	
Attachment	Bracket	
Option	Pressure gauge(PG-40)	
Weight	190 g	

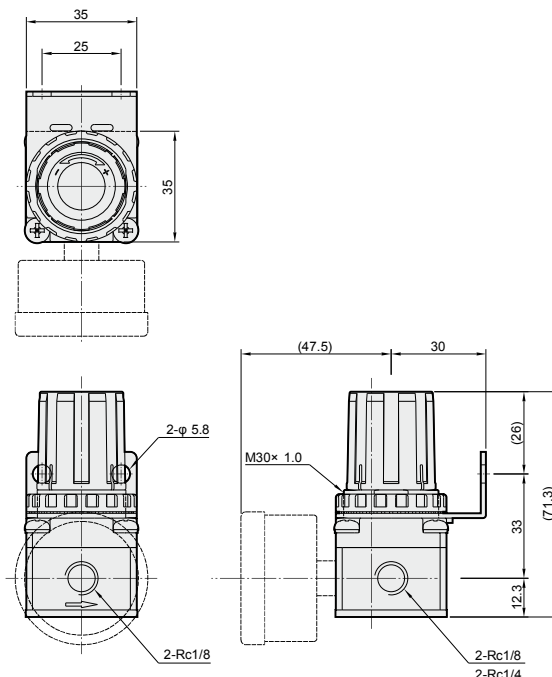
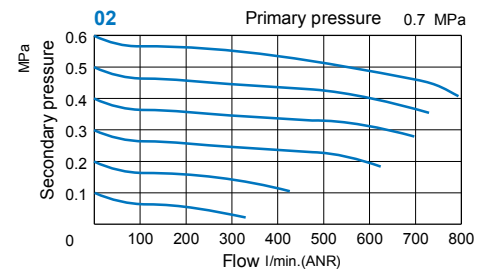
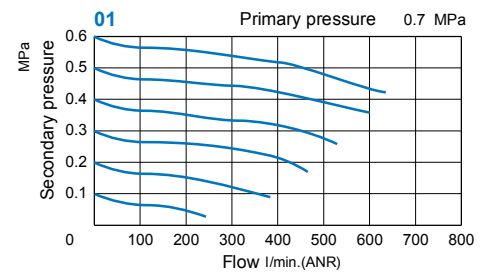
Order example

PAR200 — **02** — **C**

Model	Port Size	Regulation	Gauge Option
PAR200	01 1/8	BLANK 0.05~0.85 Mpa	C Round Gauge (PG-40)
	02 1/4	1K 0.05~0.1 Mpa	
		2K 0.05~0.2 Mpa	
		3K 0.05~0.3 Mpa	
		4K 0.05~0.4 Mpa	

Thread Type	
BLANK	RC Thread
G	G Thread
N	NPT Thread

Flow feature

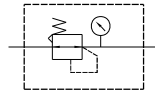


PAR302 Series

AIR UNITS (F.R.L.UNIT)



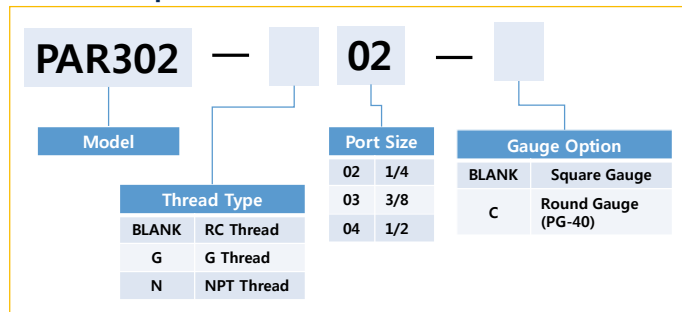
Symbol



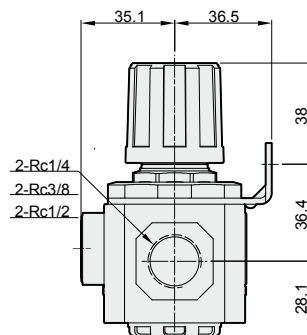
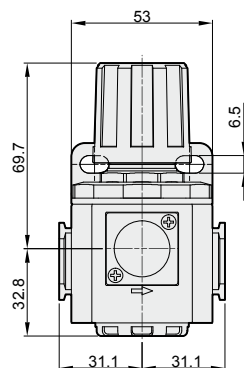
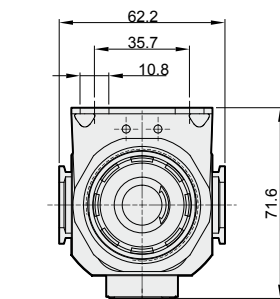
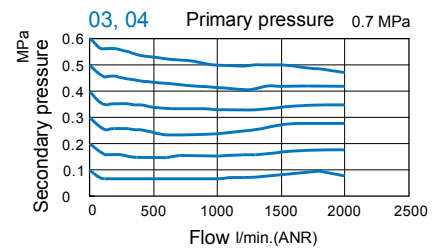
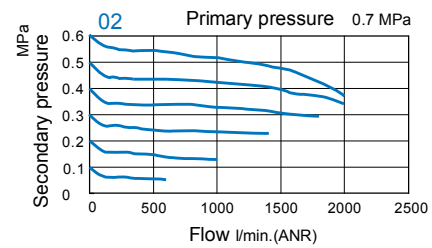
Specifications

Model	PAR302		
Bore No.	02	03	04
Port size	1/4	3/8	1/2
Medium	Air		
Max. operating pressure	1 MPa		
Proof pressure	1.5 MPa		
Regulated pressure range	0.1~0.85MPa		
Ambient temperature	-5 ~ +60°C (No freezing)		
Attachment	Pressure gauge(PG-20), L-type Bracket		
Weight	270 g		

Order example



Flow feature

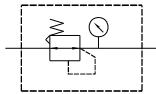


PAR403 Series

AIR UNITS (F.R.L.UNIT)



Symbol



Specifications

Model	PAR403		
Bore No.	02	03	04
Port size	1/4	3/8	1/2
Medium	Air		
Max. operating pressure	1 MPa		
Proof pressure	1.5 MPa		
Regulated pressure range	0.1~0.85MPa		
Ambient temperature	-5 ~ +60°C (No freezing)		
Attachment	Pressure gauge(PG-20), L-type Bracket		
Weight	450 g		

Order example

PAR403 — **02**

Model		Port Size	Gauge Option	
Thread Type	BLANK	02 1/4	BLANK	Square Gauge
	G	03 3/8	C	Round Gauge (PG-40)
	N	04 1/2		

Flow feature

