

Series PR4

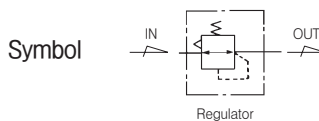
Regulator 3/8" and 1/2"



Standard Specifications

| | | |
|---|---------------------------------|--|
| Fluid | Air | |
| Max. Operating Pressure (MPa) | 1.0(140psi) | |
| Proof Pressure (MPa) | 1.5(200psi) | |
| Set Pressure (MPa) | Standard | 0.05~1.0(7~140psi) |
| | Made to Order Specifications | 0.05~0.2(7~30psi), 0.05~0.4(7~60psi), 0.05~1.5(7~200psi) |
| Ambient and Fluid Temperature (°C) | -5~60(23~140° F) (Non-freezing) | |
| Flow Capacity ※ (N l /min) | 3/8 " | 5,100(99scfm) |
| | 1/2 " | 7,700(152scfm) |
| Construction | Relieving Style | |
| Port Size for Pressure Gauge (Rc (PT), NPT) | 1/8 " | |
| Weight (kg) | 0.56(4.14lb) | |

※ Test conditions : Supply pressure 0.7MPa(100psi), pre-set pressure 0.6MPa(90psi)



How to Order

PR 4 — * 04 B G — *

Series (Regulator Unit)

Thread

| | |
|-------|--------|
| Blank | Rc(PT) |
| N | NPT |
| G | G(PF) |

Port Size

| | |
|----|-----|
| 03 | 3/8 |
| 04 | 1/2 |

Bracket Option

| | |
|-------|---------------------|
| Blank | None |
| B | Bracket + Panel Nut |
| B1 | Panel Nut |

Note1) Separately packed. Not assembled.

Other Option

| | | | | |
|-------|--------------------------------|------|-------------------------------|----------|
| Blank | Set at 0 to 1.0 MPa (Standard) | K | Built-in Check Valve | Note1) |
| 2 | Set at 0 to 0.2 MPa | R | Flow Direction : Right → Left | |
| 4 | Set at 0 to 0.4 MPa | T | Tamper Resistant Kit | Note1,2) |
| 15 | Set at 0 to 1.5 MPa | XC16 | Copper-free | |
| E | Non-Relieving Type | | | |

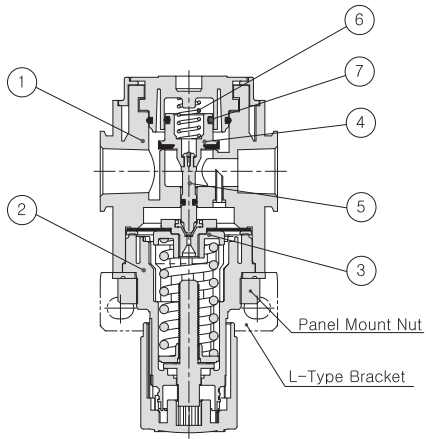
Note1) Refer to page 935 for Built-in Check Valve, Tamper Resistant Kit.
 *If ordering more than one option, indicate symbols numerically then alphabetically Ex) 2EK
 *Over Max. pressure value can be set.

Pressure Gauge

| Symbol | Description | Pressure Range |
|--------|---|----------------|
| Blank | None | |
| G | Integral Pressure Gauge (W/Limit Indicator) | 1.0MPa |
| P | Pressure Gauge | 1.0MPa |
| P2 | Pressure Gauge | 0.2MPa |
| P4 | Pressure Gauge | 0.4MPa |

Series PR4

Construction



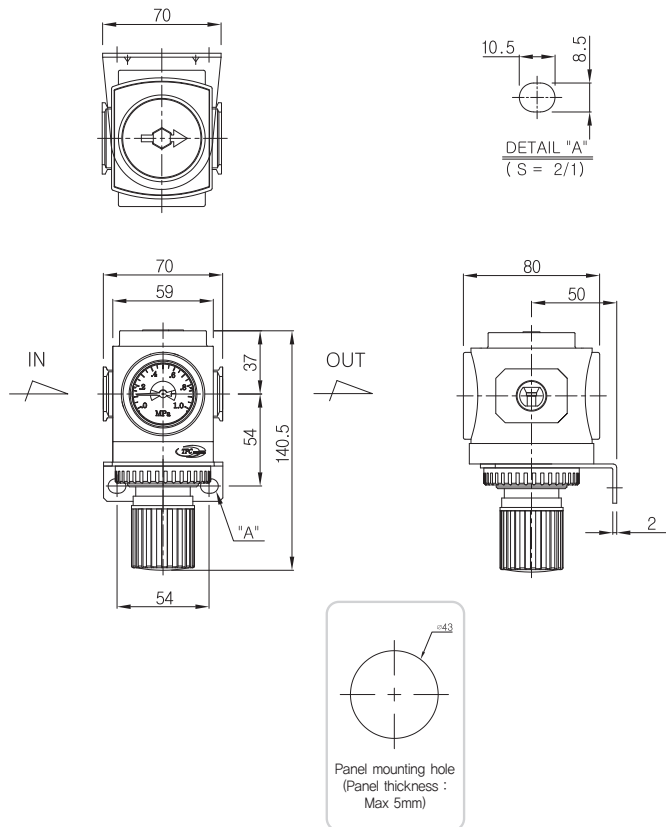
Main Parts/Parts List

| No. | Description | Material | Remark |
|-----|-------------|----------|--------|
| ① | Body | Aluminum | |
| ② | Bonnet | Nylon | |

Replacement Parts/Parts List

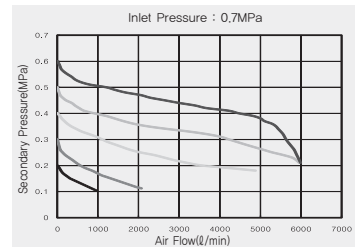
| No. | Description | Material | Part No. |
|-----|-----------------|-----------------|---------------|
| ③ | Diaphragm Ass'y | Nylon+NBR | PR4-11A001-01 |
| ④ | Valve Ass'y | Nylon+NBR | PR4-08A001-01 |
| ⑤ | Valve Stem | Bress | PR4-09-001-01 |
| ⑥ | Valve Spring | Stainless Steel | PR4-14-001-01 |
| ⑦ | Valve O-ring | NBR | P15-01 |

Dimensions

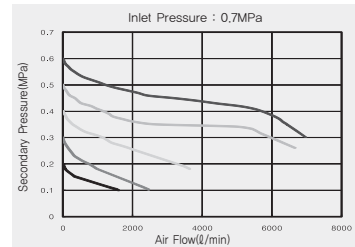


Flow Characteristics

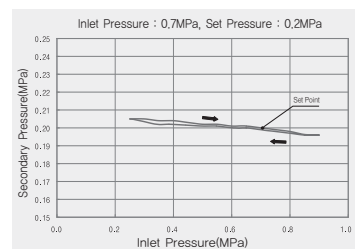
▶ 3/8" PR4



▶ 1/2" PR4



Pressure Characteristics



PC2

PF2

PR2

PL2

PP2

PC3

PF3

PR3

PL3

PP3

PC4

PF4

PR4

PL4

PP4

PC5

PF5

PR5

PL5

PP5

PFH(U)2~
PFH(U)5

PPH(U)3~
PPH(U)4

PLV

PSH

PCV

MB