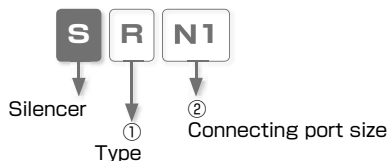


Plastic body Silencer **Silencer Series**

- *Reduce Noise from Exhaust Port.*
 - *Excellent Silencing Effect.*
 - *Selection from 3 types.*
 - *Push-In Fitting Type is Available.*
-
- *Available in Imperial and Metric sizes*

Model Designation (Example)



① Type

| Code | Type | Code | Type | Code | Type | Code | Type |
|----------|-------------------|----------|---------------------|----------|----------------------|----------|--------------------|
| R | Taper Thread Type | U | Unified Thread Type | T | Push-In Fitting Type | M | Metric Thread Type |

② Connecting port size

| | Taper Pipe Thread Type | | | | Unified Thread | Push-In Fitting Type (inch) | | |
|-----------------|------------------------------|--------|--------|--------|--------------------|-----------------------------|-------|--------|
| Code | N1 | N2 | N3 | N4 | 10 | 5/32 | 1/4 | 5/16 |
| Size | 1/8NPT | 1/4NPT | 3/8NPT | 1/2NPT | 10-32UNF | ø5/32" | ø1/4" | ø5/16" |
| Applicable type | NPT (Taper Pipe Thread Type) | | | | U (Unified Thread) | T (Push-In Fitting Type) | | |

| | Taper Pipe Thread Type (※) | | | | Metric Thread Type (mm) | | | Push-In Fitting Type (mm) | | |
|--------------------------|----------------------------|-----------|-----------|-----------|-------------------------|----------|-----------|---------------------------|----------|----------|
| Code | 01 | 02 | 03 | 04 | 5 | 6 | 10 | 4 | 6 | 8 |
| Size | G1/8 | G1/4 | G3/8 | G1/2 | M5 × 0.8 | M6 × 1 | M10 × 1 | ø4 | ø6 | ø8 |
| Installation thread size | Rc1/8 | Rc1/4 | Rc3/8 | Rc1/2 | — | | | — | | |
| Applicable type | R (Taper Pipe Thread Type) | | | | M (Metric Thread Type) | | | T (Push-In Fitting Type) | | |

※ : Resin G thread is connectable to Rc female thread.

Specifications

| | |
|--------------------------|------------------------------------|
| Fluid medium | Air |
| Operating pressure range | 130psi (0.9MPa) |
| Operating temp. range | 32 ~ 140°F (0~ 60°C) (no freezing) |

Standard Size List

Connection with Thread

| Type | NPT male thread | | | | Parallel male thread | | | |
|-----------------------------|-----------------|--------|--------|--------|----------------------|------|------|------|
| | 1/8NPT | 1/4NPT | 3/8NPT | 1/2NPT | G1/8 | G1/4 | G3/8 | G1/2 |
| SR Taper Thread Type | ● | ● | ● | ● | ● | ● | ● | ● |

| Type | Unified male thread | | Type | Metric male thread (mm) | | |
|-------------------------------|---------------------|-----------|------------------------------|-------------------------|--------|---------|
| | 10-32 UNF | 10-32 UNF | | M5 × 0.8 | M6 × 1 | M10 × 1 |
| SU Unified Thread Type | ● | ● | SM Metric Thread Type | ● | ● | ● |

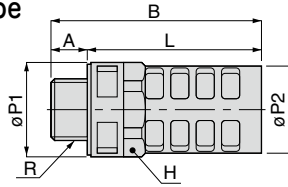
Connection with Tube

| Type | Tube O.D. (inch) | | | Tube O.D. (mm) | | |
|--------------------------------|------------------|-----|------|----------------|---|---|
| | 5/32 | 1/4 | 5/16 | 4 | 6 | 8 |
| ST Push-In Fitting Type | ● | ● | ● | ● | ● | ● |

Imperial size

SR Taper Thread Type

RoHS compliant

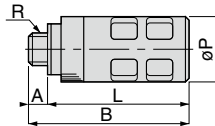


Unit : mm

| Model code | R | A | B | L | φP1 | φP2 | Hex. H | Silencing Effect (dB) | Effective area (mm ²) | Weight (g) |
|------------|-----------|----|------|------|------|-----|--------|-----------------------|-----------------------------------|------------|
| SRN1 | 1/8-27NPT | 8 | 30.2 | 22.2 | 15.5 | 15 | — | 25 | 12 | 2.4 |
| SRN2 | 1/4-18NPT | 11 | 41.2 | 30.2 | 17.5 | 17 | — | 30 | 18 | 4.3 |
| SRN3 | 3/8-18NPT | 12 | 60 | 48 | 26 | 24 | 24 | 20 | 62 | 12 |
| SRN4 | 1/2-14NPT | 15 | 69 | 54 | 29 | 26 | 27 | 25 | 78 | 15 |

SM Metric Thread Type

RoHS compliant

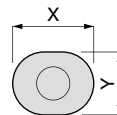
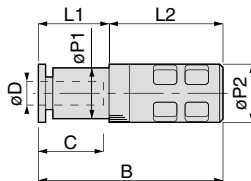


Unit : mm

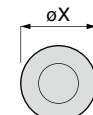
| Model code | R | A | B | L | φP | Silencing Effect (dB) | Effective area (mm ²) | Weight (g) |
|------------|-----------|---|------|------|----|-----------------------|-----------------------------------|------------|
| SU10 | 10-32 UNF | 3 | 24.5 | 21.5 | 10 | 20 | 3.8 | 3.4 |

ST Push-In Fitting Type

RoHS compliant



Release ring
Mini type
φD : 4~6



Release ring
Standard type

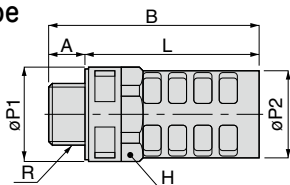
Unit : mm

| Model code | Tube O.D. φD | B | L1 | L2 | Tube end C | φP1 | φP2 | Silencing Effect (dB) | Effective area (mm ²) | X (φX) | Y | Weight (g) |
|------------|--------------|------|------|------|------------|------|------|-----------------------|-----------------------------------|--------|-----|------------|
| ST5/32 | 5/32" | 31.6 | 12.1 | 19.5 | 10.9 | 8.5 | 10 | 20 | 3.5 | 9.8 | 7.8 | 5.3 |
| ST1/4 | 1/4" | 34.8 | 12.6 | 22.2 | 11.8 | 11 | 15.5 | 20 | 10.5 | 11.8 | 9.8 | 3.7 |
| ST5/16 | 5/16" | 48.9 | 18.7 | 30.2 | 18.1 | 14.5 | 17.5 | 20 | 17.0 | 13.8 | — | 8 |

Metric size

SR Taper Thread Type

RoHS compliant

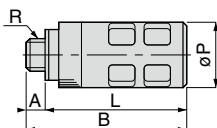


Unit : mm

| Model code | R | A | B | L | $\phi P1$ | $\phi P2$ | Hex. H | Silencing Effect (dB) | Effective area (mm ²) | Weight (g) | CAD file name |
|------------|------|----|------|------|-----------|-----------|--------|-----------------------|-----------------------------------|------------|---------------|
| SR01 | G1/8 | 6 | 28.2 | 22.2 | 15.5 | 15 | — | 25 | 12 | 2.3 | SR01 |
| SR02 | G1/4 | 8 | 38.2 | 30.2 | 17.5 | 17 | — | 30 | 18 | 3.9 | SR02 |
| SR03 | G3/8 | 10 | 58 | 48 | 26 | 24 | 24 | 20 | 62 | 12 | SR03 |
| SR04 | G1/2 | 12 | 66 | 54 | 29 | 26 | 27 | 25 | 78 | 16 | SR04 |

SM Metric Thread Type

RoHS compliant

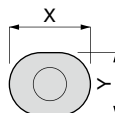
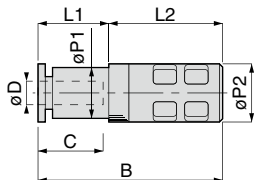


Unit : mm

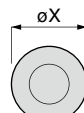
| Model code | R | A | B | L | ϕP | Silencing Effect (dB) | Effective area (mm ²) | Weight (g) | CAD file name |
|------------|----------|-----|------|------|----------|-----------------------|-----------------------------------|------------|---------------|
| SM5 | M5 × 0.8 | 3 | 24.5 | 21.5 | 10 | 20 | 3.8 | 3.4 | SM5 |
| SM6 | M6 × 1 | 4 | 25.5 | 21.5 | 10 | 20 | 4.3 | 3.7 | SM6 |
| SM10 | M10 × 1 | 3.2 | 20.7 | 17.5 | 16 | 25 | 8.0 | 6.6 | SM10 |

ST Push-In Fitting Type

RoHS compliant



Release ring
Mini type
 $\phi D : 4 \sim 6$

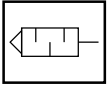


Release ring
Standard type

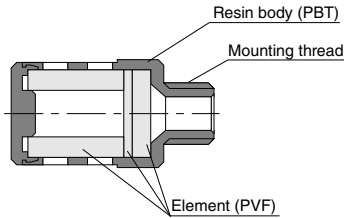
Unit : mm

| Model code | Tube O.D. ϕD | B | L1 | L2 | Tube end C | $\phi P1$ | $\phi P2$ | Silencing Effect (dB) | Effective area (mm ²) | X (ϕX) | Y | Weight (g) | CAD file name |
|------------|--------------------|------|------|------|------------|-----------|-----------|-----------------------|-----------------------------------|----------------|-----|------------|---------------|
| ST4 | 4 | 31.6 | 12.1 | 19.5 | 10.9 | 8.5 | 10 | 20 | 3.5 | 9.8 | 7.8 | 5.3 | ST4 |
| ST6 | 6 | 34.6 | 12.4 | 22.2 | 11.6 | 11 | 15.5 | 20 | 10.5 | 11.8 | 9.8 | 3.7 | ST6 |
| ST8 | 8 | 48.9 | 18.7 | 30.2 | 18.1 | 14.5 | 17.5 | 20 | 17.0 | 13.8 | — | 8 | ST8 |

Construction (Taper Thread Type: SR)



Symbol



△ Detailed Safety Instructions

Before using PISCO products, be sure to read "Safety Instructions" and "Safety Instruction Manual" and "Common Safety Instructions for Controllers".

Caution

1. The clogging of silencer element increases exhaust-resistance. It can cause a decline in all system performance or damage to silencer.
2. Make sure to follow "2. Instructions for Installing Controllers" in "Common Safety Instructions for Controllers" when tightening thread. Resin thread and a knurling knob should be tightened by hand, so improper tightening may cause a loosened thread or damage to Silencer.
3. In case of function problem due to the clogging of element, replace Silencer to a new one. The element of Silencer is not replaceable.

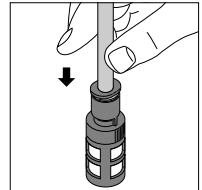
How to insert and disconnect

1. How to insert and disconnect tubes

① Tube insertion

Insert a tube into Push-In Fitting up to the tube end. Lock-claws bite the tube and fix it automatically, then the elastic sleeve seals around the tube.

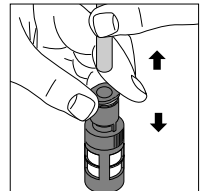
Refer to "2. Instructions for Tube Insertion" under "Common Safety Instructions for Fittings" .



② Tube disconnection

The tube is disconnected by pushing release-ring to release Lock-claws.

Make sure to stop air supply before the tube disconnection.



2. How to tighten thread

① Tightening thread

Use a spanner to tighten a hexagonal-column. Tighten a knurling knob by hand.

Refer to "Table: Recommended tightening torque" under "2. Instructions for Installing Controllers" in "Common Safety Instructions for Controllers".

