

STS fittings (SS) Series

Stainless Steel Fitting



Features

- Easy tube attachment and detachment with one-touch fitting
- Rc threaded connection complies with ISO (BSPT) standards
- Made of STS304 material for enhanced corrosion resistance
- Suitable for applications where copper is not permitted

HOW TO ORDER (PART NUMBER TREE)

SS - P 01 - 01

Stainless Steel — 1 2 3

1 SERIES NAME

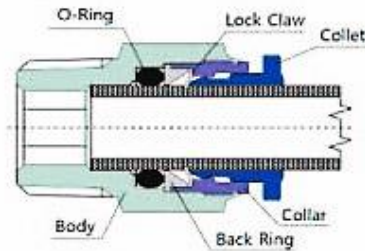
2 TUBE SIZE

04 : ø4
06 : ø6
08 : ø8
10 : ø10
12 : ø12
16 : ø16

3 THREAD SIZE TUBE O.D.

M5 : M5X0.8
01 : R(c)1/8
02 : R(c)1/4
03 : R(c)3/8
04 : R(c)1/2

DIAGRAM



SPECIFICATIONS

Working Fluid	Compressed air, water (For other fluids, please inquire separately)
Working Pressure	0 - 1.5 MPa
Maximum Pressure	3.0 MPa
Operating Temperature	-35°C to 150°C
Applicable Tube Materials	PU (Polyurethane), PA (Nylon), PE (Polyethylene)

PRECAUTIONS BY PRODUCT

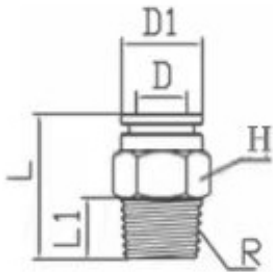
Please ensure you read and understand this before use, and refer to the safety precautions and general instructions.

STS fittings (SS) Series

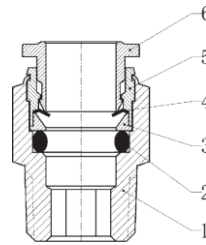
SS-PC



DIMENSIONS



DIAGRAM



No.	PART	MATERIAL
1	Body	STS 316
2	O-Ring	NBR
3	Back Ring	PPS
4	Lock Claw	STS 301
5	Collar	STS 304
6	Collet	STS 304

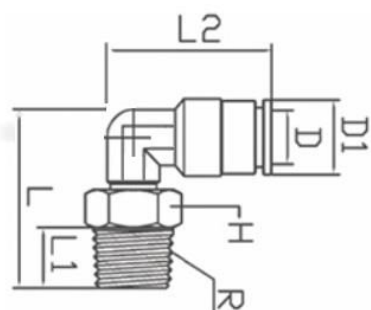
Unit: (mm)

MODEL	ØD	R	L1	D1	L	H
SS-PC04-M5	Ø4	M5	5	9.5	22	10
SS-PC04-01		PT1/8	6.5	9.5	21.5	10
SS-PC04-02		PT1/4	10	9.5	23.5	14
SS-PC06-M5	Ø6	M5	5.5	12	25	12
SS-PC06-01		PT1/8	7	12	22.5	12
SS-PC06-02		PT1/4	9	12	24	14
SS-PC06-03		PT3/8	10	12	26	17
SS-PC08-01	Ø8	PT1/8	7.5	14	23	14
SS-PC08-02		PT1/4	9	14	24.5	14
SS-PC08-03		PT3/8	10	14	25	17
SS-PC08-04		PT1/2	11	14	28.5	22
SS-PC10-01	Ø10	PT1/8	7.8	16.5	28	17
SS-PC10-02		PT1/4	10	16	29	17
SS-PC10-03		PT3/8	10	15	26	17
SS-PC10-04		PT1/2	12	16.5	30	22
SS-PC12-02	Ø12	PT1/4	10	19	31	19
SS-PC12-03		PT3/8	10	19	30	19
SS-PC12-04		PT1/2	10	19	25.5	22

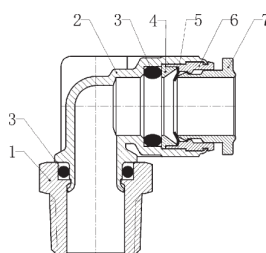
SS-PL



DIMENSIONS



DIAGRAM



No.	PART	MATERIAL
1	Thread	STS304
2	Body	STS316
3	O-Ring	NBR
4	Back Ring	PPS
5	Lock Claw	STS301
6	Collar	STS304
7	Collet	STS304

Unit: (mm)

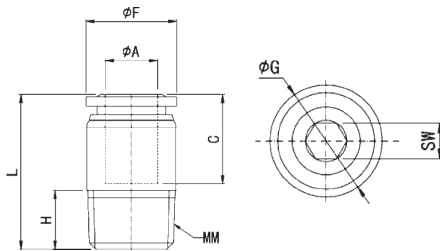
MODEL	ØD	R	L1	D1	L	H	L2
SS-PL04-M5	Ø4	M5	5.5	9.5	28.5	12	24
SS-PL04-01		PT1/8	7.5	9.5	28.5	12	24.5
SS-PL04-02		PT1/4	9	9.5	27	14	24
SS-PL06-M5	Ø6	M5	5.5	12	31	12	28
SS-PL06-01		PT1/8	7	12	31	12	28
SS-PL06-02		PT1/4	8	12	32	14	28
SS-PL06-03		PT3/8	9.5	12	29	17	28
SS-PL08-01	Ø8	PT1/8	8	13.5	33	14	30
SS-PL08-02		PT1/4	8.5	13.5	33	14	30
SS-PL08-03		PT3/8	10	13.5	30	17	30
SS-PL08-04		PT1/2	10	13.5	33	22	30
SS-PL10-01	Ø10	PT1/8	8	15.5	36	17	33
SS-PL10-02		PT1/4	11	15.5	38	17	33
SS-PL10-03		PT3/8	9.5	15.5	35.5	17	33
SS-PL10-04		PT1/2	9.5	15.5	37	22	33
SS-PL12-02	Ø12	PT1/4	10	18.5	38	17	34.5
SS-PL12-03		PT3/8	10	18.5	36.5	17	34.5
SS-PL12-04		PT1/2	11	18.5	36.5	22	34.5

STS fittings (SS) Series

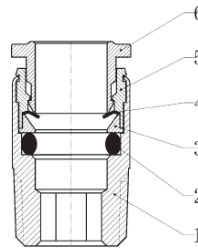
SS-POC



DIMENSIONS



DIAGRAM



No.	PART	MATERIAL
1	Body	STS304
2	O-Ring	NBR
3	Back Ring	PPS
4	Lock Claw	STS301
5	Collar	STS304
6	Collet	STS304

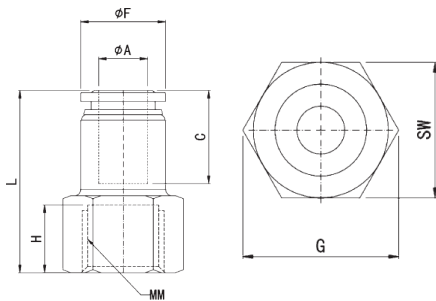
Unit: (mm)

MODEL	ØA	MM	C	ØF	L	ØG	H	SW
SS-POC04-M5	Ø4	M5	14	Ø8.8	20.2	Ø8.8	3.6	2
SS-POC04-01		PT1/8	14	Ø8.8	19.5	Ø9.8	8	2.5
SS-POC06-M5	Ø6	M5	16.5	Ø11.3	21.8	Ø11.8	3.6	2
SS-POC06-01		PT1/8	16.5	Ø11.3	22	Ø11.8	8	4
SS-POC06-02		PT1/4	16.5	Ø11.3	19.7	Ø13.5	9	4
SS-POC08-01	Ø8	PT1/8	17	Ø13.8	26.5	Ø13.8	8	5
SS-POC08-02		PT1/4	17	Ø13.8	23.3	Ø13.8	9	6
SS-POC08-03		PT3/8	17	Ø13.8	20.5	Ø16.8	10.5	6
SS-POC10-01	Ø10	PT1/8	19	Ø16.5	29.3	Ø16.8	8	5
SS-POC10-02		PT1/4	19	Ø16.5	29.9	Ø16.8	9	6
SS-POC10-03		PT3/8	19	Ø16.5	27.4	Ø16.8	10.5	8
SS-POC10-04		PT1/2	19	Ø16.5	23.8	Ø20.8	12	8
SS-POC12-02	Ø12	PT1/4	20	Ø18.7	31.1	Ø19.7	9	6
SS-POC12-03		PT3/8	20	Ø18.7	30.8	Ø19.7	10.5	8
SS-POC12-04		PT1/2	20	Ø18.7	29.3	Ø20.8	12	8
SS-POC16-03	Ø16	PT3/8	22.5	Ø23.8	36	Ø24	10.5	10
SS-POC16-04		PT1/2	22.5	Ø23.8	36.5	Ø24	12	12

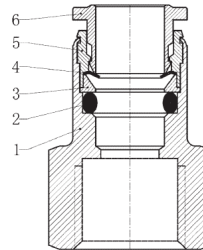
SS-PCF



DIMENSIONS



DIAGRAM



No.	PART	MATERIAL
1	Body	STS304
2	O-Ring	NBR
3	Back Ring	PPS
4	Lock Claw	STS301
5	Collar	STS304
6	Collet	STS304

Unit: (mm)

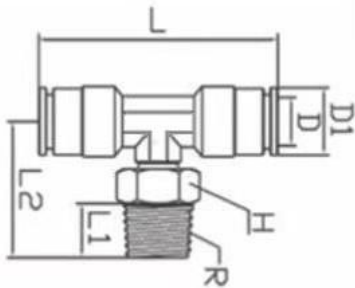
MODEL	ØA	MM	C	ØF	L	G	H	SW
SS-PCF04-01	Ø4	PT1/8	14	Ø8.8	25	13.5	9	12
SS-PCF04-02		PT1/4	14	Ø8.8	26.6	18.8	11	17
SS-PCF06-01	Ø6	PT1/8	16.5	Ø11.3	25.7	13.5	9	12
SS-PCF06-02		PT1/4	16.5	Ø11.3	27.8	18.8	11	17
SS-PCF06-03		PT3/8	16.5	Ø11.3	31	21.4	11.5	19
SS-PCF08-01	Ø8	PT1/8	17	Ø13.8	27.1	15.5	9	14
SS-PCF08-02		PT1/4	17	Ø13.8	29.1	18.8	11	17
SS-PCF08-03		PT3/8	17	Ø13.8	29.6	21.4	11.5	19
SS-PCF10-02	Ø10	PT1/4	19	Ø16.5	31.8	18.8	11	17
SS-PCF10-03		PT3/8	19	Ø16.5	32.3	21.4	11.5	19
SS-PCF12-02	Ø12	PT1/4	20	Ø18.7	32.1	23.5	11	21
SS-PCF12-03		PT3/8	20	Ø18.7	32.6	23.5	11.5	21
SS-PCF12-04		PT1/2	20	Ø18.7	34.1	26.9	12.5	24
SS-PCF16-03	Ø16	PT3/8	22.5	Ø23.8	36.1	26.9	11.5	24
SS-PCF16-04		PT1/2	22.5	Ø23.8	37.1	26.9	12.5	24

STS fittings (SS) Series

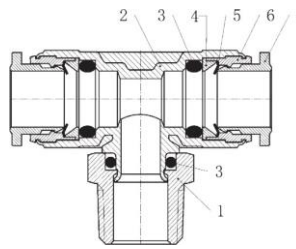
SS-PB



DIMENSIONS



DIAGRAM



No.	PART	MATERIAL
1	Thread	STS304
2	Body	STS316
3	O-Ring	NBR
4	Back Ring	PPS
5	Lock Claw	STS301
6	Collar	STS304
7	Collet	STS304

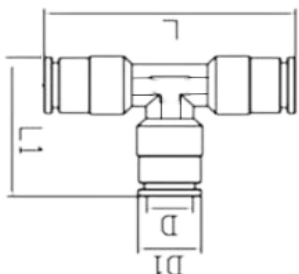
Unit: (mm)

MODEL	D	D1	L	H	L1	L2	R
SS-PB04-M5	Ø4	9.5	34.5	12	4.5	21	M5
SS-PB04-01		9.5	34.5	12	7.5	22	PT1/8
SS-PB04-02		9.5	34.5	14	10	25	PT1/4
SS-PB06-M5	Ø6	12	43.5	12	5.2	24	M5
SS-PB06-01		12	44.5	12	7.5	24	PT1/8
SS-PB06-02		12	44.5	14	9	26	PT1/4
SS-PB06-03		12	44.5	17	9.5	27.5	PT3/8
SS-PB08-01	Ø8	14	48.5	14	8	27.5	PT1/8
SS-PB08-02		14	48.5	14	9.5	26.5	PT1/4
SS-PB08-03		14	48.5	17	9	28.5	PT3/8
SS-PB10-01	Ø10	16	53	17	8.5	30	PT1/8
SS-PB10-02		16	53	17	9	29	PT1/4
SS-PB10-03		16	53	17	9	30	PT3/8
SS-PB10-04		16	53	22	11	31.5	PT1/2
SS-PB12-02	Ø12	19	60.5	19	10	33.5	PT1/4
SS-PB12-03		19	61	19	9	33	PT3/8
SS-PB12-04		19	61	22	12	33.5	PT1/2

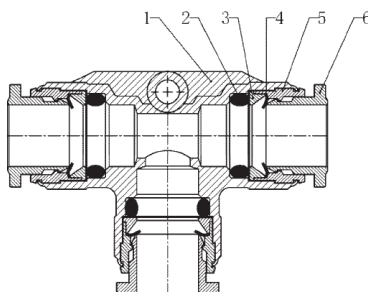
SS-PE, PEG



DIMENSIONS



DIAGRAM

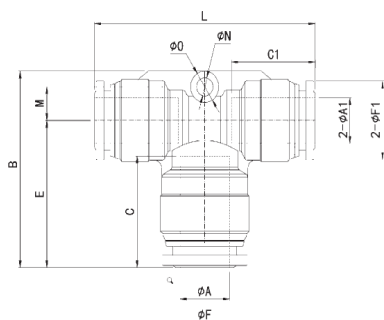


No.	PART	MATERIAL
1	Body	STS316
2	O-Ring	NBR
3	Back Ring	PPS
4	Lock Claw	STS301
5	Collar	STS304
6	Collet	STS304

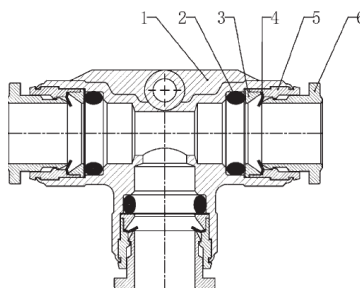
Unit: (mm)

MODEL	D	D1	L	L1
SS-PE04-00	Ø4	Ø9.5	37	23
SS-PE06-00	Ø6	Ø11.5	44	28
SS-PE08-00	Ø8	Ø13.5	48	31
SS-PE10-00	Ø10	Ø15.5	54	35
SS-PE12-00	Ø12	Ø18.5	61	41

DIMENSIONS



DIAGRAM



No.	PART	MATERIAL
1	Body	STS316
2	O-Ring	NBR
3	Back Ring	PPS
4	Lock Claw	STS301
5	Collar	STS304
6	Collet	STS304

Unit: (mm)

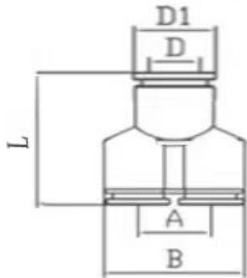
MODEL	ØA	ØF	C	2-ØA1	2-ØF1	C1	E	L	B	M	ØO	ØN
SS-PEG06-04	Ø6	Ø11.8	16.5	Ø4	Ø8.8	14	19.5	38.6	26.2	4.45	Ø4.5	Ø2.5
SS-PEG08-06	Ø8	Ø13.8	17	Ø6	Ø11.8	16.5	22.5	46	29.5	-	-	-
SS-PEG10-08	Ø10	Ø16.5	19	Ø8	Ø13.8	17	26.2	53.2	38.5	8.4	Ø7	Ø4.2
SS-PEG12-10	Ø12	Ø18.7	20	Ø10	Ø16.5	19	26.2	53.2	38.5	8.4	Ø7	Ø4.2
SS-PEG16-12	Ø16	Ø23.8	22.5	Ø12	Ø18.7	20	32.5	61	46.5	11	Ø8	Ø4.2

STS fittings (SS) Series

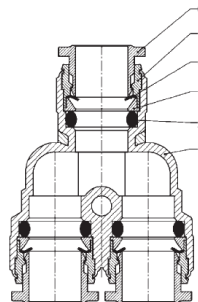
SS-PY, PW



DIMENSIONS



DIAGRAM

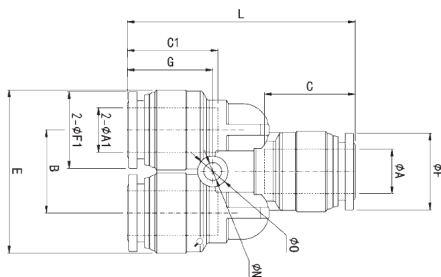


No.	PART	MATERIAL
1	Body	STS316
2	O-Ring	NBR
3	Back Ring	PPS
4	Lock Claw	STS301
5	Collar	STS304
6	Collet	STS304

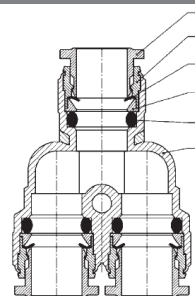
Unit: (mm)

MODEL	D	D1	L	A	B
SS-PE04-00	Ø4	Ø9.5	34.5	10	20.5
SS-PE06-00	Ø6	Ø12	35	13	24
SS-PE08-00	Ø8	Ø13.5	38	15	30
SS-PE10-00	Ø10	Ø16.5	43	18	34
SS-PE12-00	Ø12	Ø18.5	53	22	40

DIMENSIONS



DIAGRAM



No.	PART	MATERIAL
1	Body	STS316
2	O-Ring	NBR
3	Back Ring	PPS
4	Lock Claw	STS301
5	Collar	STS304
6	Collet	STS304

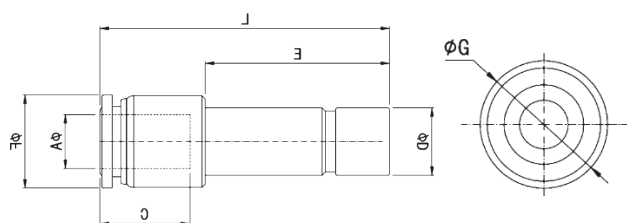
Unit: (mm)

MODEL	ØA	ØF	C	L	E	2-ØA1	2-ØF1	C1	G	B	ØØ	ØN
SS-PW06-04	Ø6	Ø11.8	16.5	41	29.3	Ø4	Ø8.8	14	15.5	14.9	Ø5.5	Ø3.2
SS-PW08-06	Ø8	Ø13.8	17	40.5	29.3	Ø6	Ø11.8	16.5	15.7	14.9	Ø5.5	Ø3.2
SS-PW10-08	Ø10	Ø16.5	19	48.6	41.1	Ø8	Ø13.8	17	18.6	21	Ø7	Ø4.2
SS-PW12-10	Ø12	Ø18.7	20	48.6	41.1	Ø10	Ø16.5	19	18.6	21	Ø7	Ø4.2
SS-PW16-12	Ø16	Ø23.8	22.5	57	51	Ø12	Ø18.7	20	20	26	Ø8	Ø4.2

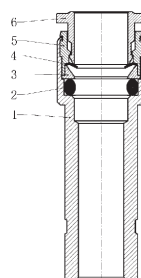
SS-PGJ, PG



DIMENSIONS



DIAGRAM

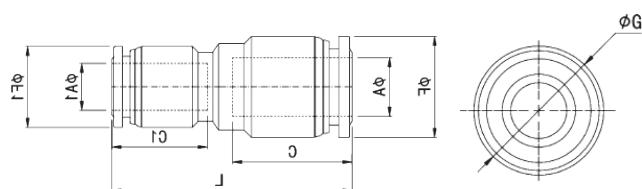


No.	PART	MATERIAL
1	Body	STS304
2	O-Ring	NBR
3	Back Ring	PPS
4	Lock Claw	STS301
5	Collar	STS304
6	Collet	STS304

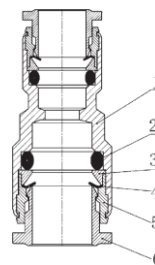
Unit: (mm)

Model	ØA	ØF	C	L	E	ØG	ØD
SS-PGJ04-06	Ø4	Ø8.8	14	35.8	22	Ø9	Ø6
SS-PGJ06-08	Ø6	Ø11.8	16.5	39	25	Ø11.8	Ø8
SS-PGJ08-10	Ø8	Ø13.8	17	42	24	Ø13.8	Ø10
SS-PGJ10-12	Ø10	Ø16.5	19	47.8	27	Ø16.8	Ø12
SS-PGJ12-16	Ø12	Ø18.7	20	48.8	30	Ø19.7	Ø16

DIMENSIONS



DIAGRAM



No.	PART	MATERIAL
1	Body	STS304
2	O-Ring	NBR
3	Back Ring	PPS
4	Lock Claw	STS301
5	Collar	STS304
6	Collet	STS304

Unit: (mm)

Model	ØA	ØF	C	L	ØA1	ØF1	C1	ØG
SS-PG04-06	Ø6	Ø11.8	16.5	31.5	Ø4	Ø8.8	14	Ø11.8
SS-PG06-08	Ø8	Ø13.8	17	34	Ø6	Ø11.8	16.5	Ø13.8
SS-PG08-10	Ø10	Ø16.5	19	37	Ø8	Ø13.8	17	Ø16.8
SS-PG10-12	Ø12	Ø18.7	20	41	Ø10	Ø16.5	19	Ø20
SS-PG12-16	Ø16	Ø23.8	22.5	45	Ø12	Ø18.7	20	Ø24

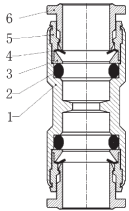
STS fittings (SS) Series

SS-PU, PV, PM

SS-PU

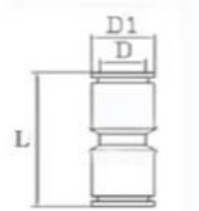


DIAGRAM



No.	PART	MATERIAL
1	Body	STS304
2	O-Ring	NBR
3	Back Ring	PPS
4	Lock Claw	STS301
5	Collar	STS304
6	Collet	STS304

DIMENSIONS



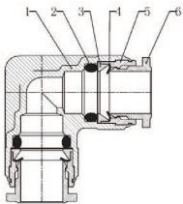
Unit: (mm)

	D	D1	L
SS-PU04-00	Ø4	Ø10	32
SS-PU06-00	Ø6	Ø12	32
SS-PU08-00	Ø8	Ø13.5	36
SS-PU10-00	Ø10	Ø15.5	35
SS-PU12-00	Ø12	Ø18.5	35

SS-PV

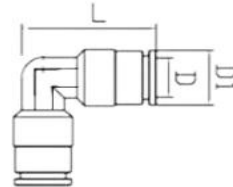


DIAGRAM



No.	PART	MATERIAL
1	Body	STS316
2	O-Ring	NBR
3	Back Ring	PPS
4	Lock Claw	STS301
5	Collar	STS304
6	Collet	STS304

DIMENSIONS



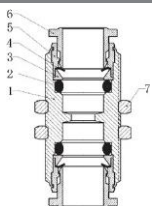
Unit: (mm)

	D	D1	L
SS-PV04-00	Ø4	Ø10	20
SS-PV06-00	Ø6	Ø12	27.5
SS-PV08-00	Ø8	Ø13.5	29.5
SS-PV10-00	Ø10	Ø17.5	33
SS-PV12-00	Ø12	Ø18.5	34

SS-PM

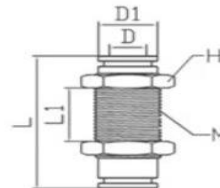


DIAGRAM



No.	PART	MATERIAL
1	Body	STS304
2	O-Ring	NBR
3	Back Ring	PPS
4	Lock Claw	STS301
5	Collar	STS304
6	Collet	STS304
7	NUT	STS304

DIMENSIONS



Unit: (mm)

	D	D1	H	L	L1	M
SS-PM04-00	Ø4	Ø9.4	15	33	15	12
SS-PM06-00	Ø6	Ø12	17	34	15	14
SS-PM08-00	Ø8	Ø14	19	34	15	16
SS-PM10-00	Ø10	Ø15.5	22	34.5	15	18
SS-PM12-00	Ø12	Ø18.5	24	35	16	20