

2WAY SOLENOID VALVE FOR STEAM (Normally Closed type, Pilot Kick Control)

HPS 2120 / 2130

HPS 2140 / 2150 / 2160

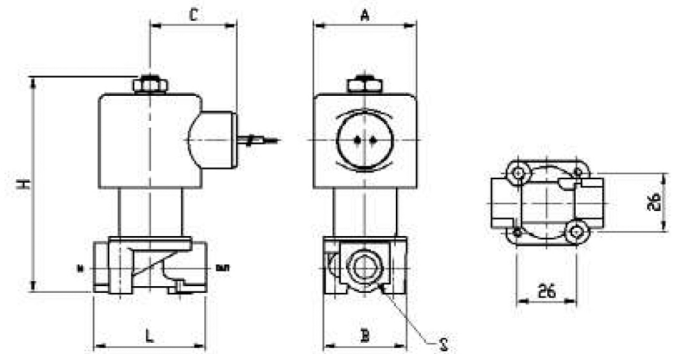
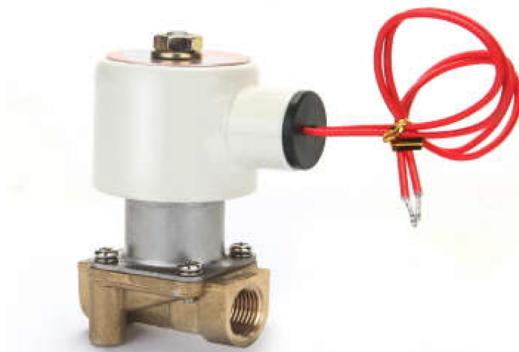
FEATURES

- The valve will be operated by a pilot-piston.
- The valve for steam is workable at the maximum pressure of 0.7MPa and up to 180°C

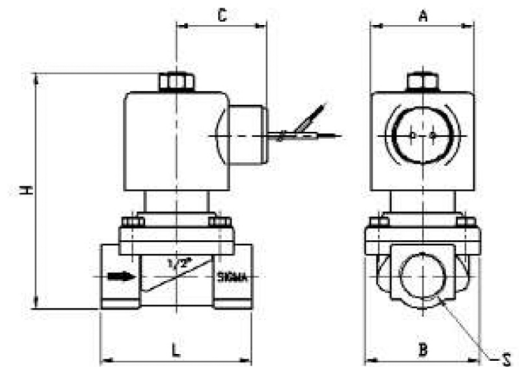
APPLICATIONS

- Steam piping, Washing machine, Steam cooker,
Sterilizers, Food & beverage lines, Steam presses, Dyeing machines, etc.

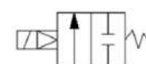
HPS 2120 / 2130



HPS 2140 / 2150 / 2160



SYMBOL



DIMENSION

MODEL	L	H	A	B	C	CONNECTION	WEIGHT
HPS 2120 (8A)	50	97	45	38	40	Rc 1/4"	495g
HPS 2130 (10A)	50	97	45	38	40	Rc 3/8"	480g
HPS 2140 (15A)	66	100	45	50	40	Rc 1/2"	723g
HPS 2150 (20A)	85	123	45	63	40	Rc 3/4"	1,270g
HPS 2160 (25A)	93	132	45	73	40	Rc 1"	1,540g

STANDARD SPECIFICATION

WORKING FLUID	STEAM	THE LENGTH OF LEAD WIRE	260mm
OPERATING PRESSURE	0.05 ~ 0.7 MPa	FLUID TEMPERATURE	0 ~ 180℃
VOLTAGE	AC 220V, AC 110V DC 24V, DC 12V	BODY MATERIAL	BRASS
POWER CONSUMPTION	AC 220V : 19VA DC 24V : 14W	SEAT MATERIAL	TEFLON
COIL INSULATION	CLASS H	OPTION	SEAT : EPDM, CR, FKM CONNECTION : PF, NPT COIL : DIN Connector type

* Specification of the products are subject to change without prior notice for quality improvement.

HPS 2170 / 2180 / 2190

HPS 2150F / 2160F / 2170F / 2180F / 2190F

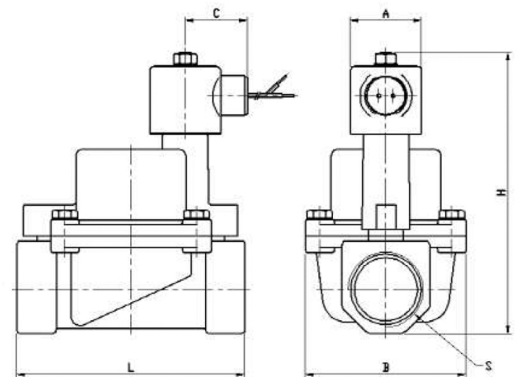
FEATURES

- The valve will be operated by the Pilot - piston.
- The valve for steam is workable at the maximum pressure of 0.7MPa and up to 180°C.

APPLICATIONS

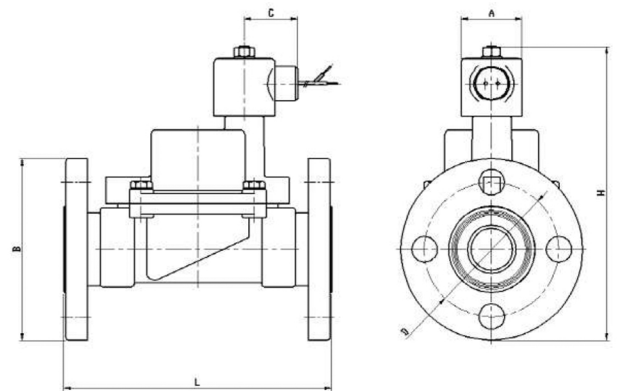
- Steam piping, Washing machine, Steam cookjer, Sterilizers, Food & beverage lines, Steam presses, Dyeing machines, etc.

HPS 2170 / 2180 / 2190

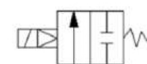


HPS 2150F / 2160F / 2170F / 2180F / 2190F

* ROTARY FLANGE PATENTED PRODUCT



SYMBOL



DIMENSION

MODEL	L	H	A	B	C	D	CONNECTION	WEIGHT
HPS 2170 (32A)	120	171	45	88	40	-	Rc 1"1/4	3,297g
HPS 2180 (40A)	120	171	45	88	40	-	Rc 1"1/2	3,165g
HPS 2190 (50A)	140	199	45	100	40	-	Rc 2"	4,895g
HPS 2150F (20A)	134	137	45	100	40	75	KS 10K RF 20A	2,970g
HPS 2160F (25A)	147	153.5	45	125	40	90	KS 10K RF 25A	4,240g
HPS 2170F (32A)	175	204	45	135	40	100	KS 10K RF 32A	6,730g
HPS 2180F (40A)	175	209	45	140	40	105	KS 10K RF 40A	6,850g
HPS 2190F (50A)	195	248	45	155	40	120	KS 10K RF 50A	9,520g

STANDARD SPECIFICATION

WORKING FLUID	STEAM	THE LENGTH OF LEAD WIRE	260mm
OPERATING PRESSURE	0.05~ 0.7 MPa	FLUID TEMPERATURE	0 ~ 60℃
VOLTAGE	AC220V, AC110V DC24V, DC12V	BODY MATERIAL	BRASS
POWER CONSUMPTION	AC220V : 19VA DC24V : 14W	SEAT MATERIAL	NBR
COIL INSULATION	CLASS H	OPTION	SEAT : EPDM, CR, FKM CONNECTION : PF, NPT COIL : DIN Connector type

* Specification of the products are subject to change without prior notice for quality improvement.

