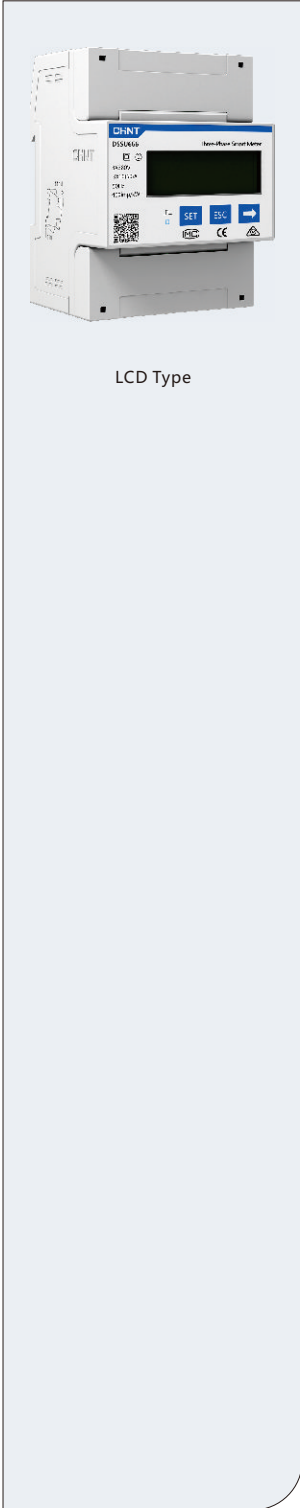


# DTSU666 Three Phase DIN-Rail Meter



LCD Type

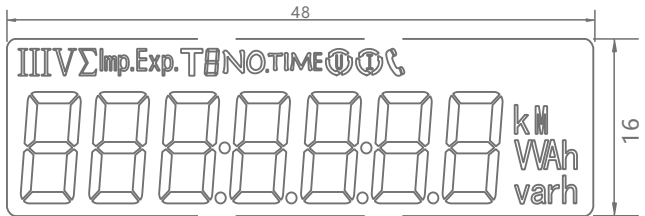
## Function

- LCD Display
- Bi-Direction Measurement
- DIN-Rail Installation

## Features

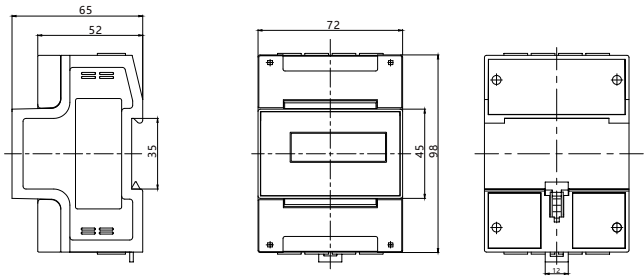
 HIGH ACCURACY	 LOW CONSUMPTION	 BI-DIRECTION MEASUREMENT	 LARGE LCD DISPLAY
-------------------	---------------------	------------------------------	-----------------------

## LCD Indication



Units: mm

## Meter Dimensions



Units: mm

## Specifications

### Measurement

- Compliance with IEC62052-11 IEC62053-21
- Connection type: 3P4W
- Accuracy: Class 1.0 for active

### Voltage

- Nominal voltage (Un): 3×220/380V , 3×230/400V  
3×240/415V
- Operating range: 0.7Un ~ 1.2Un
- Power consumption: ≤1W, 5VA

### Current

- CT: 1.5(6)A
- DC: 5(80)A

### Frequency

- 50Hz or 60Hz

### LCD Display

- 7 characters of 7 segment display
- Digital size: 5.3mm × 2.8mm

### LED Display

- Number of flashes per kWh

### Measured Values

- Total kWh
- Total kvarh
- Instantaneous kW, kvar
- Instantaneous Irms, Vrms, frequency, power factor

### Communications

- RS485
- Protocol: Modbus and DL/T 645-2007

### Environmental

- Operating range limit: -40°C to +75°C
- Storage range limit: -40°C to +85°C
- Relative humidity: ≤ 95%RH
- Ingress protection: IP51

### Dimensions and Weight

- Dimensions: 98mm × 65mm × 72mm
- Weight: 0.4 kg (Approx.)