

SILENCERS

Application

- Used for suppressing the noise of air release, applied to exhausted port of machine.

Feature

- Excellent noise suppression effect.
- Several options of materials (Brass, Stainless Steel, Plastic, Al)
- High durability and wide applications.
- Compact design is suitable for installing in confined space.



Silencers

Product Code System

SL 01

① ②

① Type

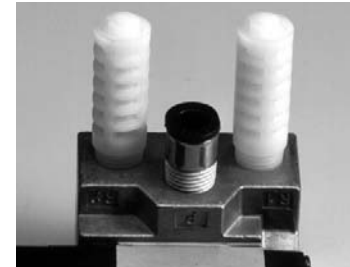
② Thread Size

Thread Size	Metric Thread	Tape Pipe Thread									
Code	M5	01	02	03	04	06	08	10	12	16	
Size	M5	R1/8	R1/4	R3/8	R1/2	R3/4	R1	R1 1/4	R1 1/2	R2	

Thread Size	Tape Paralle Thread						
Code	G01	G02	G03	G04	G06	G08	
Size	G1/8	G1/4	G3/8	G1/2	G3/4	G1	

Case In Use

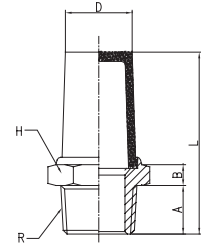
- Applied to exhausted port of machine.
- Sintering Silencer for anti-corrosion & high temperature place and ST Silencer for superior silence & contaminated place.



CAUTION

- Be sure to read the "Common Precautions" and "Using Precautions of Fitting Series"(P6) before using.
- Replace silencer after moderate use.
- Seal with Teflon, failure to do so will cause air leakage.
- Clean regularly to maintain good air release efficiency.
- Fastening the thread by force will cause damage on the body.

SL

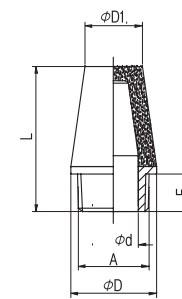


- ▶ **Application** : Hydraulic & Pneumatic equipment, Water Purifier, Automobile parts, Water Ionizer, Water Heater, Tooling, etc.
- ▶ **Material** : Brass
- ▶ **Feature** : Silencer with Brass Sintering which is not burn is strong in heat and high pressure.

MODEL [ØD-T]

Tube (Metric) - Thread(R)							(mm)
MODEL	R	A	B	L	D	H	
SL M5	M5	4	3	20.7	4	9	
SL 01	R 1/8	7	3.5	24.5	8	12	
SL 02	R 1/4	9.5	4	31.5	10	15	
SL 03	R 3/8	10.5	5	39.9	12	19	
SL 04	R 1/2	12	6	47.3	15	22	
SL 06	R 3/4	12	6.5	55.8	19	27	
SL 08	R 1	14.5	7	70.5	32	36	
SL 10	R 1 1/4	15	7.5	75.8	32	46	
SL 12	R 1 1/2	15	8	81.8	38	52	
SL 16	R 2	16.5	9	105.3	50	64	

SCL

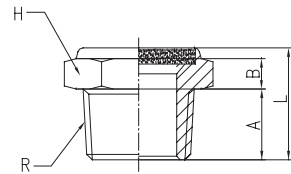


- ▶ **Application** : Hydraulic & Pneumatic equipment, Water Purifier, Automobile parts, Water Ionizer, Water Heater, Tooling, etc.
- ▶ **Material** : Steel, Brass
- ▶ **Feature** : Silencer with Brass Sintering which is not burn is strong in heat and high pressure. Silencer with steel is excellent in anti-corrosion. Superior mechanical strength.

MODEL [ØD-T]

Tube (Metric) - Thread(R)							(mm)
MODEL	A	φD	φD1	φd	F	L	
SCL M5	M5	6.5	5.5	3	5	16	
SCL 01	R 1/8	12	8	6.5	7	22	
SCL 02	R 1/4	15	11	9	9.5	27.5	
SCL 03	R 3/8	19	14	11.5	10.5	38.5	
SCL 04	R 1/2	23	18	15.5	12	45	
SCL 06	R 3/4	30	25	22	12	57	
SCL 08	R 1	37	30	28	14.5	66.5	

SM

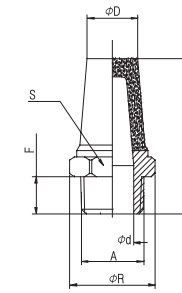


- ▶ **Application** : Hydraulic & Pneumatic equipment, Water Purifier, Automobile parts, Water Ionizer, Water Heater, Tooling, etc.
- ▶ **Material** : Brass
- ▶ **Feature** : Silencer with Brass Sintering which is not burn is strong in heat and high pressure. Easy to install it in the defined space, due to compact height.

MODEL [ØD-T]

Tube (Metric) - Thread(R)						(mm)
MODEL	R	A	B	L	H	
SM M5	M5	4	3	8.5	8	
SM 01	R 1/8	7	3.5	11.5	12	
SM 02	R 1/4	9.5	4	15	15	
SM 03	R 3/8	10.5	5	17	19	
SM 04	R 1/2	12	6	20	22	
SM 06	R 3/4	12	6.5	20.5	27	
SM 08	R 1	14.5	7	24.5	36	

SCEL

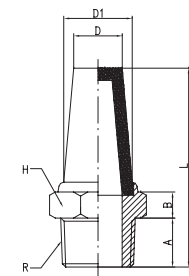


- ▶ **Application** : Hydraulic & Pneumatic equipment, Water Purifier, Automobile parts, Water Ionizer, Water Heater, Tooling, etc.
- ▶ **Material** : Steel, Brass
- ▶ **Feature** : Silencer with Brass Sintering which is not burn is strong in heat and high pressure. Silencer with steel is excellent in anti-corrosion. Superior mechanical strength.

MODEL [ØD-T]

Tube (Metric) - Thread(R)								(mm)
MODEL	A	R	φD	φd	F	S	L	
SCEL M5	M5	7.8	5	2.5	4	7	17.5	
SCEL 01	R 1/8	13.2	8.5	7	7	12	23.5	
SCEL 02	R 1/4	16.2	11	9.5	9.5	15	30.5	
SCEL 03	R 3/8	20.5	14	12.5	10.5	19	38.5	
SCEL 04	R 1/2	25.6	17	15.5	12	23	44.5	
SCEL 06	R 3/4	33.4	21	20.5	12	30	54.5	
SCEL 08	R 1	40	26.5	26	14.5	36	69.5	

SSL

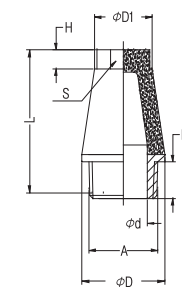


- ▶ **Application** : Hydraulic & Pneumatic equipment, Water Purifier, Automobile parts, Water Ionizer, Water Heater, Tooling, etc.
- ▶ **Material** : Stainless Steel
- ▶ **Feature** : Silencer with stainless steel is strong in heat and high pressure. It is excellent in anti-corrosion and anti-chemicals.

MODEL [ØD-T]

Tube (Metric) - Thread(R)								(mm)
MODEL	R	A	B	L	D	D1	H	
SSL 01	R 1/8	7	4.5	29	8.2	9	12	
SSL 02	R 1/4	9.5	4.5	33.5	10.5	12.5	15	
SSL 03	R 3/8	10.5	5	40.5	12.5	15	19	
SSL 04	R 1/2	12	6.5	50.5	16	18	23	
SSL 06	R 3/4	12	7	59	22	25	30	
SSL 08	R 1	15	8	71	27.5	30	36	

SCTL

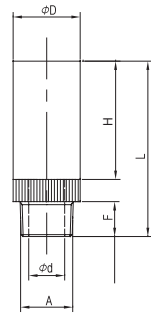


- ▶ **Application** : Hydraulic & Pneumatic equipment, Water Purifier, Automobile parts, Water Ionizer, Water Heater, Tooling, etc.
- ▶ **Material** : Steel, Brass
- ▶ **Feature** : Silencer with Brass Sintering which is not burn is strong in heat and high pressure. Silencer with steel is excellent in anti-corrosion. Superior mechanical strength.

MODEL [ØD-T]

Tube (Metric) - Thread(R)									(mm)
MODEL	A	φD	φD1	φd	F	H	S	L	
SCTL 01	R 1/8	12	10	6.5	7	3	8	24	
SCTL 02	R 1/4	15	11.5	9	9.5	4	10	31.5	
SCTL 03	R 3/8	19	15.5	11.5	10.5	5	13	39.5	
SCTL 04	R 1/2	23	17.8	15.5	12	6	15	47.5	
SCTL 06	R 3/4	30	25	22	12	6	19	59	
SCTL 08	R 1	37	31	28	14.5	7	24	72	

SCB

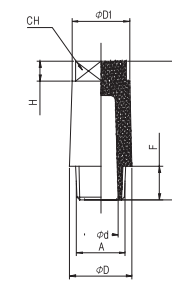


- ▶ **Application** : Hydraulic & Pneumatic equipment, Water Purifier, Automobile parts, Water Ionizer, Water Heater, Tooling, etc.
- ▶ **Material** : Steel, Red Copper
- ▶ **Feature** : It is strong in heat and high pressure. Strong thread with red cooper. It is excellent in anti-corrosion and anti-chemicals. Superior mechanical strength.

MODEL [ØD-T]

Tube (Metric) - Thread(R)							(mm)
MODEL	A	φD	φd	F	H	L	
SCB M5	R M5	8	3	4.5	11	18	
SCB 6S	R 1/8	11	6.5	7	14	23.5	
SCB 6L	R 1/8	13	7	8	25	38	

STL

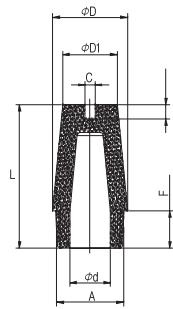


- ▶ **Application** : Hydraulic & Pneumatic equipment, Water Purifier, Automobile parts, Water Ionizer, Water Heater, Tooling, etc.
- ▶ **Material** : Brass
- ▶ **Feature** : Silencer with Brass Sintering which is not burn is strong in heat and high pressure. Superior mechanical strength.

MODEL [ØD-T]

Tube (Metric) - Thread(R)									(mm)
MODEL	A	φD	φD1	φd	F	H	CH	L	
STL 01	R 1/8	12	8.5	5	7	4.5	7	23.5	
STL 02	R 1/4	14	11.5	6.2	9.5	4.5	9	29.5	
STL 03	R 3/8	18	15.5	9	10.5	6	13	36.5	
STL 04	R 1/2	24	20.5	13	12	7	17	45	

SDL

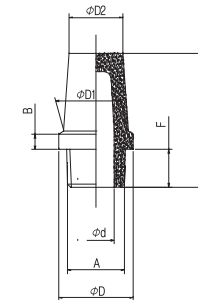


- ▶ **Application** : Hydraulic & Pneumatic equipment, Water Purifier, Automobile parts, Water Ionizer, Water Heater, Tooling, etc.
- ▶ **Material** : Brass
- ▶ **Feature** : Silencer with Brass Sintering which is not burn is strong in heat and high pressure. Excellent noise suppression effect. Superior mechanical strength.

MODEL [ØD-T]

Tube (Metric) - Thread(R)									(mm)
MODEL	A	φD	φD1	φd	F	C	t	L	
SDL 01	R 1/8	11	8	6	7	1.5	2	22.5	
SDL 02	R 1/4	14	10	8.5	9.5	1.5	2	28	
SDL 03	R 3/8	18	15	11	11	2	2	36	
SDL 04	R 1/2	24	19	15	12	2	3	45	
SDL 06	R 3/4	29.5	20	20	12	2.5	3	65	
SDL 08	R 1	35.5	26.5	25	15	4	4	75	

SBL

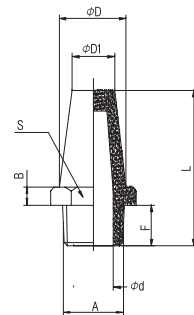


- ▶ **Application** : Hydraulic & Pneumatic equipment, Water Purifier, Automobile parts, Water Ionizer, Water Heater, Tooling, etc.
- ▶ **Material** : Brass
- ▶ **Feature** : Silencer with Brass Sintering which is not burn is strong in heat and high pressure. Superior mechanical strength.

MODEL [ØD-T]

Tube (Metric) - Thread(R)									(mm)
MODEL	A	φD	φD1	φD2	φd	F	H	L	
SBL 01	R 1/8	12.5	10.8	9	6	7	2.5	23	
SBL 02	R 1/4	16	13.2	11	7.5	9.5	3	29.5	
SBL 03	R 3/8	20	16.5	14.5	10	10.5	3.5	37.5	
SBL 04	R 1/2	26	20.5	18	12	12	4	45	

SEL

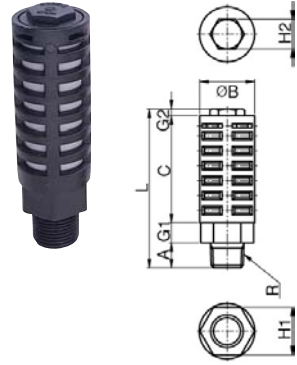


- ▶ **Application** : Hydraulic & Pneumatic equipment, Water Purifier, Automobile parts, Water Ionizer, Water Heater, Tooling, etc.
- ▶ **Material** : Brass
- ▶ **Feature** : Silencer with Brass Sintering which is not burn is strong in heat and high pressure. Superior mechanical strength.

MODEL [ØD-T]

Tube (Metric) - Thread(R)									(mm)
MODEL	A	φD	φD1	φd	F	B	S	L	
SEL 01	R 1/8	10	8	4	7	4	13	29	
SEL 02	R 1/4	14	12	6	9.5	4	17	35.5	
SEL 03	R 3/8	16.5	15	9	10.5	5	22	36.5	
SEL 04	R 1/2	20.5	19	12	12	7	27	44	
SEL 06	R 3/4	24	22	16	14	10	32	65	
SEL 08	R 1	31	28	22	16	10	41	75	

ST



- ▶ **Application** : Used for suppressing the noise of air release, applied to exhausted port of machine.
- ▶ **Material** : PBT, PE
- ▶ **Feature** : Small size used for in low noisy applications.
Made of plastic, very light and strong.
Compact design is suitable for installing in confined space.

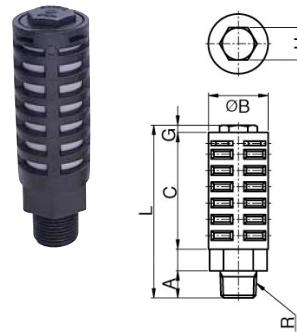
MODEL [ØD-T]

Tube (Metric) - Thread(R, G)										(mm)
MODEL	R	φB	L	C	A	H1	H2	G1	G2	
ST M5	M5	7.5	18	-	5	-	-	-	-	
ST 01	R 1/8	10.6	36.1	25.7	8	-	5.5	-	2.4	
ST 02	R 1/4	22	63.7	43	10	19	12	8	2.7	
ST 03	R 3/8	25	84.5	58	13.5	22	14	10	3.0	
ST 04	R 1/2	30	93.5	64	15.5	27	19	10.5	3.5	
ST G01	G 1/8	16	41	25	7	14	8	7	2	
ST G02	G 1/4	21	64	42.5	10	18	12	10	2.5	
ST G03	G 3/8	25	85	59.5	13	21.5	14.5	10	2.5	
ST G04	G 1/2	30	94	67	14	26	19	10	3	

※ The color of ST M5, ST G is gray.

ST(M)

Silencers(Manifold)

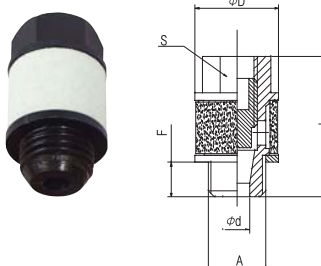


- ▶ **Application** : Used for suppressing the noise of air release, applied to exhausted port of machine.
- ▶ **Material** : PBT, PE
- ▶ **Feature** : Excellent noise suppression effect
Made of plastic, very light and strong.
Compact design is suitable for installing in confined space.

MODEL [ØD-T]

Tube (Metric) - Thread(R)								(mm)
MODEL	R	φB	L	C	A	H	G	
ST M02	R 1/4	15	46.5	36	8	10	2.5	
ST M03	R 3/8	22	57.7	45	10	12	2.7	

STP

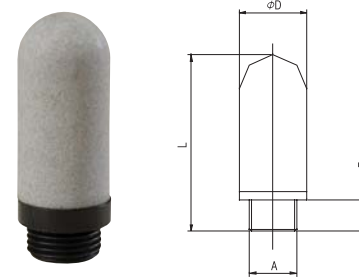


- ▶ **Application** : Used for suppressing the noise of air release, applied to exhausted port of machine.
- ▶ **Material** : Nylon, PE
- ▶ **Feature** : Small size used for in low noisy applications.
Made of plastic, very light and strong.
Compact design is suitable for installing in confined space.

MODEL [ØD-T]

Tube (Metric) - Thread(G)							(mm)
MODEL	A	φD	d	F	S	L	
STP G01	G 1/8	15	3	7	13	20.5	
STP G02	G 1/4	18	5	8.7	15	29.2	
STP G03	G 3/8	24	8	10	20	38.4	

SMT

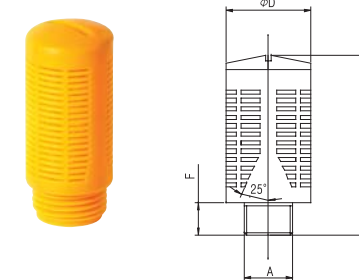


- ▶ **Application** : Used for suppressing the noise of air release, applied to exhausted port of machine.
- ▶ **Material** : PE
- ▶ **Feature** : Used for high flow and pressure applications.
Made of plastic, very light and strong.
Excellent noise suppression effect.

MODEL [ØD-T]

Tube (Metric) - Thread(G)					(mm)
MODEL	A	F	φD	L	
SMT M5	M5	4	7	23	
SMT G01	G 1/8	6.3	12.5	30	
SMT G02	G 1/4	7.4	17	34.5	
SMT G03	G 3/8	10.5	25	65	
SMT G04	G 1/2	10.6	25	67	
SMT G06	G 3/4	16	37	138	
SMT G08	G 1	20	48	150	

SLT

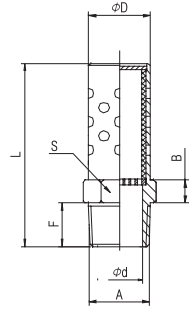


- ▶ **Application** : Used for suppressing the noise of air release, applied to exhausted port of machine.
- ▶ **Material** : PE
- ▶ **Feature** : Used for high flow and pressure applications.
Made of plastic, very light and strong.
Excellent noise suppression effect.

MODEL [ØD-T]

Tube (Metric) - Thread(G)					(mm)
MODEL	A	φD	L	F	
SLT G01	G 1/8	16	32	6.5	
SLT G02	G 1/4	20	42	8	
SLT G03	G 3/8	24	56	10	
SLT G04	G 1/2	24	56	10	
SLT G06	G 3/4	48	114	18.5	
SLT G08	G 1	48	114	18.5	

SB

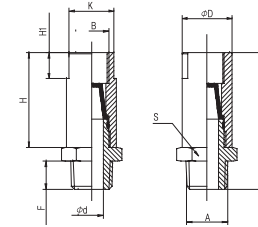


- ▶ **Application** : Hydraulic & Pneumatic equipment, Automobile parts, Tooling, etc.
- ▶ **Material** : Steel
- ▶ **Feature** : Used for high exhaust flow and unifying force applications. Excellent noise suppression effect.

MODEL [ØD-T]

MODEL	A	F	φD	φd	L	B	S
SB 01	R 1/8	7	10.4	6	35	3.5	11.1
SB 02	R 1/4	11	13.4	8.5	45	4	14.29
SB 03	R 3/8	12.8	16.5	12	53	4.5	17.4
SB 04	R 1/2	15.8	21.5	15	70	5	22.2
SB 06	R 3/4	17.7	26.5	20	80	6	27
SB 08	R1	22.5	32.3	26	98	7	33.3
SB 10	R 1/4	23	42.3	32	114	7.5	43
SB 12	R 1/2	25.5	50.3	40	127	8.5	51
SB 16	R2	26	59.3	50	140	9	60

SAM

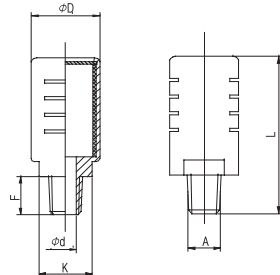


- ▶ **Application** : Hydraulic & Pneumatic equipment, Automobile parts, Tooling, etc.
- ▶ **Material** : AL, Brass
- ▶ **Feature** : Designed for exhausting water or remnants. AL material strong in corrosion and poor environment.

MODEL [ØD-T]

MODEL	A	B	φD	K	φd	F	H	HI	S	L
SAM 01	R 1/8	R 1/8	16	14	5.5	7	34	7	16	49
SAM 02	R 1/4	R 1/4	18.5	17	8	9.5	39	10	19	55.5
SAM 03	R 3/8	R 3/8	22	20	10	12.5	44	10	22	61.5
SAM 04	R 1/2	R 1/2	28	26	14.5	16.5	55	10	28.7	77
SAM 06	R 3/4	R 3/4	37.5	35	21	19	62	17.5	38	88

SLM

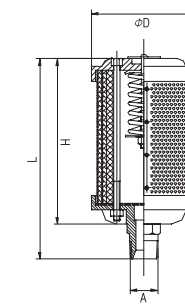


- ▶ **Application** : Hydraulic & Pneumatic equipment, Automobile parts, Tooling, etc.
- ▶ **Material** : AL
- ▶ **Feature** : Used for high exhaust flow and unifying force applications. AL material strong in corrosion and poor environment. Excellent noise suppression effect. Used for large equipment with high exhaust flow.

MODEL [ØD-T]

MODEL	A	F	φD	φd	K	L
SLM 01	R 1/8	7	10.4	6	16	35
SLM 02	R 1/4	11	13.4	8.5	16	45
SLM 03	R 3/8	12.8	16.5	12	25	53
SLM 04	R 1/2	15.8	21.5	15	25	70
SLM 06	R 3/4	17.7	26.5	20	41	80
SLM 08	R1	22.5	32.3	26	41	98
SLM G01	G 1/8	7	10.4	6	16	35
SLM G02	G 1/4	11	13.4	8.5	16	45
SLM G03	G 3/8	12.8	16.5	12	25	53
SLM G04	G 1/2	15.8	21.5	15	25	70
SLM G06	G 3/4	17.7	26.5	20	41	80
SLM G08	G1	22.5	32.3	26	41	98

SAL

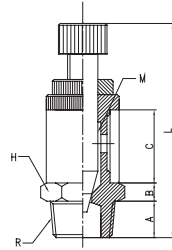


- ▶ **Application** : Hydraulic & Pneumatic equipment, Automobile parts, Tooling, etc.
- ▶ **Material** : AL
- ▶ **Feature** : Used for large equipment with high exhaust flow and noise. AL material strong in corrosion and poor environment. High silence effect with high density and exhaust flow.

MODEL [ØD-T]

MODEL	A	φD	H	L
SAL 04	R 1/2	80	125	159
SAL 06	R 3/4	87	156	180
SAL 08	R1	99	183	218
SAL 10	R1 1/4	99	183	218
SAL 12	R1 1/2	133	297	340
SAL 16	R2	133	432	470

SBC

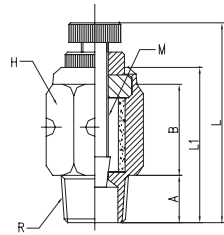


- ▶ **Application** : Hydraulic & Pneumatic equipment, Automobile parts, Tooling, etc.
- ▶ **Material** : Brass
- ▶ **Feature** : Silencer with Brass Sintering has the flow controller which controls the speed of cylinder.

MODEL [ØD-T]

Tube (Metric) - Thread(R)								(mm)
MODEL	R	A	B	C	L	H	M	
SBC 01	R 1/8	7	3	10	34	12	M4×0.5	
SBC 02	R 1/4	9.5	4	10.5	37	14	M5×0.5	
SBC 03	R 3/8	10.5	4	15	48	17	M7×0.75	
SBC 04	R 1/2	12	5	22	58.5	24	M9×0.75	
SBC 06	R 3/4	12	7	24	66	27	M10×1	
SBC 08	R 1	14.5	8	34	80.5	34	M10×1	

SCC

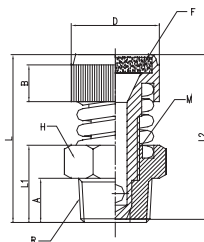


- ▶ **Application** : Hydraulic & Pneumatic equipment, Automobile parts, Tooling, etc.
- ▶ **Material** : Brass
- ▶ **Feature** : Silencer with Brass Sintering has the flow controller which controls the speed of cylinder. The brass cover around filter provides strong body.

MODEL [ØD-T]

Tube (Metric) - Thread(R)								(mm)
MODEL	R	A	B	L1	L	H	M	
SCC 01	R 1/8	7	13.5	22.9	34.2	13	M4×0.5	
SCC 02	R 1/4	9.5	15.5	27.5	38.5	14	M5×0.5	
SCC 03	R 3/8	10.5	17.5	30.5	44	17	M7×0.75	
SCC 04	R 1/2	12	20	34	48.5	22	M9×0.75	
SCC 06	R 3/4	14.5	24	41.5	60	27	M10×1	
SCC 08	R 1	16	31	50	70	34	M10×1	

SDC



- ▶ **Application** : Hydraulic & Pneumatic equipment, Automobile parts, Tooling, etc.
- ▶ **Material** : Brass
- ▶ **Feature** : Silencer with Brass Sintering has the flow controller which controls the speed of cylinder. Easy to install it in the defined space, due to compact height.

MODEL [ØD-T]

Tube (Metric) - Thread(R)											(mm)
MODEL	R	A	B	D	L1	L2	H	L	M	F	
SDC 01	R 1/8	7	5	12	11.5	21.8	12	24	M6×0.75	10×2	
SDC 02	R 1/4	9.5	6.5	14	15	25.8	15	29.5	M8×0.5	12×2	
SDC 03	R 3/8	10.5	8.5	17	16.5	31	19	33.5	M10×1	14×2	
SDC 04	R 1/2	12	8.5	18	20	33.5	22	37	M12×1	16×2	
SDC 06	R 3/4	12	11	23	21	46	27	48	M14×1	20×3	
SDC 08	R 1	15	15.5	28	25	55.5	34	57	M16×1.5	25×3	