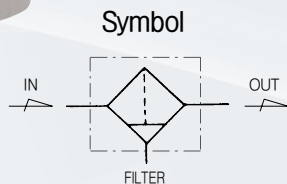


# PF2 Series

## Air Filter 1/8" and 1/4"

Air Filter



### Standard Specifications

Fluid	Air	
Max. operating pressure (MPa)	1.0(140psi)	
Proof pressure (MPa)	1.5(200psi)	
Ambient and fluid temperature (°C)	-5 ~ 60(23~140°F) (Non-freezing)	
Flow rate * (Nℓ /min)	1/8 "	1,100(39scfm)
	1/4 "	1,400(50scfm)
Bowl material	Polycarbonate	
Bowl guard material	Nylon	
Filtration (μm)	5	
Drain capacity (cm <sup>3</sup> )	Manual drain : 15(0.51oz)	
	Auto drain : 21(0.71oz)	
Weight (kg)	0.14(0.31lb)	

\* Test conditions : Supply pressure 0.6MPa(90psi), Pressure drop 0.07MPa(10psi)

### How to order

**PF 2 — \* 02 B D — \***

Series (Filter Units) — PF

Thread — 2

Blank	Rc(PT)
N	NPT
G	G(PF)

Port size — 02

01	1/8
02	1/4

Other Options — \*

Blank	Filter element - 5μm (Standard)		
J2	Filter element - 20μm	R	Flow direction : Right → Left
J4	Filter element - 40μm	XC16	Copper-free

\* When specifying more than one symbol, indicate them alphabetically  
Ex) J2R

Drain Options — B D

Blank	Manual Push Drain	Note1)
D	Auto Drain (N.O Type)	
D2	Auto Drain (Piping exhaust)	
D5	Manual Drain (Piping exhaust)	
Blank	Manual Push Drain	

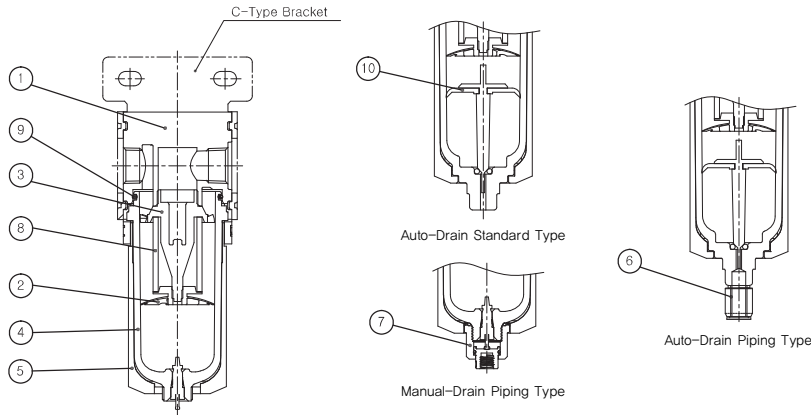
Note1) Min.operating pressure is 0.15MPa(20psi)  
for Auto Drain (N.O Type)

Bracket Options — \*

Blank	None	Note2)
B	Bracket	

Note2) Separately packed,  
Not assembled.

## Construction



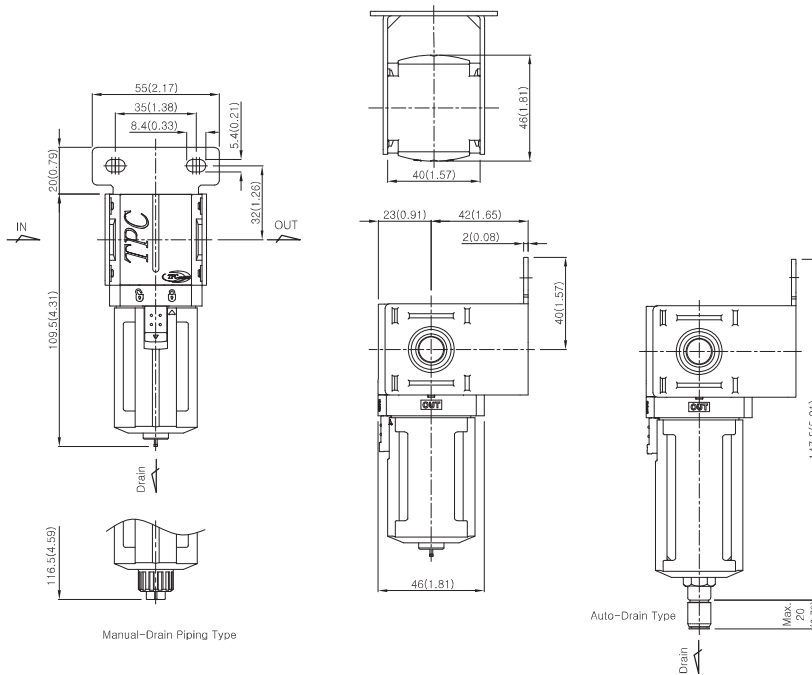
### Main Parts / Parts List

No.	Description	Material	Remarks
①	Body	Aluminum	
②	Baffle	Acetal	
③	Deflector	Nylon	
④	Bowl	Polycarbonate	
⑤	Bowl guard	Nylon	
⑥	Fitting	-	
⑦	Manual drain piping ass'y	-	

### Replacement Parts / Parts List

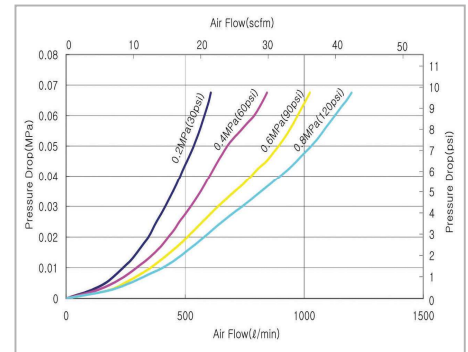
No.	Description	Material	Part No.
⑧	Filter element	Polyethelene	PF2-24-005-01
⑨	Bowl o-ring	NBR	DX2R-53-3000
⑩	Auto drain ass'y	-	PF2-26A002-01

## Dimensions

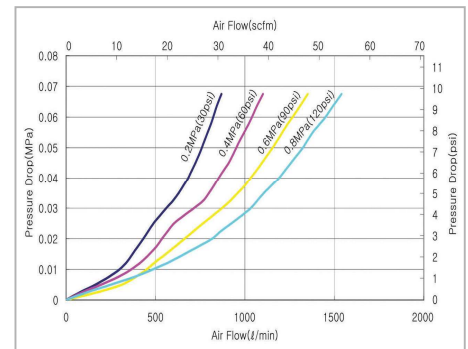


## Flow Characteristics

### ► 1/8" PF2



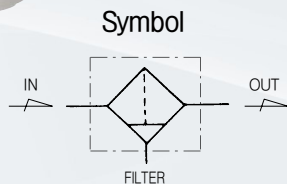
### ► 1/4" PF2



# PF3 Series

## Air Filter 1/4" and 3/8"

Air Filter

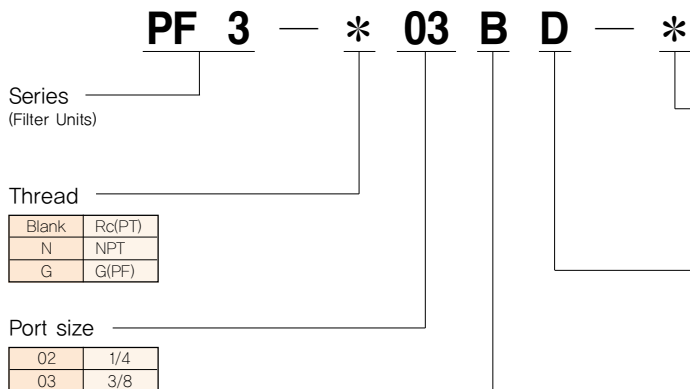


### Standard Specifications

Fluid	Air	
Max. operating pressure (MPa)	1.0(140psi)	
Proof pressure (MPa)	1.5(200psi)	
Ambient and fluid temperature (°C)	-5 ~ 60(23~140°F) (No freezing)	
Flow rate * (Nℓ /min)	1/4 "	2,100(74scfm)
	1/8 "	3,100(109scfm)
Bowl material	Polycarbonate	
Bowl guard material	Nylon	
Filtration (μm)	5	
Drain capacity (cm <sup>3</sup> )	Manual drain : 38(1.28oz)	
	Auto drain : 30(1.01oz)	
Weight (kg)	0.24(0.53lb)	

\* Test conditions : Supply pressure 0.6MPa(90psi), Pressure drop 0.07MPa(10psi)

### How to order



#### Other Options

Blank	Filter element - 5μm	R	Flow direction : Right → Left
J2	Filter element - 20μm	XC16	Copper-free
J4	Filter element - 40μm		

\* When specifying more than one symbol, indicate them alphabetically  
Ex) J2R

#### Drain Options

Blank	Manual Push Drain
D	Auto Drain (N.O Type)

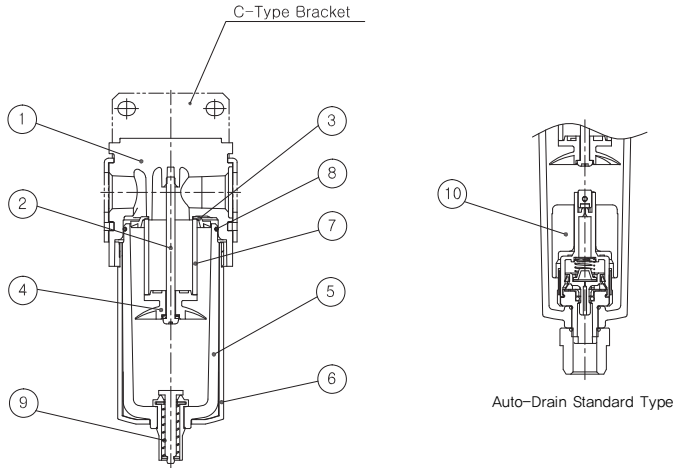
Note1) Min. operating pressure for Auto drain (N.O Type) : 0.15MPa(20psi)

#### Bracket Optionss

Blank	None
B	Bracket

Note2) Separately packed,  
Not assembled.

## Construction



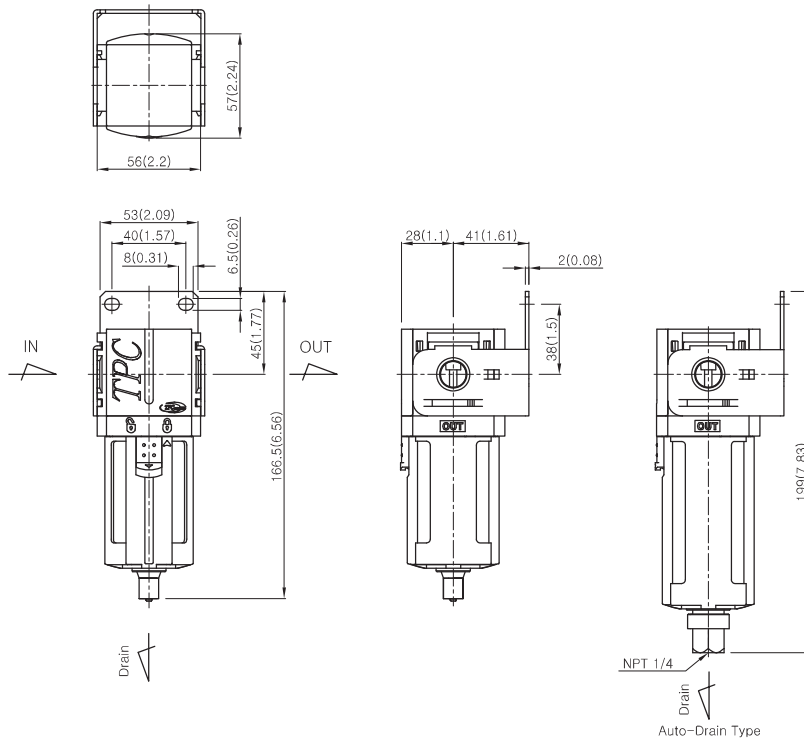
### Main Parts / Parts List

No.	Description	Material	Remarks
①	Body	Aluminum	
②	Baffle screw	Rolled steel	
③	Deflector	Nylon	
④	Baffle	Acetal	
⑤	Bowl	Polycarbonate	
⑥	Bowl guard	Nylon	

### Replacement Parts / Parts List

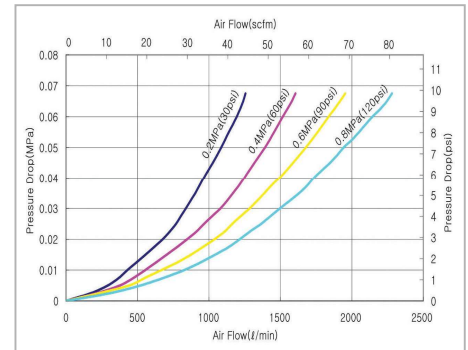
No.	Description	Material	Part No.
⑦	Filter element	Polyethylene	PF3-24-005-01
⑧	Bowl o-ring	NBR	PL3-04-001-01
⑨	Drain ass'y	-	TAF3000-10A-6004
⑩	Auto drain ass'y	-	TAF3000-04A-6008

## Dimensions

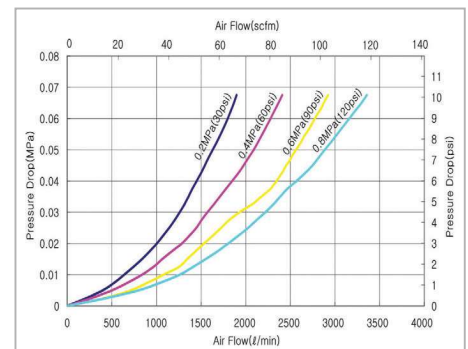


## Flow Characteristics

### ▶ 1/4" PF3



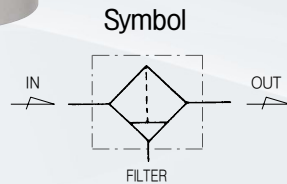
### ▶ 3/8" PF3



# PF4 Series

## Air Filter 3/8" and 1/2"

Air Filter



### Standard Specifications

Fluid	Air	
Max. operating pressure (MPa)	1.0(140psi)	
Proof pressure (MPa)	1.5(200psi)	
Ambient and fluid temperature (°C)	-5 ~ 60(23~140°F) (No freezing)	
Flow rate ※ (Nℓ /min)	3/8"	4,500(159scfm)
	1/2"	5,600(198scfm)
Bowl material	Polycarbonate	
Bowl guard material	Nylon	
Filtration (μm)	5	
Drain capacity (cm <sup>3</sup> )	Manual drain : 56(1.89oz)	
	Auto drain : 68(2.3oz)	
Weight (kg)	0.5(1.1lb)	

※ Test conditions : Supply pressure 0.6MPa(90psi), Pressure drop 0.07MPa(10psi)

### How to order

**PF 4 — \* 04 B D — \***

Series (Filter Units) — PF 4

Thread — \*

Blank	Rc(PT)
N	NPT
G	G(PF)

Port size — 04

03	3/8
04	1/2

Other Options

Blank	Filter element - 5μm	L	Life Indicator
J2	Filter element - 20μm	R	Flow direction : Right → Left
J4	Filter element - 40μm	XC16	Copper-free

\*When specifying more than one symbol, indicate them alphabetically Ex) J2R

Drain Options

Blank	Manual Push Drain
D	Auto Drain (N.O Type)

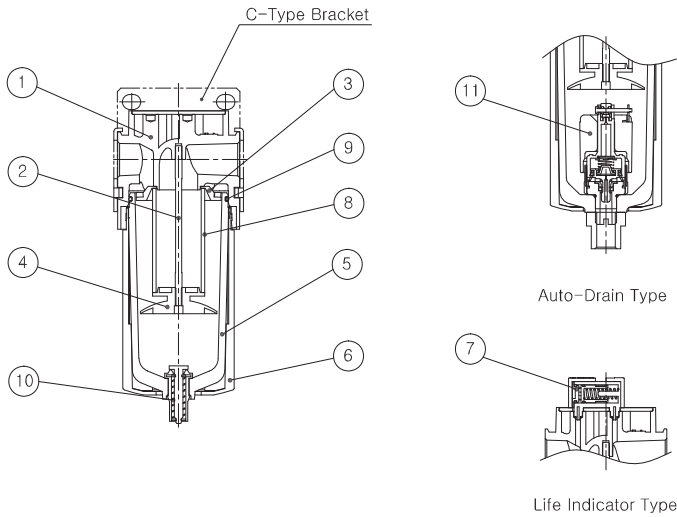
Note1) Min. operating pressure for Auto drain (N.O Type) : 0.15MPa(20psi)

Bracket Options

Blank	None
B	Bracket

Note2) Separately packed, Not assembled.

## Construction



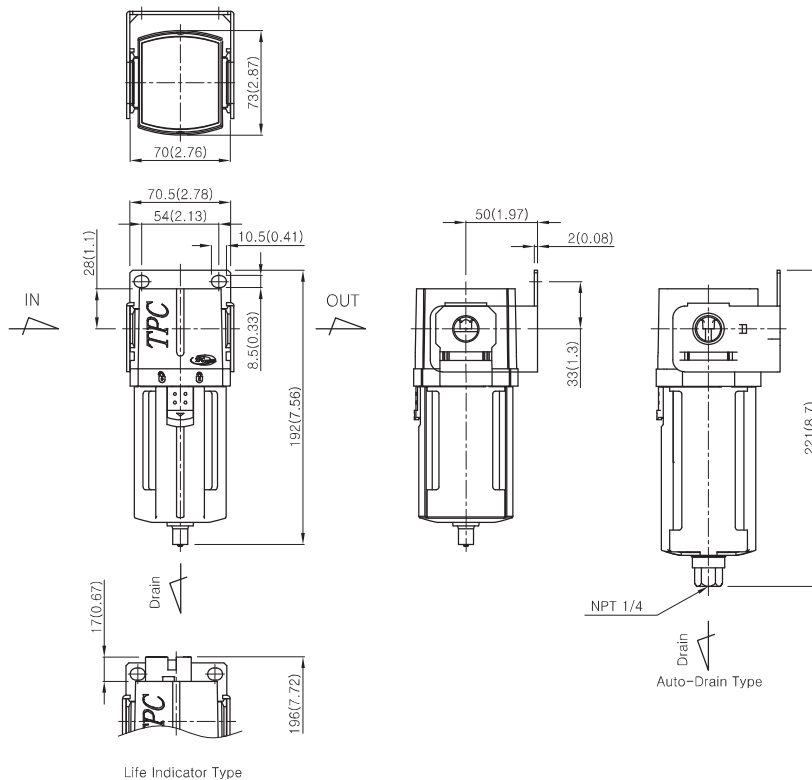
### Main Parts / Parts List

No.	Description	Material	Remarks
①	Body	Aluminum	
②	Baffle screw	Rolled steel	
③	Deflector	Nylon	
④	Baffle	Acetal	
⑤	Bowl	Polycarbonate	
⑥	Bowl guard	Nylon	
⑦	Life indicator	-	Option

### Replacement Parts / Parts List

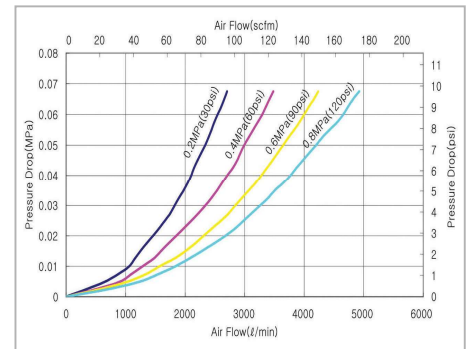
No.	Description	Material	Part No.
⑧	Filter element	Polyethylene	PF4-24-005-01
⑨	Bowl o-ring	NBR	TAF4000-08-6000
⑩	Drain ass'y	-	TAF3000-10A-6004
⑪	Auto drain ass'y	-	TAF3000-04A-6008

## Dimensions

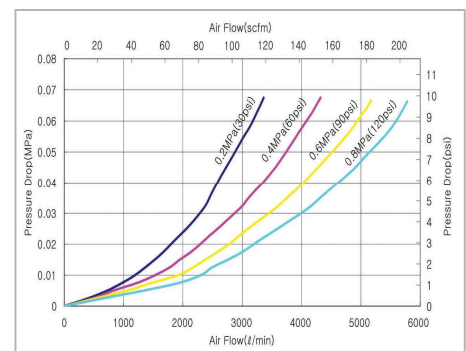


## Flow Characteristics

### ▶ 3/8" PF4



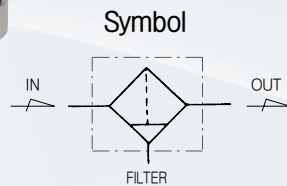
### ▶ 1/2" PF4



# PF5 Series

## Air Filter 3/4" and 1"

Air Filter



### Standard Specifications

Fluid	Air	
Max. operating pressure (MPa)	1.0(140psi)	
Proof pressure (MPa)	1.5(200psi)	
Ambient and fluid temperature (°C)	-5 ~ 60(23~140°F) (Non-freezing)	
Flow rate ※ (Nℓ /min)	3/4"	8,200(290scfm)
	1"	9,600(339scfm)
Bowl material	Polycarbonate	
Bowl guard material	Nylon	
Filtration (μm)	5	
Drain capacity (cm <sup>3</sup> )	Manual drain : 156(5.27oz)	
	Auto drain : 174(5.88oz)	
Weight (kg)	1.10(2.43lb)	

※ Test conditions : Supply pressure 0.6MPa(90psi), Pressure drop 0.07MPa(10psi)

### How to order

**PF 5** — **\*** **10** **B** **D** — **\***

Series (Filter Units) — PF 5

Thread — \*

Blank	Rc(PT)
N	NPT
G	G(PF)

Port size — 10

06	3/4
10	1

Other Options — \*

Blank	Filter element - 5μm	L	Life Indicator
J2	Filter element - 20μm	R	Flow direction : Right → Left
J4	Filter element - 40μm	XC16	Copper-free

\* When specifying more than one symbol, indicate them alphabetically Ex) J2R

Drain Options — D

Blank	Manual Push Drain
D	Auto Drain (N,O Type)

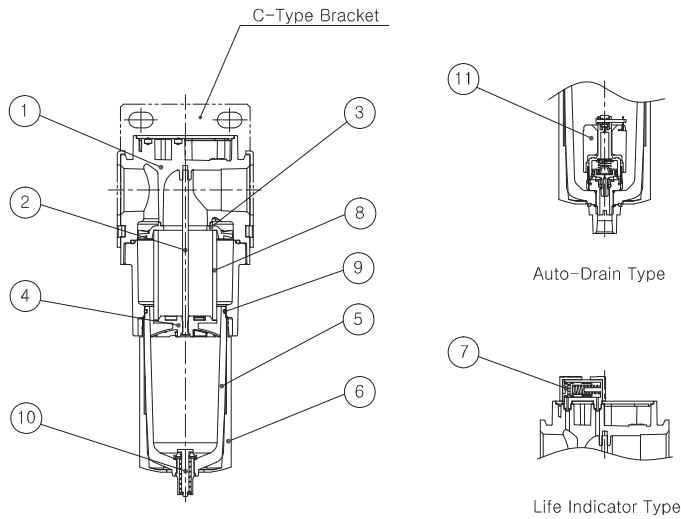
Note1) Min. operating pressure for Auto drain (N,O Type) : 0.15MPa(20psi)

Bracket Options — B

Blank	None
B	Bracket

Note2) Separately packed, Not assembled.

## Construction



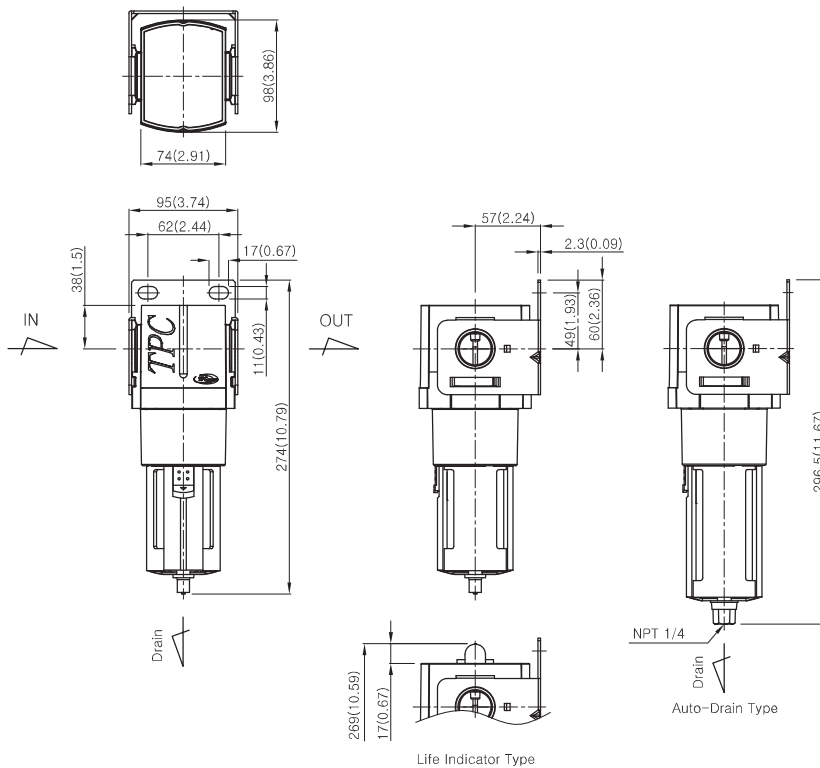
## Main Parts / Parts List

No.	Description	Material	Remarks
①	Body	Aluminum	
②	Baffle screw	Rolled steel	
③	Deflector	Nylon	
④	Baffle	Acetal	
⑤	Bowl	Polycarbonate	
⑥	Bowl guard	Nylon	
⑦	Life indicator	-	Option

## Replacement Parts / Parts List

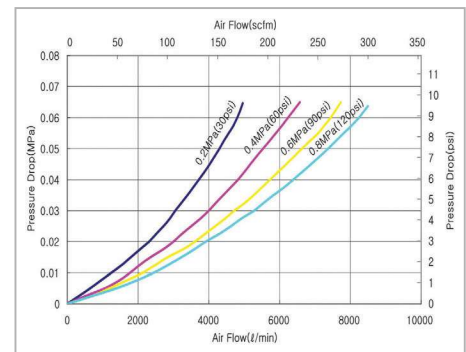
No.	Description	Material	Part No.
⑧	Filter element	Polyethylene	PF5-24-005-01
⑨	Bowl O-ring	NBR	TAF4000-08-6000
⑩	Drain ass'y	-	TAF3000-10A-6004
⑪	Auto drain ass'y	-	TAF3000-04A-6008

## Dimensions



## Flow Characteristics

### ▶ 3/4" PF5



### ▶ 1" PF5

