

SF2000. 1/8

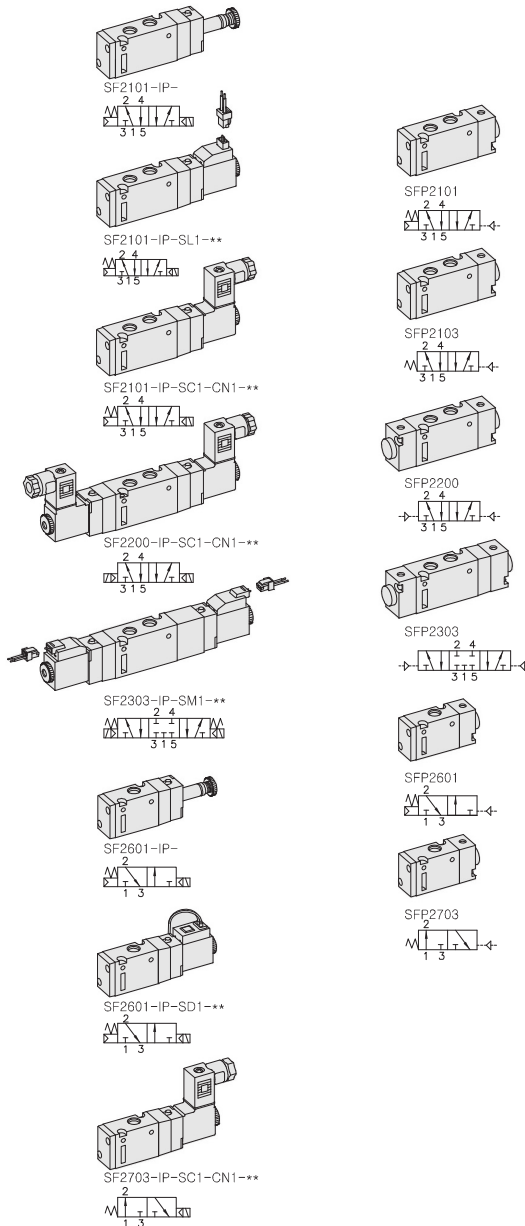
"F" FLEXIBLE Series

Solenoid / Pneumatic Valves

■ 5/2, 5/3, 3/2 - 1/8

■ 18mm Body Width

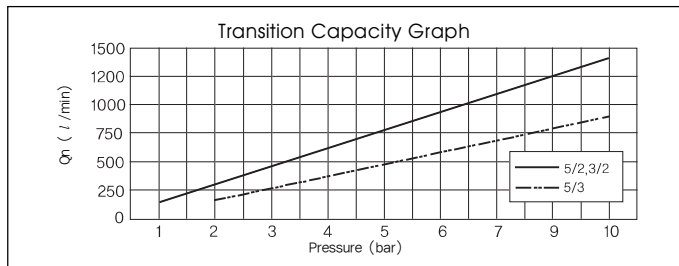
■ Transition Flow 700ℓ/min (5bar)



** : Voltage Selection (see page 80)

SPECIFICATION

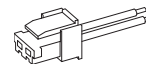
ITEM	SERIES	SOLENOID, PNEUMATIC	
	FUNCTION	5, 3 Port 2 Position	5 Port 3 Position
Fluids		Compressed Air & Inert Gases	
Pressure(bar)		1.5~10.0	2.0~10.0
Eff. Section Area(mm ²)-5bar		12.6	9.0
Ambient & Fluid Temp.		5~60°C(41~140°F)	
Response Time(5bar)		25ms or Less	35ms or Less
Max. Working Frequency		5c/sec	3c/sec
Lubrication		Not Required(Use ISO VG32#)	
Manual Override		Push Button(Standard), Lever Lock(Optional)	
Coil Insulation Class		F-Class or Equivalent	
Permissible Voltage Variation		±10% of Rated Voltage	
Off Min. Residual Voltage		AC:20% or Less / DC:10% or Less	
Power Consumption		Holding-AC:3.5VA(60Hz) / DC:2.5W	



The Material of Parts

- Valve Body : Die-Cast Aluminium
- Pilot Parts : Glass Filled Nylon
- Spool : Aluminium
- Armature : Stainless Steel
- Seals : NBR
- Armature Seals : Viton
- Spring : Stainless
- Cap : Zinc Pressure Die-Cast

Plug Connector With Clip



Ordering Code

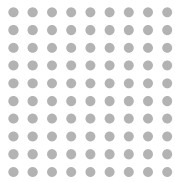
PG2-06 (L : 600mm)
PG2-10 (L : 1,000mm)

* The specification on each item can be amended without any prenotice to improve a performance.
* The specification on each item can be different from actual specification.

ORDERING NO.

SF2 1 0 1 - I P - SC1 - CN1 - A2

Valve Series	Function	Port Size & Thread	Return Method	Int/Ext. Pilot	Manual Operator	Solenoid Coil Type	Connector Type	Voltage
SF2 : Solenoid Valve	1 5/2 Single	0 G 1/8	0 None	I Internal Pilot	0 None	0 None	0 None	0 None
	2 5/2 Double	1 NPT 1/8	1 Air + Spring		P Push	SC1 3 Pin Connector Coil	CN1 Normal Connector	A2 AC 220V
	3 5/3 Closed Center		2 Air		Non-Locking	SG1 Grommet/Flying Leads	CD1 Connector With LED	A1 AC 110V
SFP2 : Pneumatic Valve	4 5/3 Open Center		3 Spring		L Lever Locking	SD1 Grommet/Flying Leads With LED	CZ1 Connector With LED & Surge Suppressor	A4 AC 24V
	5 5/3 Pressure Center					SL1 90 Degree Plug-in Wire Assembly With LED		D4 DC 24V
	6 3/2 Normally Closed					SM1 180 Degree Plug-in Wire Assembly With LED		D2 DC 12V
	7 3/2 Normally Open							

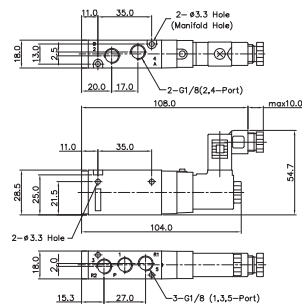


Solenoid & Pilot Actuated Spool Valves

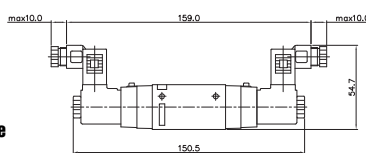
Port Thread 1/8

5Port 2Position Solenoid Valve

Single Solenoid
SF2101-IP-SC1-CN1-***

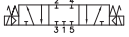


Double Solenoid
SF2200-IP-SC1-CN1-***

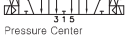


5Port 3Position Solenoid Valve

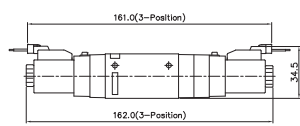
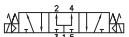
Closed Center
SF2303-IP-SM1-***



Exhaust Center
SF2403-IP-SM1-***



Pressure Center
SF2503-IP-SM1-***

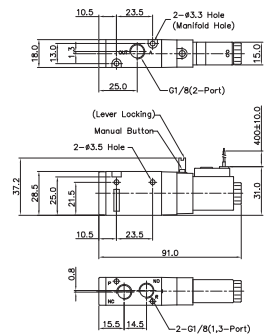


3Port 2Position Solenoid Valve

Normally Closed
SF2601-IP-SD1-***

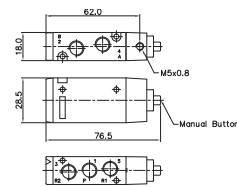
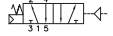


Normally Open
SF2701-IP-SD1-***

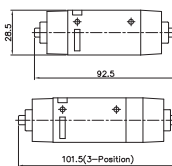


5Port 2Position Pneumatic Valve

Single Pneumatic
SFP2101

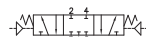


Double Pneumatic
SFP2200



5Port 3Position Pneumatic Valve

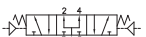
Closed Center
SFP2303



Exhaust Center
SFP2403

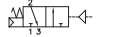


Pressure Center
SFP2503

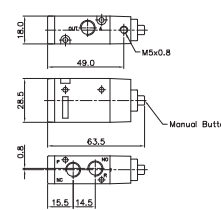


3Port 2Position Pneumatic Valve

Normally Closed
SFP2601



Normally Open
SFP2701

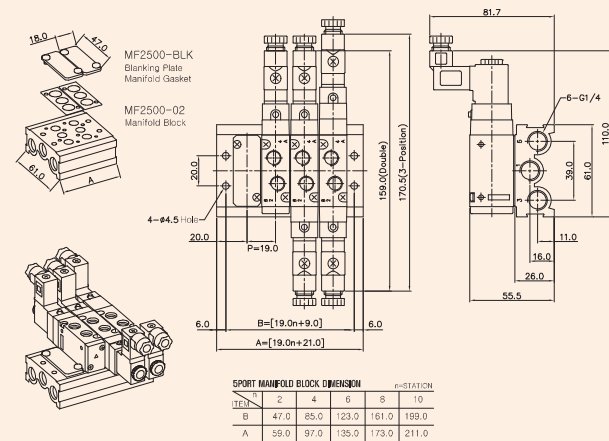


MF2000 MANIFOLD BLOCK

(SF2000 Solenoid & Pneumatic Valve Use)

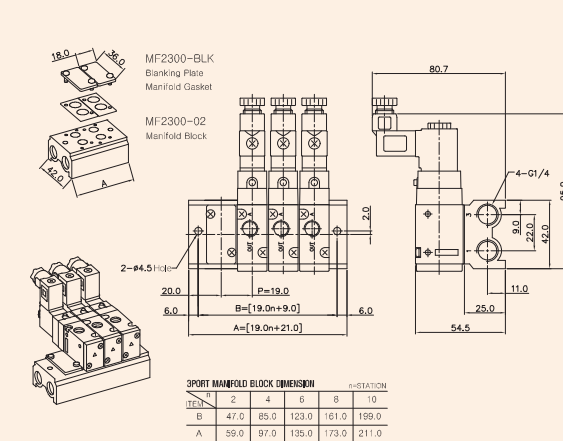
5-Port Manifold Block

MF2500-4

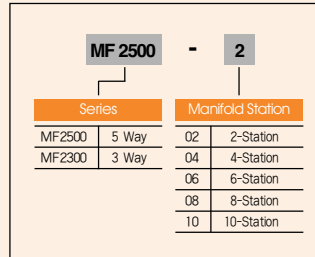


3-Port Manifold Block

MF2300-4



Manifold Block Ordering Code



Blanking Plate Ordering Code

