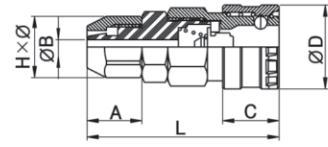


Minor Coupler



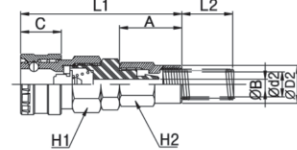
MHN Socket Nut



MODEL [ØD-T] Tube (Metric) – Thread (R)

MODEL	ØD	L	A	C	ØB	H x Ø	W.G(g)	Qty/Inbox
MHN21-S ZNDC	26	55.5	15	17.5	4	14 x 16	83.2	25
MHN23-S ZNDC	26	57.5	17	17.5	5	17 x 19	90.8	25
MHN24-S ZNDC	26	60.5	20	17.5	7	19 x 22	103.2	25

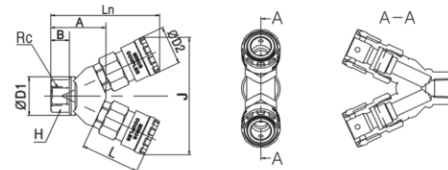
MHN-S Socket Nut Spring



MODEL [ØD-T] Tube (Metric) – Thread (R)

MODEL	ØD2	Ød2	ØB	L1	L2	A	C	H1	H2	W.G(g)	Qty/Inbox
MHN-S21S ZNDC	14	9.2	4	83	53	23	20.5	14	14	88.7	25
MHN-S23S ZNDC	17	11.2	5	88	67	27	20.5	17	17	97.8	20
MHN-S24S ZNDC	19	13.2	7	95	78	35	20.5	19	19	110.7	20

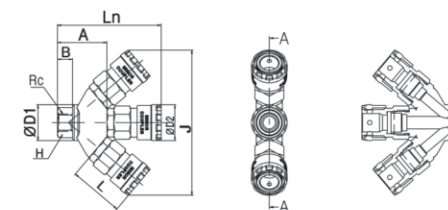
MLY Branch Y



MODEL [ØD-T] Tube (Metric) – Thread (R)

MODEL	Rc	Ln	L	ØD1	ØD2	A	B	J	H	W.G(g)	Qty/Inbox
MLY 22	Rc1/4	73.2	39.5	26	26	37	12.5	79	19	264.0	10

MLW Branch Triple



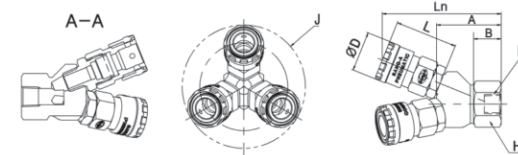
MODEL [ØD-T] Tube (Metric) – Thread (R)

MODEL	Rc	Ln	L	ØD1	ØD2	A	B	J	H	W.G(g)	Qty/Inbox
MLW 22	Rc 1/4	75.5	39.5	26	26	20	11	105.5	19	352	8

Minor Coupler



MLR Branch R



MODEL [ØD-T] Tube (Metric) – Thread (R)

MODEL	Rc	Ln	L	ØD	A	B	ØJ	H	W.G(g)	Qty/Inbox
MLR 22	Rc1/4	82	39.5	26	42	18	90	26	352	5
MLR 23	Rc3/8	82	39.5	26	42	18	90	26	350	5