



- 17 ONE-TOUCH FITTINGS
- 58 COMPACT ONE-TOUCH FITTINGS
- 76 SPEED CONTROLLERS
- 82 ROTARY JOINTS
- 90 STOP FITTINGS
- 96 CHECK VALVES
- 102 BALL VALVES
- 110 MAIN BLOCKS
- 116 HAND VALVES / HAND SLIDE VALVES
- 124 TWO-TOUCH FITTINGS
- 130 SILENCERS
- 142 AIR GUN
- 146 TUBE SERIES
- 154 ACE COUPLER
- 158 COMPACT ACE COUPLER
- 160 MINOR COUPLER
- 166 HP COUPLER
- 168 MOLD COUPLER
- 172 LIGHT COUPLER

Main Plant & head office #1045, Wolam-Dong, Dalseo-Gu, Daegu, Korea TEL: 82 53 583 5200 FAX: 82 53 583 5208 E-mail: sang-a@sanga2000.com
 Seoul office #60-24, Gasan-Dong, Geumcheon-Gu, Seoul, Korea TEL: 82 2 2635 4243 FAX: 82 2 2672 4657 E-mail: seoul@sanga2000.com
 Pusan office #578, Gwaebop-Dong, Sasang-Gu, Pusan, Korea TEL: 82 51 319 4231 FAX: 82 51 319 4232 E-mail: pusan@sanga2000.com
 Daegu office #1045, Wolam-Dong, Dalseo-Gu, Daegu, Korea TEL: 82 53 583 5200 FAX: 82 53 583 5208 E-mail: sang-a@sanga2000.com

ONE-TOUCH FITTINGS

Application

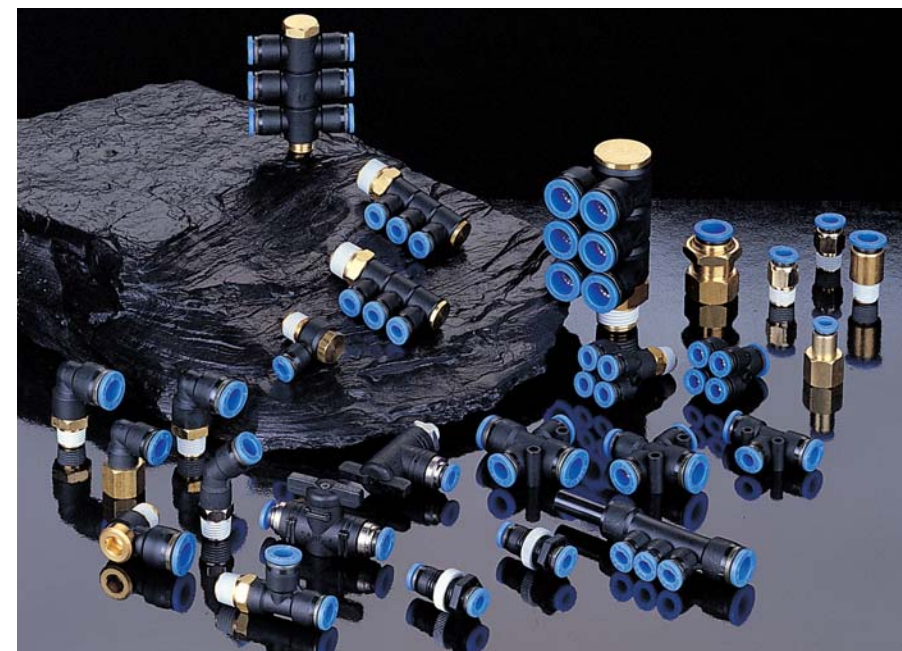
- One-touch joints used in pneumatic piping.
- Used for a wide variety of models to meet all needs.

Feature

- Easy to connect/disconnect tube by one touch.
- PC type is useful for piping in confined space, given its six-angle wrench processing inside.
- Elliptical sleeve makes it possible to apply and remove the tube easily in confined space.
- Fittings are equipped with a Gasket, O-ring and Teflon-Treatment already on the thread.

Specification

Fluid	Air (No other gases or liquids)	
Working Pressure Range	0~150PSI	0~9Kgf/cm ² (0~900kPa)
Negative Pressure	-29.5 in Hg	-750mmHg(10Torr)
Temperature Range	32~140 °F	0 ~ 60 °C
Applicable Tube Material	Polyurethane and Nylon	



Product Code System

PC 08-02

① ② ③ ④

①Type

②Tube Dia(∅D)

	Metric Size						Inch Size					
Code	04	06	08	10	12	16	5/32	3/16	1/4	5/16	3/8	1/2
Dia	∅4	∅6	∅8	∅10	∅12	∅16	∅5/32	∅3/16	∅1/4	∅5/16	∅3/8	∅1/2

③Thread Size(T)

* Metric Thread & R(PT) Thread

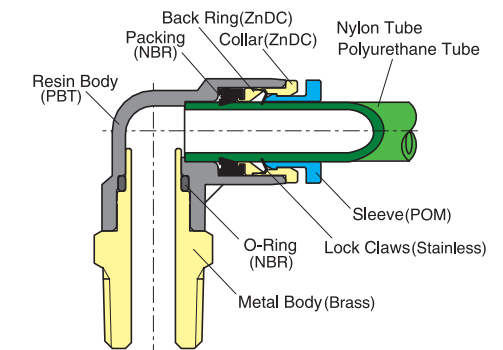
	Metric Size			Taper Pipe Thread		
Code	M5	M6	01	02	03	04
Size	M5 × 0.8	M6 × 1.0	R1/8	R1/4	R3/8	R1/2

* Inch Thread (UNF & NPT)

	Unified Fine Thread		American Standard Taper Pipe Thread		
Code	U10U	N01U	N02U	N03U	N04U
Size	10-32UNF	NPT1/8	NPT1/4	NPT3/8	NPT1/2

④U-Hexagon flat-to-flat inch specification (NPT)

Structural Diagram



Case In Use

►POC Model

- The hexagonal hole of the inside body makes it possible to tighten the fitting with a hexagonal wrench.
- A hexagonal wrench must be used due to the round exterior.

►PL Model

- Flexible for directional tube laying given its revolving construction of body (PL and PT type)

►Elliptical Sleeve

- Elliptical sleeve makes it possible to apply and remove the tube easily in confined spaces.

⚠ CAUTION

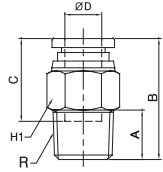
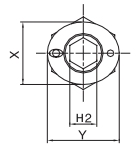
- Be sure to read the "Common Precautions" and the "Using Precautions of Fitting Series" (P6) before using.
- In putting tube on the fitting, be sure to push it deeply into the inside.
- In case of incorrect installation, there is a risk of air leakage or loose tube.

⚠ WARNING

- Be sure to confirm that proper conditions are met(specifications), otherwise there may be air leakage by damage on the fitting body.

PC

Male Straight



MODEL [ØD-T]

Tube (Metric) - Thread(R)

MODEL	ØD	R
PC 04-M5	4	M5
PC 04-M6	4	M6
PC 04-01	4	R1/8
PC 04-02	4	R1/4
PC 04-03	4	R3/8
PC 06-M5	6	M5
PC 06-M6	6	M6
PC 06-01	6	R1/8
PC 06-02	6	R1/4
PC 06-03	6	R3/8
PC 06-04	6	R1/2
PC 08-01	8	R1/8
PC 08-02	8	R1/4
PC 08-03	8	R3/8
PC 08-04	8	R1/2
PC 10-01	10	R1/8
PC 10-02	10	R1/4
PC 10-03	10	R3/8
PC 10-04	10	R1/2
PC 12-01	12	R1/8
PC 12-02	12	R1/4
PC 12-03	12	R3/8
PC 12-04	12	R1/2
PC 16-03	16	R3/8
PC 16-04	16	R1/2

Tube (Inch) - Thread(R)

MODEL	ØD	R
PC 5/32-01	5/32	R1/8
PC 5/32-02	5/32	R1/4
PC 5/32-03	5/32	R3/8
PC 3/16-01	3/16	R1/8
PC 3/16-02	3/16	R1/4
PC 3/16-03	3/16	R3/8
PC 1/4-01	1/4	R1/8
PC 1/4-02	1/4	R1/4
PC 1/4-03	1/4	R3/8
PC 1/4-04	1/4	R1/2
PC 5/16-01	5/16	R1/8
PC 5/16-02	5/16	R1/4
PC 5/16-03	5/16	R3/8
PC 5/16-04	5/16	R1/2
PC 3/8-01	3/8	R1/8
PC 3/8-02	3/8	R1/4
PC 3/8-03	3/8	R3/8
PC 3/8-04	3/8	R1/2
PC 1/2-01	1/2	R1/8
PC 1/2-02	1/2	R1/4
PC 1/2-03	1/2	R3/8
PC 1/2-04	1/2	R1/2

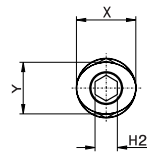
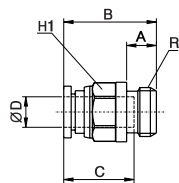
Tube (Inch) - Thread (NPT)

MODEL	ØD	R
PC 5/32-U10U	5/32	UNF10 *32
PC 5/32-N01U	5/32	NPT1/8
PC 5/32-N02U	5/32	NPT1/4
PC 5/32-N03U	5/32	NPT3/8
PC 3/16-U10U	3/16	UNF10 *32
PC 3/16-N01U	3/16	NPT1/8
PC 3/16-N02U	3/16	NPT1/4
PC 3/16-N03U	3/16	NPT3/8
PC 1/4-U10U	1/4	UNF10 *32
PC 1/4-N01U	1/4	NPT1/8
PC 1/4-N02U	1/4	NPT1/4
PC 1/4-N03U	1/4	NPT3/8
PC 1/4-N04U	1/4	NPT1/2
PC 5/16-N01U	5/16	NPT1/8
PC 5/16-N02U	5/16	NPT1/4
PC 5/16-N03U	5/16	NPT3/8
PC 5/16-N04U	5/16	NPT1/2
PC 3/8-N01U	3/8	NPT1/8
PC 3/8-N02U	3/8	NPT1/4
PC 3/8-N03U	3/8	NPT3/8
PC 3/8-N04U	3/8	NPT1/2
PC 1/2-N01U	1/2	NPT1/8
PC 1/2-N02U	1/2	NPT1/4
PC 1/2-N03U	1/2	NPT3/8
PC 1/2-N04U	1/2	NPT1/2

*Hexagonal wrench may be used for a proper tightening.

PC-G

Male Straight



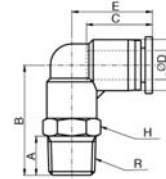
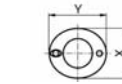
MODEL [ØD-T]

Tube (Metric) - Thread(G)

MODEL	ØD	R
PC 04-G01	4	G1/8
PC 04-G02	4	G1/4
PC 04-G03	4	G3/8
PC 06-G01	6	G1/8
PC 06-G02	6	G1/4
PC 06-G03	6	G3/8
PC 06-G04	6	G1/2
PC 08-G01	8	G1/8
PC 08-G02	8	G1/4
PC 08-G03	8	G3/8
PC 08-G04	8	G1/2
PC 10-G01	10	G1/8
PC 10-G02	10	G1/4
PC 10-G03	10	G3/8
PC 10-G04	10	G1/2
PC 12-G01	12	G1/8
PC 12-G02	12	G1/4
PC 12-G03	12	G3/8
PC 12-G04	12	G1/2
PC 16-G03	16	G3/8
PC 16-G04	16	G1/2

PL

Male Elbow



MODEL [ØD-T]

Tube (Metric) - Thread(R)

MODEL	ØD	R
PL 04-M5	4	M5
PL 04-M6	4	M6
PL 04-01	4	R1/8
PL 04-02	4	R1/4
PL 04-03	4	R3/8
PL 06-M5	6	M5
PL 06-M6	6	M6
PL 06-01	6	R1/8
PL 06-02	6	R1/4
PL 06-03	6	R3/8
PL 06-04	6	R1/2
PL 08-01	8	R1/8
PL 08-02	8	R1/4
PL 08-03	8	R3/8
PL 08-04	8	R1/2
PL 10-01	10	R1/8
PL 10-02	10	R1/4
PL 10-03	10	R3/8
PL 10-04	10	R1/2
PL 12-01	12	R1/8
PL 12-02	12	R1/4
PL 12-03	12	R3/8
PL 12-04	12	R1/2
PL 16-03	16	R3/8
PL 16-04	16	R1/2

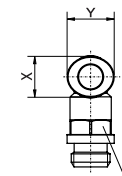
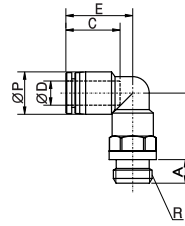
Tube (Inch) - Thread(R)

MODEL	ØD	R
PL 5/32-R01	5/32	R1/8
PL 5/32-R02	5/32	R1/4
PL 5/32-R03	5/32	R3/8
PL 3/16-R01	3/16	R1/8
PL 3/16-R02	3/16	R1/4
PL 3/16-R03	3/16	R3/8
PL 1/4-R01	1/4	R1/8
PL 1/4-R02	1/4	R1/4
PL 1/4-R03	1/4	R3/8
PL 1/4-R04	1/4	R1/2
PL 5/16-R01	5/16	R1/8
PL 5/16-R02	5/16	R1/4
PL 5/16-R03	5/16	R3/8
PL 5/16-R04	5/16	R1/2
PL 3/8-R01	3/8	R1/8
PL 3/8-R02	3/8	R1/4
PL 3/8-R03	3/8	R3/8
PL 3/8-R04	3/8	R1/2
PL 1/2-R01	1/2	R1/8
PL 1/2-R02	1/2	R1/4
PL 1/2-R03	1/2	R3/8
PL 1/2-R04	1/2	R1/2

*Rotating body construction after a proper installation.

PL-G

Male Elbow



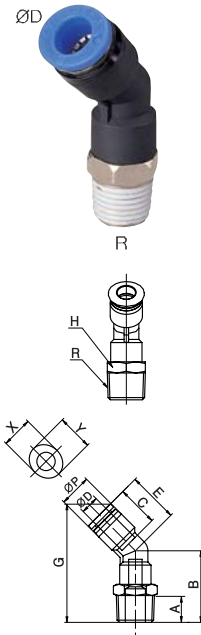
MODEL [ØD-T]

Tube (Metric) - Thread(G)

MODEL	ØD	R
PL 04-G01	4	G1/8
PL 04-G02	4	G1/4
PL 04-G03	4	G3/8
PL 06-G01	6	G1/8
PL 06-G02	6	G1/4
PL 06-G03	6	G3/8
PL 06-G04	6	G1/2
PL 08-G01	8	G1/8
PL 08-G02	8	G1/4
PL 08-G03	8	G3/8
PL 08-G04	8	G1/2
PL 10-G01	10	G1/8
PL 10-G02	10	G1/4
PL 10-G03	10	G3/8
PL 10-G04	10	G1/2
PL 12-G01	12	G1/8
PL 12-G02	12	G1/4
PL 12-G03	12	G3/8
PL 12-G04	12	G1/2
PL 16-G03	16	G3/8
PL 16-G04	16	G1/2

PL45

Male 45° Elbow



MODEL [ØD-T]

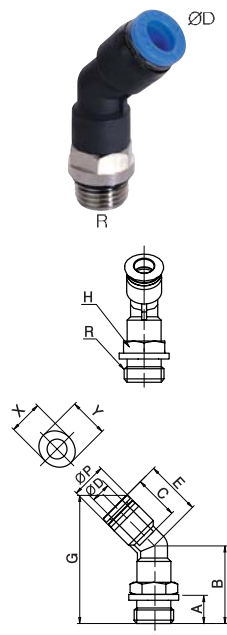
Tube (Metric) - Thread(R)			
MODEL	ØD	R	
PL45 04-M5	4	M5	
PL45 04-M6	4	M6	
PL45 04-01	4	R1/8	
PL45 04-02	4	R1/4	
PL45 04-03	4	R3/8	
PL45 06-M5	6	M5	
PL45 06-M6	6	M6	
PL45 06-01	6	R1/8	
PL45 06-02	6	R1/4	
PL45 06-03	6	R3/8	
PL45 06-04	6	R1/2	
PL45 08-01	8	R1/8	
PL45 08-02	8	R1/4	
PL45 08-03	8	R3/8	
PL45 08-04	8	R1/2	
PL45 10-01	10	R1/8	
PL45 10-02	10	R1/4	
PL45 10-03	10	R3/8	
PL45 10-04	10	R1/2	
PL45 12-01	12	R1/8	
PL45 12-02	12	R1/4	
PL45 12-03	12	R3/8	
PL45 12-04	12	R1/2	

Tube (Inch) - Thread(R)			
MODEL	ØD	R	
PL45 5/32-R01	5/32	R1/8	
PL45 5/32-R02	5/32	R1/4	
PL45 5/32-R03	5/32	R3/8	
PL45 3/16-R01	3/16	R1/8	
PL45 3/16-R02	3/16	R1/4	
PL45 3/16-R03	3/16	R3/8	
PL45 1/4-R01	1/4	R1/8	
PL45 1/4-R02	1/4	R1/4	
PL45 1/4-R03	1/4	R3/8	
PL45 1/4-R04	1/4	R1/2	
PL45 5/16-R01	5/16	R1/8	
PL45 5/16-R02	5/16	R1/4	
PL45 5/16-R03	5/16	R3/8	
PL45 5/16-R04	5/16	R1/2	
PL45 3/8-R01	3/8	R1/8	
PL45 3/8-R02	3/8	R1/4	
PL45 3/8-R03	3/8	R3/8	
PL45 3/8-R04	3/8	R1/2	
PL45 1/2-R01	1/2	R1/8	
PL45 1/2-R02	1/2	R1/4	
PL45 1/2-R03	1/2	R3/8	
PL45 1/2-R04	1/2	R1/2	

Tube (Inch) - Thread (NPT)			
MODEL	ØD	R	
PL45 5/32-U10U	5/32	UNF10 *32	
PL45 5/32-N01U	5/32	NPT1/8	
PL45 5/32-N02U	5/32	NPT1/4	
PL45 5/32-N03U	5/32	NPT3/8	
PL45 3/16-U10U	3/16	UNF10 *32	
PL45 3/16-N01U	3/16	NPT1/8	
PL45 3/16-N02U	3/16	NPT1/4	
PL45 3/16-N03U	3/16	NPT3/8	
PL45 1/4-U10U	1/4	UNF10 *32	
PL45 1/4-N01U	1/4	NPT1/8	
PL45 1/4-N02U	1/4	NPT1/4	
PL45 1/4-N03U	1/4	NPT3/8	
PL45 1/4-N04U	1/4	NPT1/2	
PL45 5/16-N01U	5/16	NPT1/8	
PL45 5/16-N02U	5/16	NPT1/4	
PL45 5/16-N03U	5/16	NPT3/8	
PL45 5/16-N04U	5/16	NPT1/2	
PL45 3/8-N01U	3/8	NPT1/8	
PL45 3/8-N02U	3/8	NPT1/4	
PL45 3/8-N03U	3/8	NPT3/8	
PL45 3/8-N04U	3/8	NPT1/2	
PL45 1/2-N01U	1/2	NPT1/8	
PL45 1/2-N02U	1/2	NPT1/4	
PL45 1/2-N03U	1/2	NPT3/8	
PL45 1/2-N04U	1/2	NPT1/2	

PL45-G

Male 45° Elbow

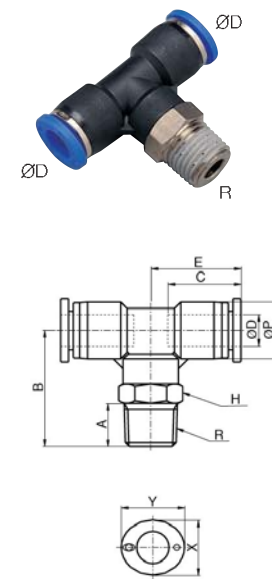


MODEL [ØD-T]

Tube (Metric) - Thread(G)			
MODEL	ØD	R	
PL45 04-G01	4	G1/8	
PL45 04-G02	4	G1/4	
PL45 04-G03	4	G3/8	
PL45 06-G01	6	G1/8	
PL45 06-G02	6	G1/4	
PL45 06-G03	6	G3/8	
PL45 06-G04	6	G1/2	
PL45 08-G01	8	G1/8	
PL45 08-G02	8	G1/4	
PL45 08-G03	8	G3/8	
PL45 08-G04	8	G1/2	
PL45 10-G01	10	G1/8	
PL45 10-G02	10	G1/4	
PL45 10-G03	10	G3/8	
PL45 10-G04	10	G1/2	
PL45 12-G01	12	G1/8	
PL45 12-G02	12	G1/4	
PL45 12-G03	12	G3/8	
PL45 12-G04	12	G1/2	

PT

Male Branch Tee



MODEL [ØD-T]

Tube (Metric) - Thread(R)			
MODEL	ØD	R	
PT 04-M5	4	M5	
PT 04-M6	4	M6	
PT 04-01	4	R1/8	
PT 04-02	4	R1/4	
PT 04-03	4	R3/8	
PT 06-M5	6	M5	
PT 06-M6	6	M6	
PT 06-01	6	R1/8	
PT 06-02	6	R1/4	
PT 06-03	6	R3/8	
PT 06-04	6	R1/2	
PT 08-01	8	R1/8	
PT 08-02	8	R1/4	
PT 08-03	8	R3/8	
PT 08-04	8	R1/2	
PT 10-01	10	R1/8	
PT 10-02	10	R1/4	
PT 10-03	10	R3/8	
PT 10-04	10	R1/2	
PT 12-01	12	R1/8	
PT 12-02	12	R1/4	
PT 12-03	12	R3/8	
PT 12-04	12	R1/2	
PT 16-03	16	R3/8	
PT 16-04	16	R1/2	

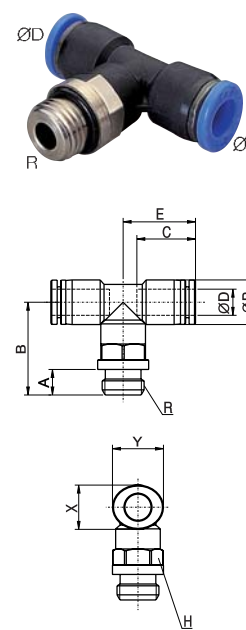
Tube (Inch) - Thread(R)			
MODEL	ØD	R	
PT 5/32-R01	5/32	R1/8	
PT 5/32-R02	5/32	R1/4	
PT 5/32-R03	5/32	R3/8	
PT 1/4-R01	1/4	R1/8	
PT 1/4-R02	1/4	R1/4	
PT 1/4-R03	1/4	R3/8	
PT 1/4-R04	1/4	R1/2	
PT 5/16-R01	5/16	R1/8	
PT 5/16-R02	5/16	R1/4	
PT 5/16-R03	5/16	R3/8	
PT 5/16-R04	5/16	R1/2	
PT 3/8-R01	3/8	R1/8	
PT 3/8-R02	3/8	R1/4	
PT 3/8-R03	3/8	R3/8	
PT 3/8-R04	3/8	R1/2	
PT 1/2-R01	1/2	R1/8	
PT 1/2-R02	1/2	R1/4	
PT 1/2-R03	1/2	R3/8	
PT 1/2-R04	1/2	R1/2	

Tube (Inch) - Thread (NPT)			
MODEL	ØD	R	
PT 5/32-U10U	5/32	UNF10 *32	
PT 5/32-N01U	5/32	NPT1/8	
PT 5/32-N02U	5/32	NPT1/4	
PT 5/32-N03U	5/32	NPT3/8	
PT 3/16-U10U	3/16	UNF10 *32	
PT 3/16-N01U	3/16	NPT1/8	
PT 3/16-N02U	3/16	NPT1/4	
PT 3/16-N03U	3/16	NPT3/8	
PT 1/4-U10U	1/4	UNF10 *32	
PT 1/4-N01U	1/4	NPT1/8	
PT 1/4-N02U	1/4	NPT1/4	
PT 1/4-N03U	1/4	NPT3/8	
PT 1/4-N04U	1/4	NPT1/2	
PT 5/16-N01U	5/16	NPT1/8	
PT 5/16-N02U	5/16	NPT1/4	
PT 5/16-N03U	5/16	NPT3/8	
PT 5/16-N04U	5/16	NPT1/2	
PT 3/8-N01U	3/8	NPT1/8	
PT 3/8-N02U	3/8	NPT1/4	
PT 3/8-N03U	3/8	NPT3/8	
PT 3/8-N04U	3/8	NPT1/2	
PT 1/2-N01U	1/2	NPT1/8	
PT 1/2-N02U	1/2	NPT1/4	
PT 1/2-N03U	1/2	NPT3/8	
PT 1/2-N04U	1/2	NPT1/2	

*Rotating body construction after a proper installation.

PT-G

Male Branch Tee

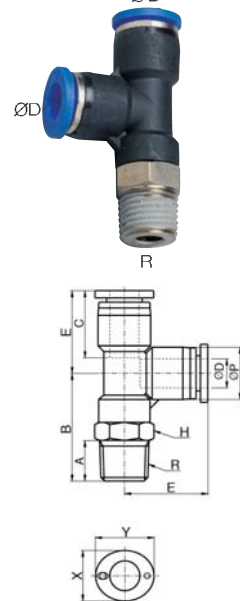


MODEL [ØD-T]

Tube (Metric) - Thread(G)			
MODEL	ØD	R	
PT 04-G01	4	G1/8	
PT 04-G02	4	G1/4	
PT 04-G03	4	G3/8	
PT 06-G01	6	G1/8	
PT 06-G02	6	G1/4	
PT 06-G03	6	G3/8	
PT 06-G04	6	G1/2	
PT 08-G01	8	G1/8	
PT 08-G02	8	G1/4	
PT 08-G03	8	G3/8	
PT 08-G04	8	G1/2	
PT 10-G01	10	G1/8	
PT 10-G02	10	G1/4	
PT 10-G03	10	G3/8	
PT 10-G04	10	G1/2	
PT 12-G01	12	G1/8	
PT 12-G02	12	G1/4	
PT 12-G03	12	G3/8	
PT 12-G04	12	G1/2	
PT 16-G03	16	G3/8	
PT 16-G04	16	G1/2	

PST

Male Run Tee $\varnothing D$



MODEL [$\varnothing D$ -T]

Tube (Metric) - Thread(R)			
MODEL	$\varnothing D$	R	
PST 04-M5	4	M5	
PST 04-M6	4	M6	
PST 04-01	4	R1/8	
PST 04-02	4	R1/4	
PST 04-03	4	R3/8	
PST 06-M5	6	M5	
PST 06-M6	6	M6	
PST 06-01	6	R1/8	
PST 06-02	6	R1/4	
PST 06-03	6	R3/8	
PST 06-04	6	R1/2	
PST 08-01	8	R1/8	
PST 08-02	8	R1/4	
PST 08-03	8	R3/8	
PST 08-04	8	R1/2	
PST 10-01	10	R1/8	
PST 10-02	10	R1/4	
PST 10-03	10	R3/8	
PST 10-04	10	R1/2	
PST 12-01	12	R1/8	
PST 12-02	12	R1/4	
PST 12-03	12	R3/8	
PST 12-04	12	R1/2	

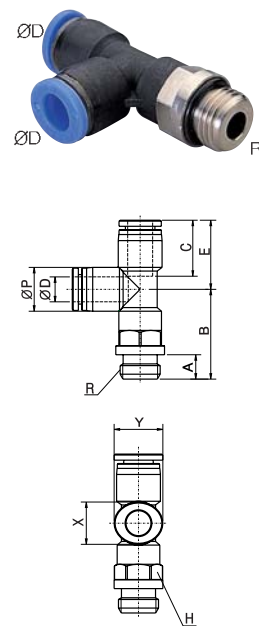
Tube (Inch) - Thread(R)			
MODEL	$\varnothing D$	R	
PST 5/32-R01	5/32	R1/8	
PST 5/32-R02	5/32	R1/4	
PST 5/32-R03	5/32	R3/8	
PST 1/4-R01	1/4	R1/8	
PST 1/4-R02	1/4	R1/4	
PST 1/4-R03	1/4	R3/8	
PST 5/16-R01	5/16	R1/8	
PST 5/16-R02	5/16	R1/4	
PST 5/16-R03	5/16	R3/8	
PST 5/16-R04	5/16	R1/2	
PST 3/8-R01	3/8	R1/8	
PST 3/8-R02	3/8	R1/4	
PST 3/8-R03	3/8	R3/8	
PST 3/8-R04	3/8	R1/2	
PST 1/2-R02	1/2	R1/4	
PST 1/2-R03	1/2	R3/8	
PST 1/2-R04	1/2	R1/2	

Tube (Inch) - Thread (NPT)			
MODEL	$\varnothing D$	R	
PST 5/32-U10U	5/32	UNF10 *32	
PST 5/32-N01U	5/32	NPT1/8	
PST 5/32-N02U	5/32	NPT1/4	
PST 3/16-U10U	3/16	UNF10 *32	
PST 3/16-N01U	3/16	NPT1/8	
PST 3/16-N02U	3/16	NPT1/4	
PST 3/16-N03U	3/16	NPT3/8	
PST 1/4-U10U	1/4	UNF10 *32	
PST 1/4-N01U	1/4	NPT1/8	
PST 1/4-N02U	1/4	NPT1/4	
PST 1/4-N03U	1/4	NPT3/8	
PST 5/16-N01U	5/16	NPT1/8	
PST 5/16-N02U	5/16	NPT1/4	
PST 5/16-N03U	5/16	NPT3/8	
PST 5/16-N04U	5/16	NPT1/2	
PST 3/8-N01U	3/8	NPT1/8	
PST 3/8-N02U	3/8	NPT1/4	
PST 3/8-N03U	3/8	NPT3/8	
PST 3/8-N04U	3/8	NPT1/2	
PST 1/2-N02U	1/2	NPT1/4	
PST 1/2-N03U	1/2	NPT3/8	
PST 1/2-N04U	1/2	NPT1/2	

*Rotating body construction after a proper installation.

PST-G

Male run Tee

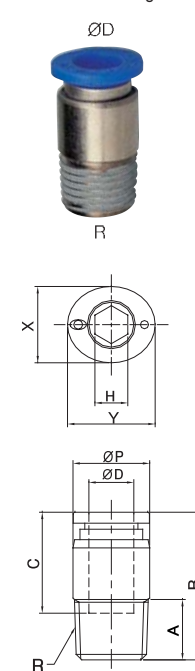


MODEL [$\varnothing D$ -T]

Tube (Metric) - Thread(G)			
MODEL	$\varnothing D$	R	
PST 04-G01	4	G1/8	
PST 04-G02	4	G1/4	
PST 04-G03	4	G3/8	
PST 06-G01	6	G1/8	
PST 06-G02	6	G1/4	
PST 06-G03	6	G3/8	
PST 06-G04	6	G1/2	
PST 08-G01	8	G1/8	
PST 08-G02	8	G1/4	
PST 08-G03	8	G3/8	
PST 08-G04	8	G1/2	
PST 10-G01	10	G1/8	
PST 10-G02	10	G1/4	
PST 10-G03	10	G3/8	
PST 10-G04	10	G1/2	
PST 12-G01	12	G1/8	
PST 12-G02	12	G1/4	
PST 12-G03	12	G3/8	
PST 12-G04	12	G1/2	

POC

Round Male Straight



MODEL [$\varnothing D$ -T]

Tube (Metric) - Thread(R)			
MODEL	$\varnothing D$	R	
POC 04-M5	4	M5	
POC 04-M6	4	M6	
POC 04-01	4	R1/8	
POC 04-02	4	R1/4	
POC 04-03	4	R3/8	
POC 06-M5	6	M5	
POC 06-M6	6	M6	
POC 06-01	6	R1/8	
POC 06-02	6	R1/4	
POC 06-03	6	R3/8	
POC 08-01	8	R1/8	
POC 08-02	8	R1/4	
POC 08-03	8	R3/8	
POC 08-04	8	R1/2	
POC 10-01	10	R1/8	
POC 10-02	10	R1/4	
POC 10-03	10	R3/8	
POC 10-04	10	R1/2	
POC 12-01	12	R1/8	
POC 12-02	12	R1/4	
POC 12-03	12	R3/8	
POC 12-04	12	R1/2	

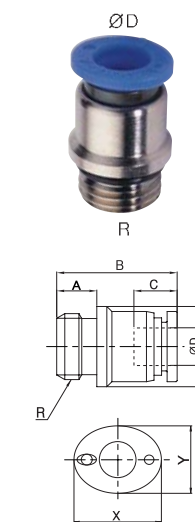
Tube (Inch) - Thread(R)			
MODEL	$\varnothing D$	R	
POC 1/4-R01	1/4	R1/8	
POC 1/4-R02	1/4	R1/4	
POC 5/16-R01	5/16	R1/8	
POC 5/16-R02	5/16	R1/4	
POC 5/16-R03	5/16	R3/8	
POC 3/8-R02	3/8	R1/4	
POC 3/8-R03	3/8	R3/8	
POC 3/8-R04	3/8	R1/2	

Tube (Inch) - Thread (NPT)			
MODEL	$\varnothing D$	R	
POC 5/32-U10U	5/32	UNF10 *32	
POC 5/32-N01U	5/32	NPT1/8	
POC 5/32-N02U	5/32	NPT1/4	
POC 5/32-N03U	5/32	NPT3/8	
POC 3/16-U10U	3/16	UNF10 *32	
POC 3/16-N01U	3/16	NPT1/8	
POC 3/16-N02U	3/16	NPT1/4	
POC 1/4-U10U	1/4	UNF10 *32	
POC 1/4-N01U	1/4	NPT1/8	
POC 1/4-N02U	1/4	NPT1/4	
POC 5/16-N01U	5/16	NPT1/8	
POC 5/16-N02U	5/16	NPT1/4	
POC 5/16-N03U	5/16	NPT3/8	
POC 3/8-N01U	3/8	NPT1/8	
POC 3/8-N02U	3/8	NPT1/4	
POC 3/8-N03U	3/8	NPT3/8	
POC 3/8-N04U	3/8	NPT1/2	
POC 1/2-N02U	1/2	NPT1/4	
POC 1/2-N03U	1/2	NPT3/8	
POC 1/2-N04U	1/2	NPT1/2	

*Hexagonal wrench may be used for a proper tightening.

POC-G

Male run Tee

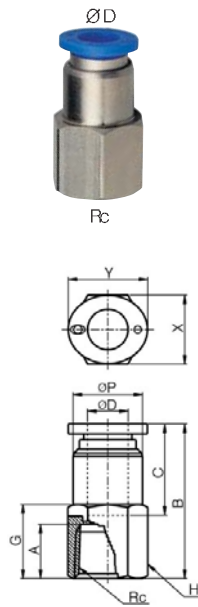


MODEL [$\varnothing D$ -T]

Tube (Metric) - Thread(G)			
MODEL	$\varnothing D$	R	
POC 04-G01	4	G1/8	
POC 04-G02	4	G1/4	
POC 04-G03	4	G3/8	
POC 06-G01	6	G1/8	
POC 06-G02	6	G1/4	
POC 06-G03	6	G3/8	
POC 08-G01	8	G1/8	
POC 08-G02	8	G1/4	
POC 08-G03	8	G3/8	
POC 08-G04	8	G1/2	
POC 10-G01	10	G1/8	
POC 10-G02	10	G1/4	
POC 10-G03	10	G3/8	
POC 10-G04	10	G1/2	
POC 12-G01	12	G1/8	
POC 12-G02	12	G1/4	
POC 12-G03	12	G3/8	
POC 12-G04	12	G1/2	

PCF

Female Straight


MODEL [ØD-T]

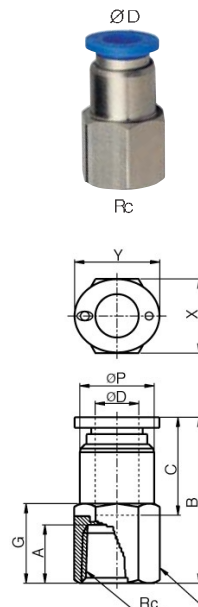
Tube (Metric) - Thread(R)		
MODEL	ØD	Rc
PCF 04-01	4	Rc1/8
PCF 04-02	4	Rc1/4
PCF 04-03	4	Rc3/8
PCF 06-01	6	Rc1/8
PCF 06-02	6	Rc1/4
PCF 06-03	6	Rc3/8
PCF 08-01	8	Rc1/8
PCF 08-02	8	Rc1/4
PCF 08-03	8	Rc3/8
PCF 08-04	8	Rc1/2
PCF 10-01	10	Rc1/8
PCF 10-02	10	Rc1/4
PCF 10-03	10	Rc3/8
PCF 10-04	10	Rc1/2
PCF 12-02	12	Rc1/4
PCF 12-03	12	Rc3/8
PCF 12-04	12	Rc1/2

Tube (Inch) - Thread(R)		
MODEL	ØD	Rc
PCF 5/32-R01	5/32	Rc1/8
PCF 5/32-R02	5/32	Rc1/4
PCF 5/32-R03	5/32	Rc3/8
PCF 3/16-R01	3/16	Rc1/8
PCF 3/16-R02	3/16	Rc1/4
PCF 1/4-R01	1/4	Rc1/8
PCF 1/4-R02	1/4	Rc1/4
PCF 1/4-R03	1/4	Rc3/8
PCF 5/16-R01	5/16	Rc1/8
PCF 5/16-R02	5/16	Rc1/4
PCF 5/16-R03	5/16	Rc3/8
PCF 5/16-R04	5/16	Rc1/2
PCF 3/8-R01	3/8	Rc1/8
PCF 3/8-R02	3/8	Rc1/4
PCF 3/8-R03	3/8	Rc3/8
PCF 3/8-R04	3/8	Rc1/2
PCF 1/2-R02	1/2	Rc1/4
PCF 1/2-R03	1/2	Rc3/8
PCF 1/2-R04	1/2	Rc1/2

Tube (Inch) - Thread (NPT)		
MODEL	ØD	Rc
PCF 5/32-N01U	5/32	NPT1/8
PCF 5/32-N02U	5/32	NPT1/4
PCF 3/16-N01U	3/16	NPT1/8
PCF 3/16-N02U	3/16	NPT1/4
PCF 1/4-N01U	1/4	NPT1/8
PCF 1/4-N02U	1/4	NPT1/4
PCF 1/4-N03U	1/4	NPT3/8
PCF 5/16-N01U	5/16	NPT1/8
PCF 5/16-N02U	5/16	NPT1/4
PCF 5/16-N03U	5/16	NPT3/8
PCF 5/16-N04U	5/16	NPT1/2
PCF 3/8-N01U	3/8	NPT1/8
PCF 3/8-N02U	3/8	NPT1/4
PCF 3/8-N03U	3/8	NPT3/8
PCF 3/8-N04U	3/8	NPT1/2
PCF 1/2-N02U	1/2	NPT1/4
PCF 1/2-N03U	1/2	NPT3/8
PCF 1/2-N04U	1/2	NPT1/2

PCF-G

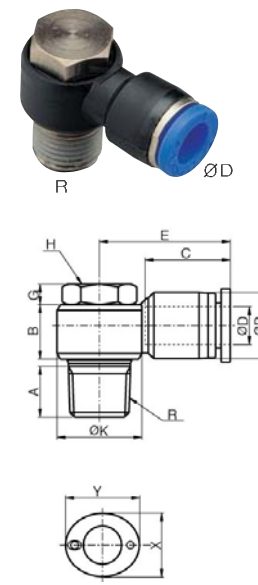
Female Straight


MODEL [ØD-T]

Tube (Metric) - Thread(G)		
MODEL	ØD	Rc
PCF 04-G01	4	G1/8
PCF 04-G02	4	G1/4
PCF 04-G03	4	G3/8
PCF 06-G01	6	G1/8
PCF 06-G02	6	G1/4
PCF 06-G03	6	G3/8
PCF 08-G01	8	G1/8
PCF 08-G02	8	G1/4
PCF 08-G03	8	G3/8
PCF 08-G04	8	G1/2
PCF 10-G01	10	G1/8
PCF 10-G02	10	G1/4
PCF 10-G03	10	G3/8
PCF 10-G04	10	G1/2
PCF 12-G02	12	G1/4
PCF 12-G03	12	G3/8
PCF 12-G04	12	G1/2

PH

Male Banjo


MODEL [ØD-T]

Tube (Metric) - Thread(R)		
MODEL	ØD	R
PH 04-M5	4	M5
PH 04-M6	4	M6
PH 04-01	4	R1/8
PH 04-02	4	R1/4
PH 06-M5	6	M5
PH 06-M6	6	M6
PH 06-01	6	R1/8
PH 06-02	6	R1/4
PH 06-03	6	R3/8
PH 08-01	8	R1/8
PH 08-02	8	R1/4
PH 08-03	8	R3/8
PH 08-04	8	R1/2
PH 10-02	10	R1/4
PH 10-03	10	R3/8
PH 10-04	10	R1/2
PH 12-02	12	R1/4
PH 12-03	12	R3/8
PH 12-04	12	R1/2

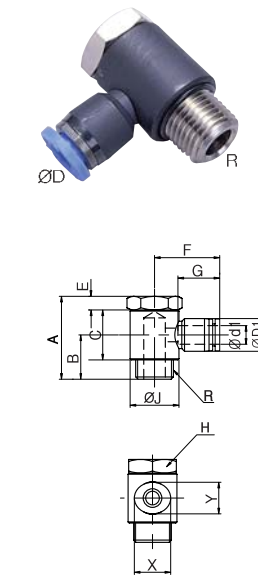
Tube (Inch) - Thread(R)		
MODEL	ØD	R
PH 5/32-M5	5/32	M5
PH 5/32-R01	5/32	R1/8
PH 1/4-M5	1/4	M5
PH 1/4-R01	1/4	R1/8
PH 1/4-R02	1/4	R1/4
PH 5/16-R01	5/16	R1/8
PH 5/16-R02	5/16	R1/4
PH 5/16-R03	5/16	R3/8
PH 3/8-R02	3/8	R1/4
PH 3/8-R03	3/8	R3/8
PH 3/8-R04	3/8	R1/2
PH 1/2-R03	1/2	R3/8
PH 1/2-R04	1/2	R1/2

Tube (Inch) - Thread (NPT)		
MODEL	ØD	R
PH 5/32-U10U	5/32	UNF10 *32
PH 5/32-N01U	5/32	NPT1/8
PH 3/16-U10U	3/16	UNF10 *32
PH 3/16-N01U	3/16	NPT1/8
PH 3/16-N02U	3/16	NPT1/4
PH 3/16-N03U	3/16	NPT3/8
PH 1/4-U10U	1/4	UNF10 *32
PH 1/4-N01U	1/4	NPT1/8
PH 1/4-N02U	1/4	NPT1/4
PH 5/16-N01U	5/16	NPT1/8
PH 5/16-N02U	5/16	NPT1/4
PH 5/16-N03U	5/16	NPT3/8
PH 3/8-N02U	3/8	NPT1/4
PH 3/8-N03U	3/8	NPT3/8
PH 3/8-N04U	3/8	NPT1/2
PH 1/2-N03U	1/2	NPT3/8
PH 1/2-N04U	1/2	NPT1/2

*Rotating body construction after a proper installation.

PH-G

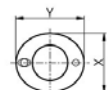
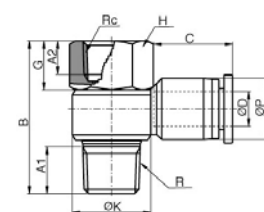
Female Banjo


MODEL [ØD-T]

Tube (Metric) - Thread(G)		
MODEL	ØD	R
PH 04-G01	4	G1/8
PH 06-G01	6	G1/8
PH 06-G02	6	G1/4
PH 08-G01	8	G1/8
PH 08-G02	8	G1/4
PH 08-G03	8	G3/8
PH 10-G02	10	G1/4
PH 10-G03	10	G3/8
PH 12-G03	12	G3/8
PH 12-G04	12	G1/2

PHF

Female Banjo



MODEL [ØD-T]

Tube (Metric) - Thread(R)

MODEL	ØD	Rc
PHF 04-M5	4	M5
PHF 04-M6	4	M6
PHF 04-01	4	R1/8
PHF 04-02	4	R1/4
PHF 06-M5	6	M5
PHF 06-M6	6	M6
PHF 06-01	6	R1/8
PHF 06-02	6	R1/4
PHF 06-03	6	R3/8
PHF 08-01	8	R1/8
PHF 08-02	8	R1/4
PHF 08-03	8	R3/8
PHF 08-04	8	R1/2
PHF 10-02	10	R1/4
PHF 10-03	10	R3/8
PHF 10-04	10	R1/2
PHF 12-02	12	R1/4
PHF 12-03	12	R3/8
PHF 12-04	12	R1/2

Tube (Inch) - Thread(R)

MODEL	ØD	Rc
PHF 5/32-M5	5/32	M5
PHF 5/32-R01	5/32	R1/8
PHF 1/4-M5	1/4	M5
PHF 1/4-R01	1/4	R1/8
PHF 1/4-R02	1/4	R1/4
PHF 5/16-R01	5/16	R1/8
PHF 5/16-R02	5/16	R1/4
PHF 5/16-R03	5/16	R3/8
PHF 3/8-R02	3/8	R1/4
PHF 3/8-R03	3/8	R3/8
PHF 1/2-R03	1/2	R3/8
PHF 1/2-R04	1/2	R1/2

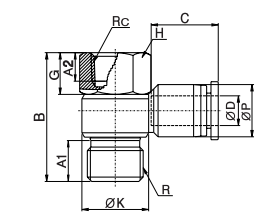
Tube (Inch) - Thread (NPT)

MODEL	ØD	Rc
PHF 5/32-U10U	5/32	UNF10 *32
PHF 5/32-N01U	5/32	NPT1/8
PHF 3/16-U10U	3/16	UNF10 *32
PHF 3/16-N01U	3/16	NPT1/8
PHF 3/16-N02U	3/16	NPT1/4
PHF 1/4-U10U	1/4	UNF10 *32
PHF 1/4-N01U	1/4	NPT1/8
PHF 1/4-N02U	1/4	NPT1/4
PHF 5/16-N01U	5/16	NPT1/8
PHF 5/16-N02U	5/16	NPT1/4
PHF 5/16-N03U	5/16	NPT3/8
PHF 3/8-N02U	3/8	NPT1/4
PHF 3/8-N03U	3/8	NPT3/8
PHF 1/2-N03U	1/2	NPT3/8
PHF 1/2-N04U	1/2	NPT1/2

*Rotating body construction after a proper installation.

PHF-G

Female Banjo



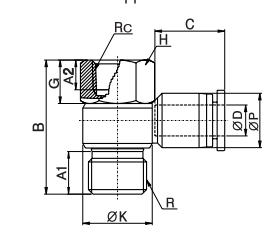
MODEL [ØD-T]

Tube (Metric) - Thread(G)

MODEL	ØD	Rc
PHF 04-G01	4	G1/8
PHF 06-G01	4	G1/8
PHF 06-G02	4	G1/4
PHF 08-G01	6	G1/8
PHF 08-G02	6	G1/4
PHF 08-G03	6	G3/8
PHF 10-G02	8	G1/4
PHF 10-G03	8	G3/8
PHF 12-G03	12	G3/8
PHF 12-G04	12	G1/2

PHF-GG

Female Banjo



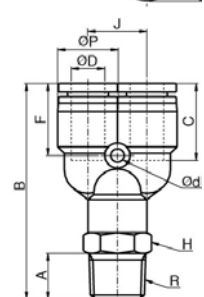
MODEL [ØD-T]

Tube (Metric) - Thread(G)

MODEL	ØD	Rc
PHF 04G01-G01	4	G1/8
PHF 06G01-G01	4	G1/8
PHF 06G02-G02	4	G1/4
PHF 08G01-G01	6	G1/8
PHF 08G02-G02	6	G1/4
PHF 08G03-G03	6	G3/8
PHF 10G02-G02	8	G1/4
PHF 10G03-G03	8	G3/8
PHF 12G03-G03	12	G3/8
PHF 12G04-G04	12	G1/2

PWT

Male Y



MODEL [ØD-T]

Tube (Metric) - Thread(R)

MODEL	ØD	R
PWT 04-M5	4	M5
PWT 04-M6	4	M6
PWT 04-01	4	R1/8
PWT 04-02	4	R1/4
PWT 04-03	4	R3/8
PWT 06-M5	6	M5
PWT 06-M6	6	M6
PWT 06-01	6	R1/8
PWT 06-02	6	R1/4
PWT 06-03	6	R3/8
PWT 08-01	8	R1/8
PWT 08-02	8	R1/4
PWT 08-03	8	R3/8
PWT 08-04	8	R1/2
PWT 10-01	10	R1/8
PWT 10-02	10	R1/4
PWT 10-03	10	R3/8
PWT 10-04	10	R1/2
PWT 12-01	12	R1/8
PWT 12-02	12	R1/4
PWT 12-03	12	R3/8
PWT 12-04	12	R1/2

Tube (Inch) - Thread(R)

MODEL	ØD	R
PWT 5/32-R01	5/32	R1/8
PWT 5/32-R02	5/32	R1/4
PWT 3/16-R01	3/16	R1/8
PWT 3/16-R02	3/16	R1/4
PWT 3/16-R03	3/16	R3/8
PWT 1/4-R01	1/4	R1/8
PWT 1/4-R02	1/4	R1/4
PWT 1/4-R03	1/4	R3/8
PWT 5/16-R01	5/16	R1/8
PWT 5/16-R02	5/16	R1/4
PWT 5/16-R03	5/16	R3/8
PWT 5/16-R04	5/16	R1/2
PWT 3/8-R01	3/8	R1/8
PWT 3/8-R02	3/8	R1/4
PWT 3/8-R03	3/8	R3/8
PWT 3/8-R04	3/8	R1/2
PWT 1/2-R02	1/2	R1/4
PWT 1/2-R03	1/2	R3/8
PWT 1/2-R04	1/2	R1/2

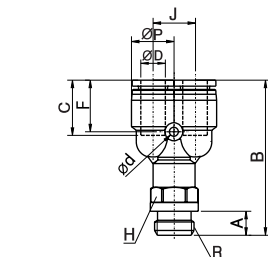
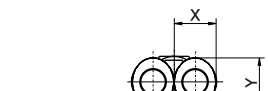
Tube (Inch) - Thread (NPT)

MODEL	ØD	R
PWT 5/32-U10U	5/32	UNF10 *32
PWT 5/32-N01U	5/32	NPT1/8
PWT 5/32-N02U	5/32	NPT1/4
PWT 3/16-U10U	5/32	UNF10 *32
PWT 3/16-N01U	3/16	NPT1/8
PWT 3/16-N02U	3/16	NPT1/4
PWT 3/16-N03U	3/16	NPT3/8
PWT 1/4-U10U	1/4	UNF10 *32
PWT 1/4-N01U	1/4	NPT1/8
PWT 1/4-N02U	1/4	NPT1/4
PWT 1/4-N03U	1/4	NPT3/8
PWT 5/16-N01U	5/16	NPT1/8
PWT 5/16-N02U	5/16	NPT1/4
PWT 5/16-N03U	5/16	NPT3/8
PWT 5/16-N04U	5/16	NPT1/2
PWT 3/8-N01U	3/8	NPT1/8
PWT 3/8-N02U	3/8	NPT1/4
PWT 3/8-N03U	3/8	NPT3/8
PWT 3/8-N04U	3/8	NPT1/2
PWT 1/2-N02U	1/2	NPT1/4
PWT 1/2-N03U	1/2	NPT3/8
PWT 1/2-N04U	1/2	NPT1/2

*Rotating body construction after a proper installation.

PWT-G

Male Y



MODEL [ØD-T]

Tube (Metric) - Thread(G)

MODEL	ØD	R
PWT 04-G01	4	G1/8
PWT 04-G02	4	G1/4
PWT 04-G03	4	G3/8
PWT 06-G01	6	G1/8
PWT 06-G02	6	G1/4
PWT 06-G03	6	G3/8
PWT 06-G04	6	G1/2
PWT 08-G01	8	G1/8
PWT 08-G02	8	G1/4
PWT 08-G03	8	G3/8
PWT 08-G04	8	G1/2
PWT 10-G01	10	G1/8
PWT 10-G02	10	G1/4
PWT 10-G03	10	G3/8
PWT 10-G04	10	G1/2
PWT 12-G01	12	G1/8
PWT 12-G02	12	G1/4
PWT 12-G03	12	G3/8
PWT 12-G04	12	G1/2

PHT(D2)

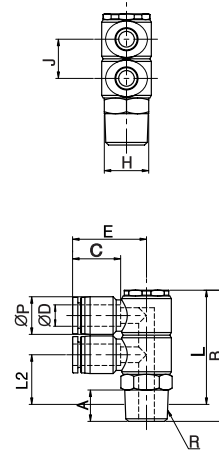
Double Universal Elbow



MODEL [ØD-T]

Tube (Metric) - Thread(R)

MODEL	ØD	R
PHT 04-01(2)	4	R1/8
PHT 04-02(2)	4	R1/4
PHT 04-03(2)	4	R3/8
PHT 06-01(2)	6	R1/8
PHT 06-02(2)	6	R1/4
PHT 06-03(2)	6	R3/8
PHT 08-01(2)	8	R1/8
PHT 08-02(2)	8	R1/4
PHT 08-03(2)	8	R3/8
PHT 08-04(2)	8	R1/2
PHT 10-02(2)	10	R1/4
PHT 10-03(2)	10	R3/8
PHT 10-04(2)	10	R1/2
PHT 12-02(2)	12	R1/4
PHT 12-03(2)	12	R3/8
PHT 12-04(2)	12	R1/2



*Rotating body construction after a proper installation.

PHT(D3)

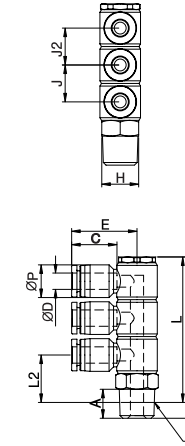
Triple Universal Elbow



MODEL [ØD-T]

Tube (Metric) - Thread(R)

MODEL	ØD	R
PHT 04-01(3)	4	R1/8
PHT 04-02(3)	4	R1/4
PHT 04-03(3)	4	R3/8
PHT 06-01(3)	6	R1/8
PHT 06-02(3)	6	R1/4
PHT 06-03(3)	6	R3/8
PHT 08-01(3)	8	R1/8
PHT 08-02(3)	8	R1/4
PHT 08-03(3)	8	R3/8
PHT 08-04(3)	8	R1/2
PHT 10-02(3)	10	R1/4
PHT 10-03(3)	10	R3/8
PHT 10-04(3)	10	R1/2
PHT 12-02(3)	12	R1/4
PHT 12-03(3)	12	R3/8
PHT 12-04(3)	12	R1/2



*Rotating body construction after a proper installation.

PHT(D2)-G

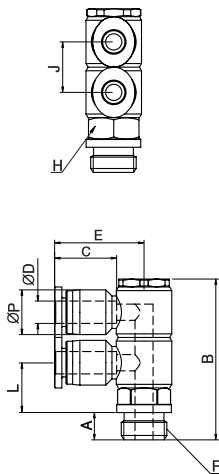
Double Universal Elbow



MODEL [ØD-T]

Tube (Metric) - Thread(G)

MODEL	ØD	R
PHT 04-G01(2)	4	G1/8
PHT 04-G02(2)	4	G1/4
PHT 04-G03(2)	4	G3/8
PHT 06-G01(2)	6	G1/8
PHT 06-G02(2)	6	G1/4
PHT 06-G03(2)	6	G3/8
PHT 08-G01(2)	8	G1/8
PHT 08-G02(2)	8	G1/4
PHT 08-G03(2)	8	G3/8
PHT 08-G04(2)	8	G1/2
PHT 10-G02(2)	10	G1/4
PHT 10-G03(2)	10	G3/8
PHT 10-G04(2)	10	G1/2
PHT 12-G02(2)	12	G1/4
PHT 12-G03(2)	12	G3/8
PHT 12-G04(2)	12	G1/2



PHT(D3)-G

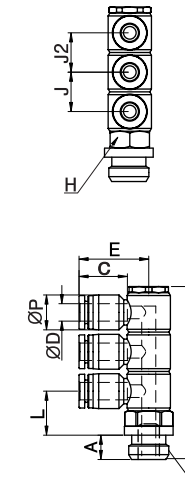
Triple Universal Elbow



MODEL [ØD-T]

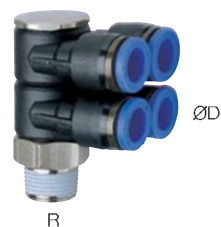
Tube (Metric) - Thread(G)

MODEL	ØD	R
PHT 04-G01(3)	4	G1/8
PHT 04-G02(3)	4	G1/4
PHT 04-G03(3)	4	G3/8
PHT 06-G01(3)	6	G1/8
PHT 06-G02(3)	6	G1/4
PHT 06-G03(3)	6	G3/8
PHT 08-G01(3)	8	G1/8
PHT 08-G02(3)	8	G1/4
PHT 08-G03(3)	8	G3/8
PHT 08-G04(3)	8	G1/2
PHT 10-G02(3)	10	G1/4
PHT 10-G03(3)	10	G3/8
PHT 10-G04(3)	10	G1/2
PHT 12-G02(3)	12	G1/4
PHT 12-G03(3)	12	G3/8
PHT 12-G04(3)	12	G1/2



PAT(D2)

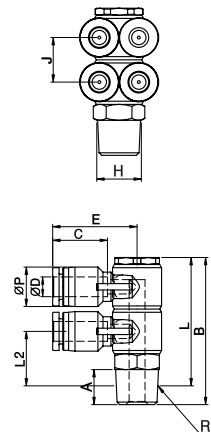
Double Branch A



MODEL [ØD-T]

Tube (Metric) - Thread(R)

MODEL	ØD	R
PAT 04-01(2)	4	R1/8
PAT 04-02(2)	4	R1/4
PAT 04-03(2)	4	R3/8
PAT 06-01(2)	6	R1/8
PAT 06-02(2)	6	R1/4
PAT 06-03(2)	6	R3/8
PAT 08-01(2)	8	R1/8
PAT 08-02(2)	8	R1/4
PAT 08-03(2)	8	R3/8
PAT 08-04(2)	8	R1/2
PAT 10-02(2)	10	R1/4
PAT 10-03(2)	10	R3/8
PAT 10-04(2)	10	R1/2
PAT 12-02(2)	10	R1/4
PAT 12-03(2)	12	R3/8
PAT 12-04(2)	12	R1/2



*Rotating body construction after a proper installation.

PAT(D2)-G

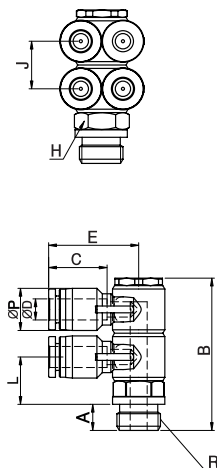
Double Branch A



MODEL [ØD-T]

Tube (Metric) - Thread(G)

MODEL	ØD	R
PAT 04-G01(2)	4	G1/8
PAT 04-G02(2)	4	G1/4
PAT 04-G03(2)	4	G3/8
PAT 06-G01(2)	6	G1/8
PAT 06-G02(2)	6	G1/4
PAT 06-G03(2)	6	G3/8
PAT 08-G01(2)	8	G1/8
PAT 08-G02(2)	8	G1/4
PAT 08-G03(2)	8	G3/8
PAT 08-G04(2)	8	G1/2
PAT 10-G02(2)	10	G1/4
PAT 10-G03(2)	10	G3/8
PAT 10-G04(2)	10	G1/2
PAT 12-G02(2)	12	G1/4
PAT 12-G03(2)	12	G3/8
PAT 12-G04(2)	12	G1/2



PAT(D3)

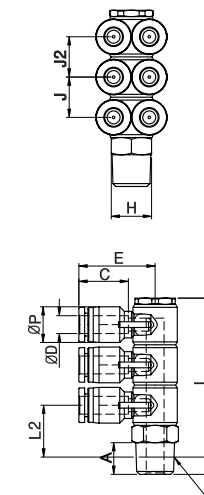
Triple Branch A



MODEL [ØD-T]

Tube (Metric) - Thread(R)

MODEL	ØD	R
PAT 04-01(3)	4	R1/8
PAT 04-02(3)	4	R1/4
PAT 04-03(3)	4	R3/8
PAT 06-01(3)	6	R1/8
PAT 06-02(3)	6	R1/4
PAT 06-03(3)	6	R3/8
PAT 08-01(3)	8	R1/8
PAT 08-02(3)	8	R1/4
PAT 08-03(3)	8	R3/8
PAT 08-04(3)	8	R1/2
PAT 10-02(3)	10	R1/4
PAT 10-03(3)	10	R3/8
PAT 10-04(3)	10	R1/2
PAT 12-02(3)	10	R1/4
PAT 12-03(3)	12	R3/8
PAT 12-04(3)	12	R1/2



*Rotating body construction after a proper installation.

PAT(D3)-G

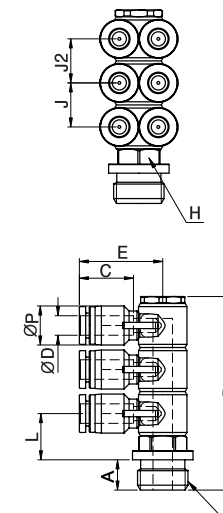
Triple Branch A



MODEL [ØD-T]

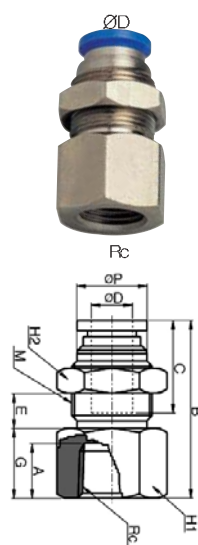
Tube (Metric) - Thread(G)

MODEL	ØD	R
PAT 04-G01(3)	4	G1/8
PAT 04-G02(3)	4	G1/4
PAT 04-G03(3)	4	G3/8
PAT 06-G01(3)	6	G1/8
PAT 06-G02(3)	6	G1/4
PAT 06-G03(3)	6	G3/8
PAT 08-G01(3)	8	G1/8
PAT 08-G02(3)	8	G1/4
PAT 08-G03(3)	8	G3/8
PAT 08-G04(3)	8	G1/2
PAT 10-G02(3)	10	G1/4
PAT 10-G03(3)	10	G3/8
PAT 10-G04(3)	10	G1/2
PAT 12-G02(3)	12	G1/4
PAT 12-G03(3)	12	G3/8
PAT 12-G04(3)	12	G1/2



PMF

Bulkhead Female Straight



MODEL [ØD-T]

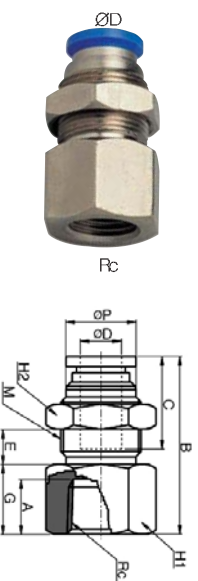
Tube (Metric) - Thread(R)		
MODEL	ØD	Rc
PMF 04-01	4	Rc1/8
PMF 04-02	4	Rc1/4
PMF 04-03	4	Rc3/8
PMF 06-01	6	Rc1/8
PMF 06-02	6	Rc1/4
PMF 06-03	6	Rc3/8
PMF 08-01	8	Rc1/8
PMF 08-02	8	Rc1/4
PMF 08-03	8	Rc3/8
PMF 08-04	8	Rc1/2
PMF 10-01	10	Rc1/8
PMF 10-02	10	Rc1/4
PMF 10-03	10	Rc3/8
PMF 10-04	10	Rc1/2
PMF 12-01	12	Rc1/8
PMF 12-02	12	Rc1/4
PMF 12-03	12	Rc3/8
PMF 12-04	12	Rc1/2

Tube (Inch) - Thread(R)		
MODEL	ØD	Rc
PMF 5/32-R01	5/32	Rc1/8
PMF 5/32-R02	5/32	Rc1/4
PMF 5/32-R03	5/32	Rc3/8
PMF 3/16-R01	3/16	Rc1/8
PMF 3/16-R02	3/16	Rc1/4
PMF 1/4-R01	1/4	Rc1/8
PMF 1/4-R02	1/4	Rc1/4
PMF 1/4-R03	1/4	Rc3/8
PMF 5/16-R01	5/16	Rc1/8
PMF 5/16-R02	5/16	Rc1/4
PMF 5/16-R03	5/16	Rc3/8
PMF 5/16-R04	5/16	Rc1/2
PMF 3/8-R01	3/8	Rc1/8
PMF 3/8-R02	3/8	Rc1/4
PMF 3/8-R03	3/8	Rc3/8
PMF 3/8-R04	3/8	Rc1/2
PMF 1/2-R01	1/2	Rc1/8
PMF 1/2-R02	1/2	Rc1/4
PMF 1/2-R03	1/2	Rc3/8
PMF 1/2-R04	1/2	Rc1/2

Tube (Inch) - Thread (NPT)		
MODEL	ØD	Rc
PMF 5/32-N01U	5/32	NPT1/8
PMF 3/16-N01U	5/32	NPT1/8
PMF 3/16-N02U	5/32	NPT1/4
PMF 1/4-N01U	1/4	NPT1/8
PMF 1/4-N02U	1/4	NPT1/4
PMF 5/16-N01U	5/16	NPT1/8
PMF 5/16-N02U	5/16	NPT1/4
PMF 5/16-N03U	5/16	NPT3/8
PMF 3/8-N02U	3/8	NPT1/4
PMF 3/8-N03U	3/8	NPT3/8
PMF 1/2-N02U	1/2	NPT1/4
PMF 1/2-N03U	1/2	NPT3/8
PMF 1/2-N04U	1/2	NPT1/2

PMF-G

Bulkhead Female Straight

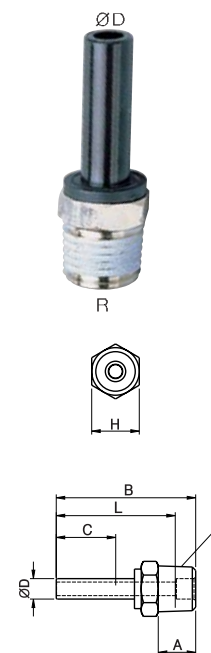


MODEL [ØD-T]

Tube (Metric) - Thread(G)		
MODEL	ØD	Rc
PMF 04-G01	4	G1/8
PMF 04-G02	4	G1/4
PMF 04-G03	4	G3/8
PMF 06-G01	6	G1/8
PMF 06-G02	6	G1/4
PMF 06-G03	6	G3/8
PMF 08-G01	8	G1/8
PMF 08-G02	8	G1/4
PMF 08-G03	8	G3/8
PMF 08-G04	8	G1/2
PMF 10-G01	10	G1/8
PMF 10-G02	10	G1/4
PMF 10-G03	10	G3/8
PMF 10-G04	10	G1/2
PMF 12-G01	12	G1/8
PMF 12-G02	12	G1/4
PMF 12-G03	12	G3/8
PMF 12-G04	12	G1/2

PCJ

Plug-In Male



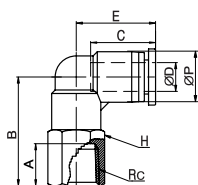
MODEL [ØD-T]

Tube (Metric) - Thread(R)		
MODEL	ØD	R
PCJ 04-M5	4	M5
PCJ 04-01	4	R1/8
PCJ 04-02	4	R1/4
PCJ 06-M5	6	M5
PCJ 06-01	6	R1/8
PCJ 06-02	6	R1/4
PCJ 06-03	8	R3/8
PCJ 08-01	8	R1/8
PCJ 08-02	8	R1/4
PCJ 08-03	8	R3/8
PCJ 10-02	10	R1/4
PCJ 10-03	10	R3/8
PCJ 10-04	10	R1/2
PCJ 12-02	10	R1/4
PCJ 12-03	12	R3/8
PCJ 12-04	12	R1/2
PCJ 16-03	16	R3/8
PCJ 16-04	16	R1/2

Tube (Inch) - Thread (NPT)		
MODEL	ØD	R
PCJ 5/32-U10U	5/32	UNF10 * 32
PCJ 5/32-N01U	5/32	NPT1/8
PCJ 5/32-N02U	5/32	NPT1/4
PCJ 3/16-U10U	3/16	UNF10 * 32
PCJ 3/16-N01U	3/16	NPT1/8
PCJ 3/16-N02U	3/16	NPT1/4
PCJ 1/4-U10U	1/4	UNF10 * 32
PCJ 1/4-N01U	1/4	NPT1/8
PCJ 1/4-N02U	1/4	NPT1/4
PCJ 1/4-N03U	1/4	NPT3/8
PCJ 5/16-N02U	5/16	NPT1/4
PCJ 5/16-N03U	5/16	NPT3/8
PCJ 3/8-N02U	3/8	NPT1/4
PCJ 3/8-N03U	3/8	NPT3/8
PCJ 3/8-N04U	3/8	NPT1/2
PCJ 1/2-N02U	1/2	NPT1/4
PCJ 1/2-N03U	1/2	NPT3/8
PCJ 1/2-N04U	1/2	NPT1/2

PLF

Female Elbow



MODEL [ØD-T]

Tube (Metric) - Thread(R)

MODEL	ØD	Rc
PLF 04-M5	4	M5
PLF 04-M6	4	M6
PLF 04-01	4	Rc1/8
PLF 04-02	4	Rc1/4
PLF 06-M5	6	M5
PLF 06-M6	6	M6
PLF 06-01	6	Rc1/8
PLF 06-02	6	Rc1/4
PLF 06-03	6	Rc3/8
PLF 08-01	8	Rc1/8
PLF 08-02	8	Rc1/4
PLF 08-03	8	Rc3/8
PLF 10-02	10	Rc1/4
PLF 10-03	10	Rc3/8
PLF 10-04	10	Rc1/2

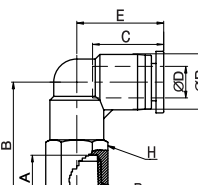
Tube (Inch) - Thread (NPT)

MODEL	ØD	Rc
PLF 5/32-U10U	5/32	UNF10 * 32
PLF 5/32-N01U	5/32	NPT1/8
PLF 5/32-N02U	5/32	NPT1/4
PLF 3/16-U10U	3/16	UNF10 * 32
PLF 3/16-N01U	3/16	NPT1/8
PLF 3/16-N02U	3/16	NPT1/4
PLF 3/16-N03U	3/16	NPT3/8
PLF 1/4-U10U	1/4	UNF10 * 32
PLF 1/4-N01U	1/4	NPT1/8
PLF 1/4-N02U	1/4	NPT1/4
PLF 1/4-N03U	1/4	NPT3/8
PLF 5/16-N01U	5/16	NPT1/8
PLF 5/16-N02U	5/16	NPT1/4
PLF 5/16-N03U	5/16	NPT3/8
PLF 3/8-N02U	3/8	NPT1/4
PLF 3/8-N03U	3/8	NPT3/8
PLF 3/8-N04U	3/8	NPT1/2

*Rotating body construction after a proper installation.

PLF-G

Female Elbow



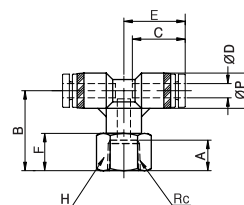
MODEL [ØD-T]

Tube (Metric) - Thread(G)

MODEL	ØD	Rc
PLF 04-G01	4	G1/8
PLF 04-G02	4	G1/4
PLF 06-G01	6	G1/8
PLF 06-G02	6	G1/4
PLF 06-G03	6	G3/8
PLF 08-G01	8	G1/8
PLF 08-G02	8	G1/4
PLF 08-G03	8	G3/8
PLF 10-G02	10	G1/4
PLF 10-G03	10	G3/8
PLF 10-G04	10	G1/2

PTF

Female Branch Tee



MODEL [ØD-T]

Tube (Metric) - Thread(R)

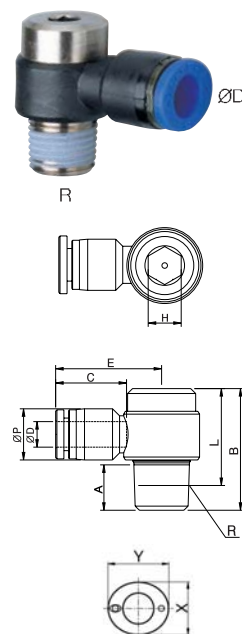
MODEL	ØD	Rc
PTF 04-M5	4	M5
PTF 04-M6	4	M6
PTF 04-01	4	Rc1/8
PTF 04-02	4	Rc1/4
PTF 06-M5	6	M5
PTF 06-M6	6	M6
PTF 06-01	6	Rc1/8
PTF 06-02	6	Rc1/4
PTF 06-03	6	Rc3/8
PTF 08-01	8	Rc1/8
PTF 08-02	8	Rc1/4
PTF 08-03	8	Rc3/8
PTF 10-02	10	Rc1/4
PTF 10-03	10	Rc3/8
PTF 10-04	10	Rc1/2

Tube (Inch) - Thread (NPT)

MODEL	ØD	Rc
PTF 5/32-U10U	5/32	UNF10 * 32
PTF 5/32-N01U	5/32	NPT1/8
PTF 5/32-N02U	5/32	NPT1/4
PTF 3/16-U01U	3/16	UNF10 * 32
PTF 3/16-N01U	3/16	NPT1/8
PTF 3/16-N02U	3/16	NPT1/4
PTF 3/16-N03U	3/16	NPT3/8
PTF 1/4-U10U	1/4	UNF10 * 32
PTF 1/4-N01U	1/4	NPT1/8
PTF 1/4-N02U	1/4	NPT1/4
PTF 1/4-N03U	1/4	NPT3/8
PTF 5/16-N01U	5/16	NPT1/8
PTF 5/16-N02U	5/16	NPT1/4
PTF 5/16-N03U	5/16	NPT3/8
PTF 3/8-N02U	3/8	NPT1/4
PTF 3/8-N03U	3/8	NPT3/8
PTF 3/8-N04U	3/8	NPT1/2

POL

Hex. Holed Banjo



MODEL [ØD-T]

Tube (Metric) - Thread(R)

MODEL	ØD	R
POL 04-M5	4	M5
POL 04-M6	4	M6
POL 04-01	4	R1/8
POL 06-M5	6	M5
POL 06-M6	6	M6
POL 06-01	6	R1/8
POL 06-02	6	R1/4
POL 06-03	6	R3/8
POL 08-01	8	R1/8
POL 08-02	8	R1/4
POL 08-03	8	R3/8
POL 08-04	8	R1/2
POL 10-02	10	R1/4
POL 10-03	10	R3/8
POL 10-04	10	R1/2
POL 12-02	12	R1/4
POL 12-03	12	R3/8
POL 12-04	12	R1/2

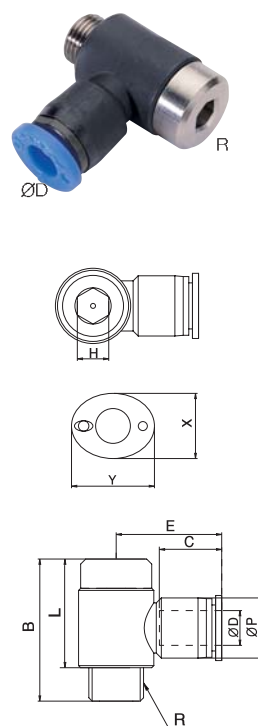
Tube (Inch) - Thread (NPT)

MODEL	ØD	R
POL 5/32-U10U	5/32	UNF10 * 32
POL 5/32-N01U	5/32	NPT1/8
POL 3/16-U10U	3/16	UNF10 * 32
POL 3/16-N01U	3/16	NPT1/8
POL 3/16-N02U	3/16	NPT1/4
POL 3/16-N03U	3/16	NPT3/8
POL 1/4-U10U	1/4	UNF10 * 32
POL 1/4-N01U	1/4	NPT1/8
POL 1/4-N02U	1/4	NPT1/4
POL 1/4-N03U	1/4	NPT3/8
POL 5/16-N01U	5/16	NPT1/8
POL 5/16-N02U	5/16	NPT1/4
POL 5/16-N03U	5/16	NPT3/8
POL 5/16-N04U	5/16	NPT1/2
POL 3/8-N02U	3/8	NPT1/4
POL 3/8-N03U	3/8	NPT3/8
POL 3/8-N04U	3/8	NPT1/2
POL 1/2-N03U	1/2	NPT3/8
POL 1/2-N04U	1/2	NPT1/2

*Rotating body construction after a proper installation.

POL-G

Extended Male Elbow



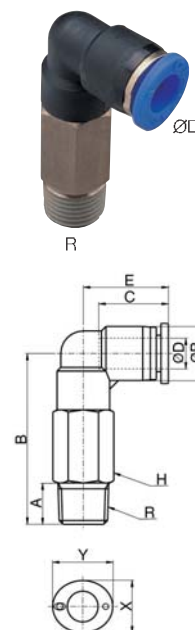
MODEL [ØD-T]

Tube (Metric) - Thread(G)

MODEL	ØD	R
POL 04-G01	4	PF1/8
POL 06-G01	6	PF1/8
POL 06-G02	6	PF1/4
POL 08-G01	8	PF1/8
POL 08-G02	8	PF1/4
POL 08-G03	8	PF3/8
POL 10-G02	8	PF1/4
POL 10-G03	10	PF3/8
POL 12-G03	12	PF3/8
POL 12-G04	12	PF1/2

PLL

Extended Male Elbow



MODEL [ØD-T]

Tube (Metric) - Thread(R)

MODEL	ØD	Rc
PLL 04-M5	4	M5
PLL 04-M6	4	M6
PLL 04-01	4	R1/8
PLL 04-02	4	R1/4
PLL 04-03	4	R3/8
PLL 06-M5	6	M5
PLL 06-M6	6	M6
PLL 06-01	6	R1/8
PLL 06-02	6	R1/4
PLL 06-03	6	R3/8
PLL 08-01	8	R1/8
PLL 08-02	8	R1/4
PLL 08-03	8	R3/8
PLL 08-04	8	R1/2
PLL 10-01	10	R1/8
PLL 10-02	10	R1/4
PLL 10-03	10	R3/8
PLL 10-04	10	R1/2
PLL 12-01	12	R1/8
PLL 12-02	12	R1/4
PLL 12-03	12	R3/8
PLL 12-04	12	R1/2

Tube (Inch) - Thread(R)

MODEL	ØD	R
PLL 5/32-R01	5/32	R1/8
PLL 5/32-R02	5/32	R1/4
PLL 5/32-R03	5/32	R3/8
PLL 3/16-R01	3/16	R1/8
PLL 3/16-R02	3/16	R1/4
PLL 3/16-R03	3/16	R3/8
PLL 1/4-R01	1/4	R1/8
PLL 1/4-R02	1/4	R1/4
PLL 1/4-R03	1/4	R3/8
PLL 5/16-R01	5/16	R1/8
PLL 5/16-R02	5/16	R1/4
PLL 5/16-R03	5/16	R3/8
PLL 5/16-R04	5/16	R1/2
PLL 3/8-R01	3/8	R1/8
PLL 3/8-R02	3/8	R1/4
PLL 3/8-R03	3/8	R3/8
PLL 3/8-R04	3/8	R1/2
PLL 1/2-R01	1/2	R1/8
PLL 1/2-R02	1/2	R1/4
PLL 1/2-R03	1/2	R3/8
PLL 1/2-R04	1/2	R1/2

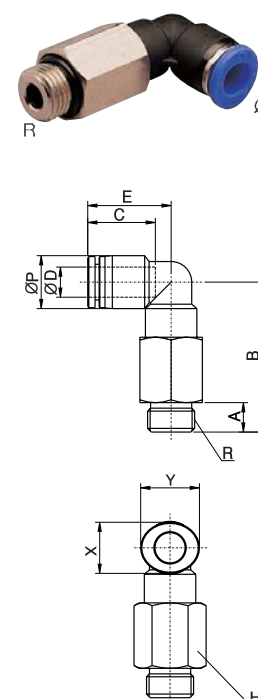
Tube (Inch) - Thread (NPT)

MODEL	ØD	R
PLL 5/32-U10U	5/32	UNF10 * 32
PLL 5/32-N01U	5/32	NPT1/8
PLL 5/32-N02U	5/32	NPT1/4
PLL 5/32-N03U	5/32	NPT3/8
PLL 3/16-N01U	3/16	NPT1/8
PLL 3/16-N02U	3/16	NPT1/4
PLL 3/16-N03U	3/16	NPT3/8
PLL 1/4-U10U	1/4	UNF10 * 32
PLL 1/4-N01U	1/4	NPT1/8
PLL 1/4-N02U	1/4	NPT1/4
PLL 1/4-N03U	1/4	NPT3/8
PLL 5/16-N01U	5/16	NPT1/8
PLL 5/16-N02U	5/16	NPT1/4
PLL 5/16-N03U	5/16	NPT3/8
PLL 5/16-N04U	5/16	NPT1/2
PLL 3/8-N01U	3/8	NPT1/8
PLL 3/8-N02U	3/8	NPT1/4
PLL 3/8-N03U	3/8	NPT3/8
PLL 3/8-N04U	3/8	NPT1/2
PLL 1/2-N02U	1/2	NPT1/4
PLL 1/2-N03U	1/2	NPT3/8
PLL 1/2-N04U	1/2	NPT1/2

*Hexagonal wrench may be used for a proper tightening.

PLL-G

Extended Male Elbow



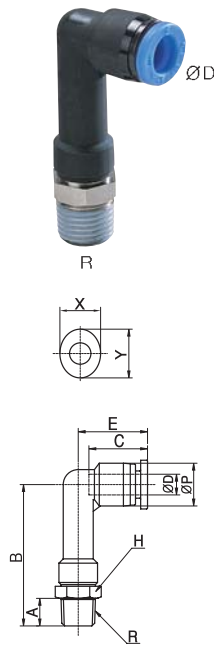
MODEL [ØD-T]

Tube (Metric) - Thread(G)

MODEL	ØD	R
PLL 04-G01	4	G1/8
PLL 04-G02	4	G1/4
PLL 04-G03	4	G3/8
PLL 06-G01	6	G1/8
PLL 06-G02	6	G1/4
PLL 06-G03	6	G3/8
PLL 06-G04	6	G1/2
PLL 08-G01	8	G1/8
PLL 08-G02	8	G1/4
PLL 08-G03	8	G3/8
PLL 08-G04	8	G1/2
PLL 10-G01	10	G1/8
PLL 10-G02	10	G1/4
PLL 10-G03	10	G3/8
PLL 10-G04	10	G1/2
PLL 12-G01	12	G1/8
PLL 12-G02	12	G1/4
PLL 12-G03	12	G3/8
PLL 12-G04	12	G1/2
PLL 16-G04	16	G1/2

PLLP

Union Straight



MODEL [ØD-T]

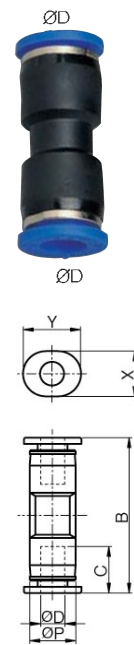
Tube (Metric) - Thread(R)		
MODEL	ØD	R
PLLP 04-M5	4	M5
PLLP 04-M6	4	M6
PLLP 04-01	4	PT1/8
PLLP 04-02	4	PT1/4
PLLP 04-03	4	PT3/8
PLLP 06-M5	6	M5
PLLP 06-M6	6	M6
PLLP 06-01	6	PT1/8
PLLP 06-02	6	PT1/4
PLLP 06-03	6	PT3/8
PLLP 06-04	6	PT1/2
PLLP 08-01	8	PT1/8
PLLP 08-02	8	PT1/4
PLLP 08-03	8	PT3/8
PLLP 08-04	8	PT1/2
PLLP 10-01	10	PT1/8
PLLP 10-02	10	PT1/4
PLLP 10-03	10	PT3/8
PLLP 10-04	10	PT1/2
PLLP 12-01	12	PT1/8
PLLP 12-02	12	PT1/4
PLLP 12-03	12	PT3/8
PLLP 12-04	12	PT1/2

Tube (Inch) - Thread(R)		
MODEL	ØD	R
PLLP 5/32-R01	5/32	PT1/8
PLLP 5/32-R02	5/32	PT1/4
PLLP 5/32-R03	5/32	PT3/8
PLLP 1/4-R01	1/4	PT1/8
PLLP 1/4-R02	1/4	PT1/4
PLLP 1/4-R03	1/4	PT3/8
PLLP 1/4-R04	1/4	PT1/2
PLLP 5/16-R01	5/16	PT1/8
PLLP 5/16-R02	5/16	PT1/4
PLLP 5/16-R03	5/16	PT3/8
PLLP 5/16-R04	5/16	PT1/2
PLLP 3/8-R01	3/8	PT1/8
PLLP 3/8-R02	3/8	PT1/4
PLLP 3/8-R03	3/8	PT3/8
PLLP 3/8-R04	3/8	PT1/2
PLLP 1/2-R01	1/2	PT1/8
PLLP 1/2-R02	1/2	PT1/4
PLLP 1/2-R03	1/2	PT3/8
PLLP 1/2-R04	1/2	PT1/2

Tube (Inch) - Thread (NPT)		
MODEL	ØD	R
PLLP 5/32-U10	5/32	U10U
PLLP 5/32-N01	5/32	NPT1/8
PLLP 5/32-N02	5/32	NPT1/4
PLLP 5/32-N03	5/32	NPT3/8
PLLP 1/4-U10	1/4	U10U
PLLP 1/4-N01	1/4	NPT1/8
PLLP 1/4-N02	1/4	NPT1/4
PLLP 1/4-N03	1/4	NPT3/8
PLLP 1/4-N04	1/4	NPT1/2
PLLP 5/16-N01	5/16	NPT1/8
PLLP 5/16-N02	5/16	NPT1/4
PLLP 5/16-N03	5/16	NPT3/8
PLLP 5/16-N04	5/16	NPT1/2
PLLP 3/8-N01	3/8	NPT1/8
PLLP 3/8-N02	3/8	NPT1/4
PLLP 3/8-N03	3/8	NPT3/8
PLLP 3/8-N04	3/8	NPT1/2
PLLP 1/2-N02	1/2	NPT1/4
PLLP 1/2-N03	1/2	NPT3/8
PLLP 1/2-N04	1/2	NPT1/2

PUC

Union Straight



MODEL [ØD-T]

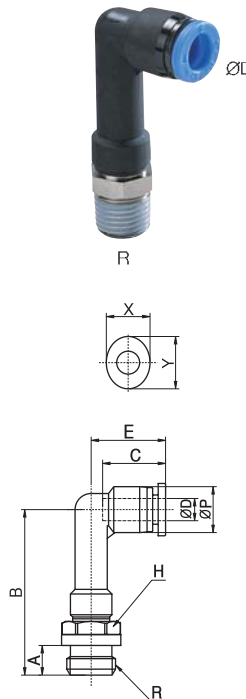
Tube (Metric) - Thread(R)	
MODEL	ØD
PUC 04	4
PUC 06	6
PUC 08	8
PUC 10	10
PUC 12	12
PUC 16	16

Tube (Inch) - Thread(R)	
MODEL	ØD
PUC 5/32	5/32
PUC 3/16	3/16
PUC 1/4	1/4
PUC 5/16	5/16
PUC 3/8	3/8
PUC 1/2	1/2

Tube (Inch) - Thread (NPT)	
MODEL	ØD
PUC 5/32	5/32
PUC 3/16	3/16
PUC 1/4	1/4
PUC 5/16	5/16
PUC 3/8	3/8
PUC 1/2	1/2

PLLP-G

Extended Male Elbow

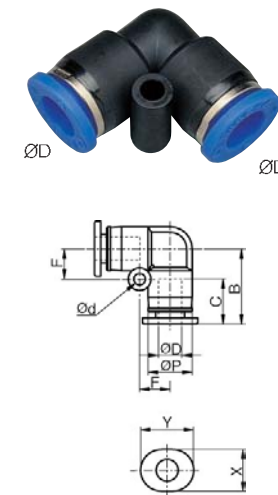


MODEL [ØD-T]

Tube (Metric) - Thread(G)		
MODEL	ØD	R
PLLP 04-G01	4	G1/8
PLLP 04-G02	4	G1/4
PLLP 04-G03	4	G3/8
PLLP 06-G01	6	G1/8
PLLP 06-G02	6	G1/4
PLLP 06-G03	6	G3/8
PLLP 06-G04	6	G1/2
PLLP 08-G01	8	G1/8
PLLP 08-G02	8	G1/4
PLLP 08-G03	8	G3/8
PLLP 08-G04	8	G1/2
PLLP 10-G01	10	G1/8
PLLP 10-G02	10	G1/4
PLLP 10-G03	10	G3/8
PLLP 10-G04	10	G1/2
PLLP 12-G01	12	G1/8
PLLP 12-G02	12	G1/4
PLLP 12-G03	12	G3/8
PLLP 12-G04	12	G1/2

PUL

Union Elbow



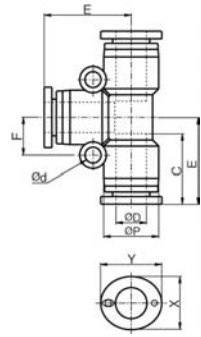
MODEL [ØD-T]

Tube (Metric) - Thread(R)	
MODEL	ØD
PUL 04	4
PUL 06	6
PUL 08	8
PUL 10	10
PUL 12	12
PUL 16	16

Tube (Inch) - Thread(R)	
MODEL	ØD
PUL 5/32	5/32
PUL 3/16	3/16
PUL 1/4	1/4
PUL 5/16	5/16
PUL 3/8	3/8
PUL 1/2	1/2

PUT

Union Tee



MODEL [ØD-T]

Tube (Metric) - Thread(R)

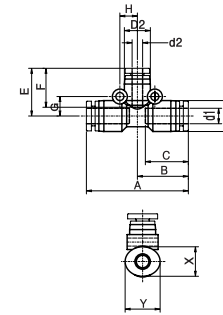
MODEL	ØD
PUT 04	4
PUT 06	6
PUT 08	8
PUT 10	10
PUT 12	12
PUT 16	16

Tube (Inch) - Thread(R)

MODEL	ØD
PUT 5/32	5/32
PUT 3/16	3/16
PUT 1/4	1/4
PUT 5/16	5/16
PUT 3/8	3/8
PUT 1/2	1/2

PUG

Different Dia of Union Tee



MODEL [ØD-T]

Tube (Metric) - Thread(R)

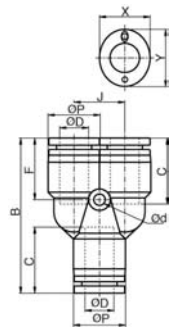
MODEL	ØD1	ØD2
PUG 06-04	6	4
PUG 08-04	8	4
PUG 08-06	8	6
PUG 10-06	10	6
PUG 10-08	10	8
PUG 12-08	12	8
PUG 12-10	12	10

Tube (Inch) - Thread (NPT)

MODEL	ØD1	ØD2
PUG 1/4-5/32	1/4	5/32
PUG 5/16-5/32	5/16	5/32
PUG 5/16-1/4	5/16	1/4
PUG 3/8-1/4	3/8	1/4
PUG 3/8-5/16	3/8	5/16
PUG 1/2-5/16	1/2	5/16
PUG 1/2-3/8	1/2	3/8

PY

Union Y



MODEL [ØD-T]

Tube (Metric) - Thread(R)

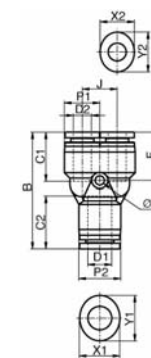
MODEL	ØD
PY 04	4
PY 06	6
PY 08	8
PY 10	10
PY 12	12

Tube (Inch) - Thread(R)

MODEL	ØD
PY 5/32	5/32
PY 3/16	3/16
PY 1/4	1/4
PY 5/16	5/16
PY 3/8	3/8
PY 1/2	1/2

PW

Reducer Y



MODEL [ØD-T]

Tube (Metric) - Thread(R)

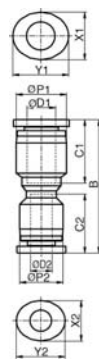
MODEL	ØD1	ØD2
PW 06-04	6	4
PW 08-04	8	4
PW 08-06	8	6
PW 10-06	10	6
PW 10-08	10	8
PW 12-08	12	8
PW 12-10	12	10

Tube (Inch) - Thread (NPT)

MODEL	ØD1	ØD2
PW 3/16-5/32	3/16	5/32
PW 1/4-5/32	1/4	5/32
PW 1/4-3/16	1/4	3/16
PW 5/16-5/32	5/16	5/32
PW 5/16-1/4	5/16	1/4
PW 3/8-1/4	3/8	1/4
PW 3/8-5/16	3/8	5/16
PW 1/2-5/16	1/2	5/16
PW 1/2-3/8	1/2	3/8

PG

Reducer



MODEL [ØD-T]

Tube (Metric) - Thread(R)

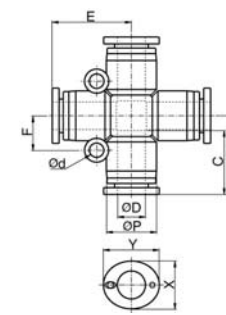
MODEL	ØD1	ØD2
PG 06-04	6	4
PG 08-04	8	4
PG 08-06	8	6
PG 10-06	10	6
PG 10-08	10	8
PG 12-08	12	8
PG 12-10	12	10
PG 16-12	16	12

Tube (Inch) - Thread (NPT)

MODEL	ØD1	ØD2
PG 3/16-5/32	3/16	5/32
PG 1/4-5/32	1/4	5/32
PG 1/4-3/16	1/4	3/16
PG 5/16-5/32	5/16	5/32
PG 5/16-1/4	5/16	1/4
PG 3/8-1/4	3/8	1/4
PG 3/8-5/16	3/8	5/16
PG 1/2-5/16	1/2	5/16
PG 1/2-3/8	1/2	3/8

PZA

Union Cross



MODEL [ØD-T]

Tube (Metric) - Thread(R)

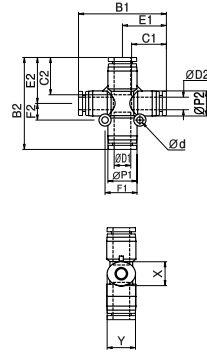
MODEL	ØD
PZA 04	4
PZA 06	6
PZA 08	8
PZA 10	10
PZA 12	12

Tube (Inch) - Thread (NPT)

MODEL	ØD
PZA 5/32	5/32
PZA 3/16	3/16
PZA 1/4	1/4
PZA 5/16	5/16
PZA 3/8	3/8
PZA 1/2	1/2

PZA22

Different Dia of Union Cross(2/2)



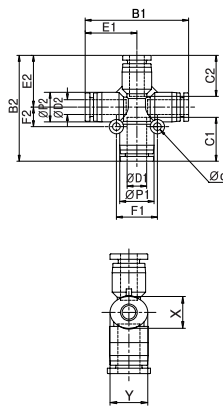
MODEL [ØD-T]

Tube (Metric) - Thread(R)			
MODEL	ØD1	ØD2	
PZA22 08-06	8	6	
PZA22 10-08	10	8	
PZA22 12-10	12	10	

Tube (Inch) - Thread (NPT)			
MODEL	ØD1	ØD2	
PZA22 5/16-1/4	5/16	1/4	
PZA22 3/8-5/16	3/8	5/16	
PZA22 1/2-3/8	1/2	3/8	

PZA31

Different Dia of Union Cross(3/1)



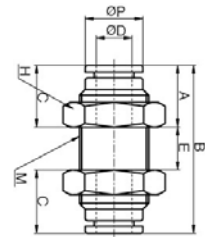
MODEL [ØD-T]

Tube (Metric) - Thread(R)			
MODEL	ØD1	ØD2	
PZA31 08-06	8	6	
PZA31 10-08	10	8	
PZA31 12-10	12	10	

Tube (Inch) - Thread (NPT)			
MODEL	ØD1	ØD2	
PZA31 5/16-1/4	5/16	1/4	
PZA31 3/8-5/16	3/8	5/16	
PZA31 1/2-3/8	1/2	3/8	

PMM

Bulkhead Union



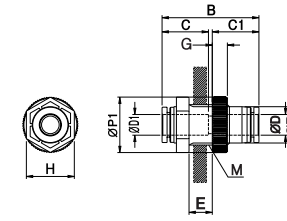
MODEL [ØD-T]

Tube (Metric) - Thread(R)		
MODEL	ØD	
PMM 04	4	
PMM 06	6	
PMM 08	8	
PMM 10	10	
PMM 12	12	

Tube (Metric) - Thread(R)		
MODEL	ØD	
PMM 5/32	5/32	
PMM 3/16	3/16	
PMM 1/4	1/4	
PMM 5/16	5/16	
PMM 3/8	3/8	
PMM 1/2	1/2	

PPM

Bulkhead Union P



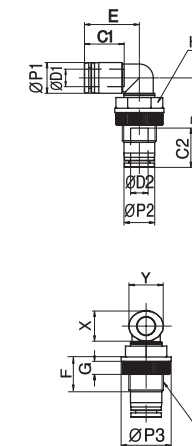
MODEL [ØD-T]

Tube (Metric) - Thread(R)		
MODEL	ØD	
PPM 04	4	
PPM 06	6	
PPM 08	8	
PPM 10	10	
PPM 12	12	

Tube (Metric) - Thread(R)		
MODEL	ØD	
PPM 3/16	3/16	
PPM 1/4	1/4	
PPM 3/8	3/8	
PPM 1/2	1/2	

PLM

Bulkhead Union P



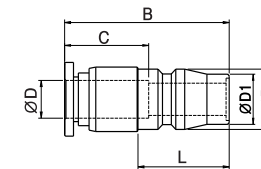
MODEL [ØD-T]

Tube (Metric) - Thread(R)		
MODEL	ØD	
PLM 04	4	
PLM 06	6	
PLM 08	8	
PLM 10	10	
PLM 12	12	

Tube (Metric) - Thread(R)		
MODEL	ØD	
PLM 3/16	3/16	
PLM 1/4	1/4	
PLM 3/8	3/8	
PLM 1/2	1/2	

PCP

Straight Ace Coupler Plug

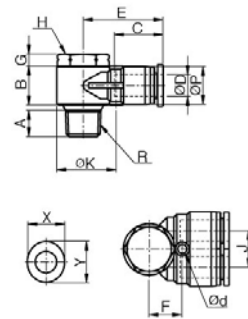


MODEL [ØD-T]

Tube (Metric) - Thread(R)		
MODEL	ØD	
PCP 04	4	
PCP 06	6	
PCP 08	8	
PCP 10	10	
PCP 12	12	
PCP 16	16	

PA

Dual Male Banjo



MODEL [ØD-T]

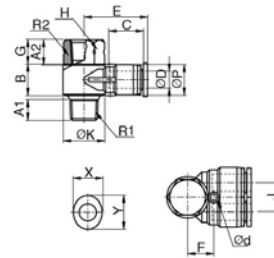
Tube (Metric) - Thread(R)				
MODEL	ØD	R	ØP	
PA 04-M5	4	M5	10.4	
PA 06-01	6	R1/8	12.4	
PA 08-02	8	R1/4	14.4	
PA 10-02	10	R1/4	17.6	
PA 10-03	12	R3/8	17.6	
PA 12-04	16	R1/2	21	

Tube (Inch) - Thread (NPT)				
MODEL	ØD	R	ØP	
PA 5/32-U10U	5/32	UNF10 *32	10	
PA 3/16-N01U	3/16	NPT1/8	12.5	
PA 1/4-N01U	1/4	NPT1/8	14.4	
PA 5/16-N02U	5/16	NPT1/4	18	
PA 3/8-N03U	3/8	NPT3/8	21	
PA 1/2-N04U	1/2	NPT1/2	21	

*Rotating body construction after a proper installation.

PAF

Dual Female Banjo



MODEL [ØD-T]

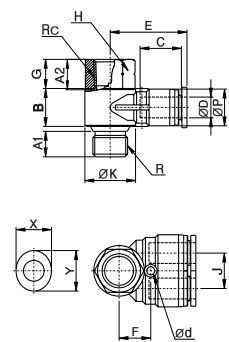
Tube (Metric) - Thread(R)				
MODEL	ØD	R	Fc	
PAF 04-M5	4	M5	M5	
PAF 06-01	6	R1/8	R1/8	
PAF 08-02	8	R1/4	R1/4	
PAF 10-03	10	R3/8	R3/8	
PAF 12-04	12	R1/2	R1/2	

Tube (Inch) - Thread (NPT)				
MODEL	ØD	R	Fc	
PAF 5/32-U10U	5/32	UNF10 *32	UNF10 *32	
PAF 3/16-N01U	3/16	NPT1/8	NPT1/8	
PAF 1/4-N01U	1/4	NPT1/8	NPT1/8	
PAF 5/16-N02U	5/16	NPT1/4	NPT1/4	
PAF 3/8-N03U	3/8	NPT3/8	NPT3/8	
PAF 1/2-N04U	1/2	NPT1/2	NPT1/2	

*Rotating body construction after a proper installation.

PAF-G

Dual Female Banjo

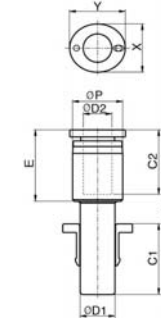


Tube (Metric) - Thread(G)

MODEL	ØD	R	Fc	
PAF 06-G01	6	G1/8	G1/8	
PAF 08-G02	8	G1/4	G1/4	
PAF 10-G03	10	G3/8	G3/8	
PAF 12-G04	12	G1/2	G1/2	

PGJ

Plug-In Reducer



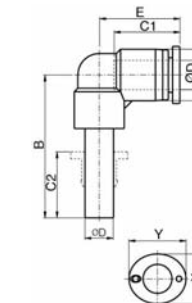
MODEL [ØD-T]

Tube (Metric) - Thread(R)			
MODEL	ØD1	ØD2	
PGJ 06-04	6	4	
PGJ 08-04	8	4	
PGJ 08-06	8	6	
PGJ 10-06	10	6	
PGJ 10-08	10	8	
PGJ 12-06	12	6	
PGJ 12-08	12	8	
PGJ 12-10	12	10	

Tube (Inch) - Thread (NPT)			
MODEL	ØD1	ØD2	
PGJ 1/4-5/32	1/4	5/32	
PGJ 5/16-5/32	5/16	5/32	
PGJ 5/16-1/4	5/16	1/4	
PGJ 3/8-1/4	3/8	1/4	
PGJ 3/8-5/16	3/8	5/16	
PGJ 1/2-1/4	1/2	1/4	
PGJ 1/2-5/16	1/2	5/16	
PGJ 1/2-3/8	1/2	3/8	

PLJ

Plug-In Elbow



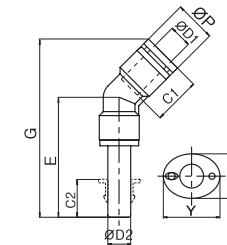
MODEL [ØD-T]

Tube (Metric) - Thread(R)		
MODEL	ØD	
PLJ 04	4	
PLJ 06	6	
PLJ 08	8	
PLJ 10	10	
PLJ 12	12	
PLJ 16	16	

Tube (Inch) - Thread (NPT)		
MODEL	ØD	
PLJ 5/32	5/32	
PLJ 3/16	3/16	
PLJ 1/4	1/4	
PLJ 5/16	5/16	
PLJ 3/8	3/8	
PLJ 1/2	1/2	

PLJ45

Plug-In Extended Elbow



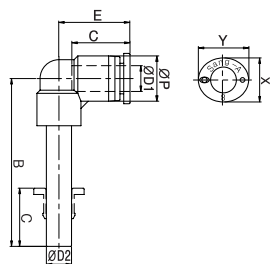
MODEL [ØD-T]

Tube (Metric) - Thread(R)		
MODEL	ØD1	
PLJ45 04	4	
PLJ45 06	6	
PLJ45 08	8	
PLJ45 10	10	
PLJ45 12	12	

Tube (Inch) - Thread (NPT)		
MODEL	ØD1	
PLJ45 5/32	5/32	
PLJ45 3/16	3/16	
PLJ45 1/4	1/4	
PLJ45 5/16	5/16	
PLJ45 3/8	3/8	
PLJ45 1/2	1/2	

PLLJ

Plug-In Extended Elbow



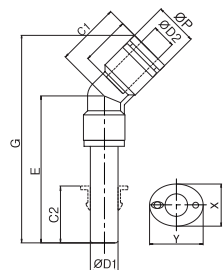
MODEL [ØD-T]

Tube (Metric) - Thread(R)	
MODEL	ØD
PLLJ 04	4
PLLJ 06	6
PLLJ 08	8
PLLJ 10	10
PLLJ 12	12
PLLJ 16	16

Tube (Inch) - Thread (NPT)	
MODEL	ØD
PLLJ 5/32	5/32
PLLJ 3/16	3/16
PLLJ 1/4	1/4
PLLJ 5/16	5/16
PLLJ 3/8	3/8
PLLJ 1/2	1/2

PLGJ45

Plug-In Reducer Elbow



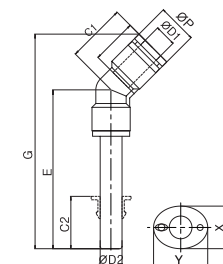
MODEL [ØD-T]

Tube (Metric) - Thread(R)		
MODEL	ØD1	ØD2
PLGJ45 06-04	6	4
PLGJ45 08-06	8	6
PLGJ45 10-08	10	8
PLGJ45 12-10	12	10

Tube (Inch) - Thread (NPT)		
MODEL	ØD1	ØD2
PLGJ45 3/16-5/32	3/16	5/32
PLGJ45 1/4-5/32	1/4	5/32
PLGJ45 1/4-3/16	1/4	3/16
PLGJ45 5/16-1/4	5/16	1/4
PLGJ45 3/8-5/16	3/8	5/16
PLGJ45 1/2-3/8	1/2	3/8

PLLJ45

Plug-In Reducer Elbow



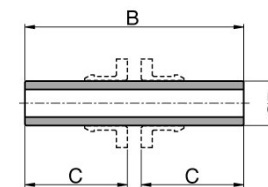
MODEL [ØD-T]

Tube (Metric) - Thread(R)	
MODEL	ØD1
PLLJ45 04	4
PLLJ45 06	6
PLLJ45 08	8
PLLJ45 10	10
PLLJ45 12	12

Tube (Inch) - Thread (NPT)	
MODEL	ØD1
PLLJ45 5/32	5/32
PLLJ45 3/16	3/16
PLLJ45 1/4	1/4
PLLJ45 5/16	5/16
PLLJ45 3/8	3/8
PLLJ45 1/2	1/2

PIJ

Tube Splicer



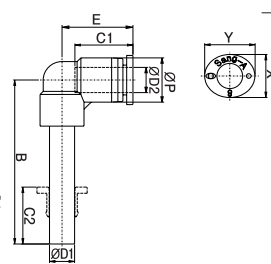
MODEL [ØD-T]

Tube (Metric) - Thread(R)	
MODEL	ØD
PIJ 04	4
PIJ 06	6
PIJ 08	8
PIJ 10	10
PIJ 12	12
PIJ 16	16

Tube (Metric) - Thread(R)	
MODEL	ØD
PIJ 5/32	5/32
PIJ 3/16	3/16
PIJ 1/4	1/4
PIJ 5/16	5/16
PIJ 3/8	3/8
PIJ 1/2	1/2

PLGJ

Plug-In Reducer Elbow



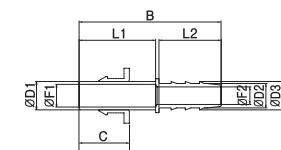
MODEL [ØD-T]

Tube (Metric) - Thread(R)		
MODEL	ØD1	ØD2
PLGJ 06-04	6	4
PLGJ 08-06	8	6
PLGJ 10-08	10	8
PLGJ 12-10	12	10

Tube (Inch) - Thread (NPT)		
MODEL	ØD1	ØD2
PLGJ 3/16-5/32	3/16	5/32
PLGJ 1/4-5/32	1/4	5/32
PLGJ 1/4-3/16	1/4	3/16
PLGJ 5/16-1/4	5/16	1/4
PLGJ 3/8-5/16	3/8	5/16
PLGJ 1/2-3/8	1/2	3/8

PJH

Plug-In Extended Elbow

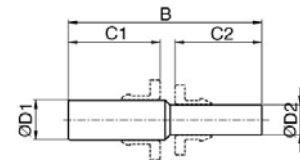


MODEL [ØD-T]

Tube (Metric) - Thread(R)		
MODEL	ØD1	ØD2
PJH 04-04	4	4.8
PJH 04-05	4	6
PJH 06-05	6	5.9
PJH 06-06	6	6.8
PJH 08-06	8	6.8
PJH 08-08	8	8.6
PJH 10-08	10	8.6
PJH 12-08	12	8.6
PJH 12-10	12	10.6
PJH 12-13	12	13.5
PJH 14-14	14	14.7
PJH 04-1/8	4	3.8
PJH 08-1/4	8	7.3
PJH 10-1/4	10	7.3
PJH 12-1/2	12	13.2
PJH 14-1/2	14	13.2

PIG

Reducer Tube Splicer



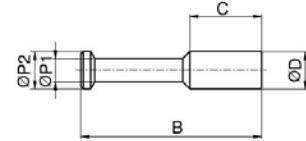
MODEL [ØD-T]

Tube (Metric) - Thread(R)			
MODEL	ØD1	ØD2	
PIG 06-04	6	4	
PIG 08-04	8	4	
PIG 08-06	8	6	
PIG 10-06	10	6	
PIG 10-08	10	8	
PIG 12-08	12	8	
PIG 12-10	12	10	
PIG 16-12	16	12	

Tube (Metric) - Thread(R)			
MODEL	ØD	ØD2	
PIG 3/16-5/32	3/16	5/32	
PIG 1/4-3/16	1/4	3/16	
PIG 1/4-5/32	1/4	5/32	
PIG 5/16-5/32	5/16	5/32	
PIG 5/16-1/4	5/16	1/4	
PIG 3/8-1/4	3/8	1/4	
PIG 3/8-5/16	3/8	5/16	
PIG 1/2-5/16	1/2	5/16	
PIG 1/2-3/8	1/2	3/8	

PP

Plug



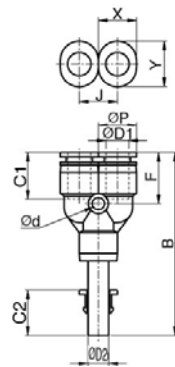
MODEL [ØD-T]

Tube (Metric) - Thread(R)	
MODEL	ØD
PP 04	4
PP 06	6
PP 08	8
PP 10	10
PP 12	12
PP 16	16

Tube (Metric) - Thread(R)	
MODEL	ØD
PP 5/32	5/32
PP 3/16	3/16
PP 1/4	1/4
PP 5/16	5/16
PP 3/8	3/8
PP 1/2	1/2

PYJ

Plug-In Y



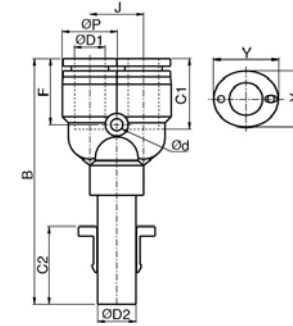
MODEL [ØD-T]

Tube (Metric) - Thread(R)	
MODEL	ØD
PYJ 04	4
PYJ 06	6
PYJ 08	8
PYJ 10	10
PYJ 12	12

Tube (Inch) - Thread (NPT)	
MODEL	ØD
PYJ 5/32	5/32
PYJ 3/16	3/16
PYJ 1/4	1/4
PYJ 5/16	5/16
PYJ 3/8	3/8
PYJ 1/2	1/2

PWJ

Plug-In Reducer Y



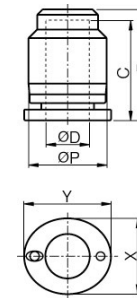
MODEL [ØD-T]

Tube (Metric) - Thread(R)			
MODEL	ØD1	ØD2	
PWJ 06-04	6	4	
PWJ 08-06	8	6	
PWJ 10-08	10	8	
PWJ 12-10	12	10	

Tube (Inch) - Thread (NPT)			
MODEL	ØD1	ØD2	
PWJ 1/4-5/32	1/4	5/32	
PWJ 5/16-1/4	5/16	1/4	
PWJ 3/8-5/16	3/8	5/16	
PWJ 1/2-3/8	1/2	3/8	

PPF

Cap



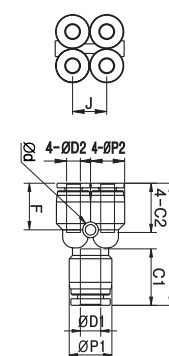
MODEL [ØD-T]

Tube (Metric) - Thread(R)	
MODEL	ØD
PPF 04	4
PPF 06	6
PPF 08	8
PPF 10	10
PPF 12	12

Tube (Metric) - Thread(R)	
MODEL	ØD
PPF 5/32	5/32
PPF 3/16	3/16
PPF 1/4	1/4
PPF 5/16	5/16
PPF 3/8	3/8
PPF 1/2	1/2

PXG

Reducer Double Y Union



MODEL [ØD-T]

Tube (Metric) - Thread(R)			
MODEL	ØD1	ØD2	
PXG 06-04	6	4	
PXG 08-06	8	6	

Tube (Inch) - Thread (NPT)			
MODEL	ØD1	ØD2	
PXG 1/4-5/32	1/4	5/32	
PXG 5/16-1/4	5/16	1/4	

PXJ

Reducer Double Y



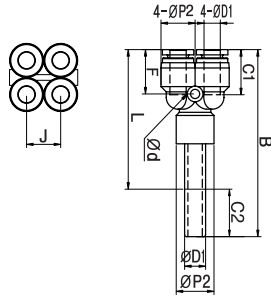
MODEL [ØD-T]

Tube (Metric) - Thread(R)

MODEL	ØD1	ØD2
PXJ 06-04	6	4
PXJ 08-06	8	6

Tube (Inch) - Thread (NPT)

MODEL	ØD1	ØD2
PXJ 1/4-5/32	1/4	5/32
PXJ 5/16-1/4	5/16	1/4



PXT

Male Double Y



MODEL [ØD-T]

Tube (Metric) - Thread(R)

MODEL	ØD	R
PXT 04-01	4	R1/8
PXT 04-02	4	R1/4
PXT 06-01	6	R1/8
PXT 06-02	6	R1/4

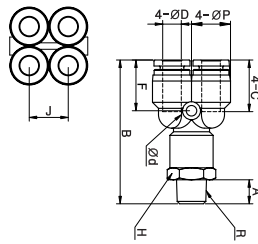
Tube (Inch) - Thread(R)

MODEL	ØD	R
PXT 1/4- R01	1/4	R1/8
PXT 1/4- R02	1/4	R1/4

Tube (Inch) - Thread (NPT)

MODEL	ØD	R
PXT 5/32-N01	5/32	NPT1/8
PXT 5/32-N02	5/32	NPT1/4
PXT 1/4-N01	1/4	NPT1/8
PXT 1/4-N02	1/4	NPT1/4

*Rotating body construction after a proper installation.



PXT-G

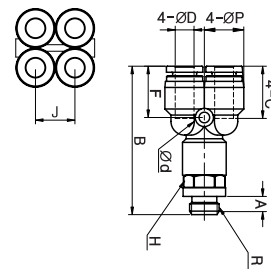
Male Double Y



MODEL [ØD-T]

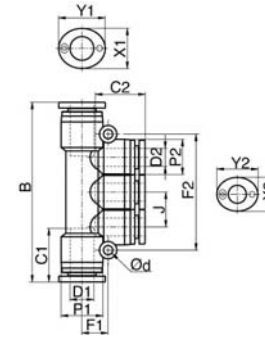
Tube (Metric) - Thread(G)

MODEL	ØD	R
PXT 04-G01	4	G1/8
PXT 04-G02	4	G1/4
PXT 06-G01	6	G1/8
PXT 06-G02	6	G1/4



PKG

Reducer Triple Branch Union



MODEL [ØD-T]

Tube (Metric) - Thread(R)

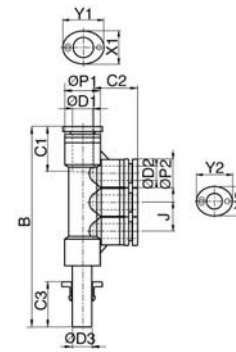
MODEL	ØD1	ØD2
PKG 06-04	6	4
PKG 08-04	8	4
PKG 08-06	8	6
PKG 10-06	10	6
PKG 10-08	10	8

Tube (Inch) - Thread (NPT)

MODEL	ØD1	ØD2
PKG 3/16-5/32	3/16	5/32
PKG 5/16-5/32	5/16	5/32
PKG 5/16-3/16	5/16	3/16
PKG 5/16-1/4	5/16	1/4
PKG 3/8-1/4	3/8	1/4
PKG 3/8-5/16	3/8	5/16

PKJ

Plug-In Reducer Triple Branch



MODEL [ØD-T]

Tube (Metric) - Thread(R)

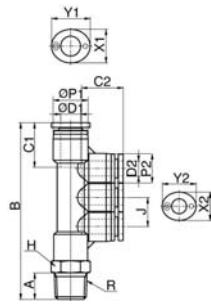
MODEL	ØD1	ØD2	ØD3
PKJ 06-04	6	4	6
PKJ 08-04	8	4	8
PKJ 08-06	8	6	8
PKJ 10-06	10	6	10
PKJ 10-08	10	8	10

Tube (Inch) - Thread (NPT)

MODEL	ØD1	ØD2	ØD3
PKJ 3/16-5/32	3/16	5/32	3/16
PKJ 1/4-5/32	1/4	5/32	1/4
PKJ 5/16-5/32	5/16	5/32	5/16
PKJ 5/16-3/16	5/16	3/16	5/16
PKJ 5/16-1/4	5/16	1/4	5/16
PKJ 3/8-5/16	3/8	5/16	3/8

PKD

Male Reducer Triple Branch



MODEL [ØD-T]

Tube (Metric) - Thread(R)			
MODEL	ØD1	ØD2	R
PKD 06-04-01	6	4	R1/8
PKD 06-04-02	6	4	R1/4
PKD 08-04-02	8	4	R1/4
PKD 08-06-02	8	6	R1/4
PKD 08-06-03	8	6	R3/8
PKD 10-08-03	10	8	R3/8

Tube (Metric) - Thread(R)			
MODEL	ØD1	ØD2	R
PKD 3/16-5/32-R01	3/16	5/32	R1/8
PKD 5/16-5/32-R02	5/16	5/32	R1/4
PKD 5/16-3/16-R02	5/16	3/16	R1/4
PKD 5/16-1/4-R02	5/16	1/4	R1/4
PKD 5/16-1/4-R03	5/16	1/4	R3/8
PKD 3/8-5/16-R03	3/8	5/16	R3/8

Inch (Metric) - Thread(NPT)			
MODEL	ØD1	ØD2	R
PKD 3/16-5/32-N01U	3/16	5/32	NPT1/8
PKD 1/4-5/32-N01U	1/4	5/32	NPT1/8
PKD 1/4-5/32-N02U	1/4	5/32	NPT1/4
PKD 5/16-5/32-N02U	5/16	5/32	NPT1/4
PKD 5/16-3/16-N02U	5/16	3/16	NPT1/4
PKD 5/16-1/4-N02U	5/16	1/4	NPT1/4
PKD 5/16-1/4-N03U	5/16	1/4	NPT3/8
PKD 3/8-5/16-N03U	3/8	5/16	NPT3/8

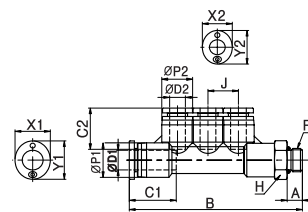
PKD-G

Male Reducer Triple Branch



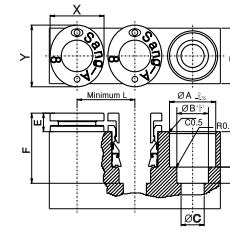
MODEL [ØD-T]

Tube (Metric) - Thread(G)			
MODEL	ØD1	ØD2	R
PKD 06-04-G01	6	4	G1/8
PKD 08-04-G02	8	4	G1/4
PKD 08-06-G02	8	6	G1/4
PKD 10-08-G03	10	8	G3/8



CAS

Insert-Tube



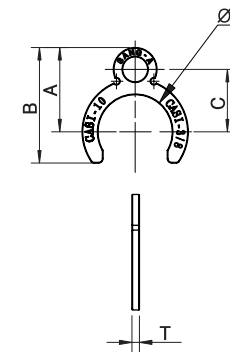
MODEL [ØD-T]

Tube (Metric) - Thread(R)						
MODEL	ØD	ØA	ØB	ØC	H	L
CAS-N04	4	8.1	4.2	2.5	7.8	3.5
CAS-N06	6	10	6.2	4	8.2	4
CAS-N08	8	12	8.2	6	9.2	4.5
CAS-N10	10	15.1	10.2	8	10.2	5
CAS-N12	12	17.7	12.2	10	12.2	5

Inch (Metric) - Thread(NPT)						
MODEL	ØD	ØA	ØB	ØC	H	L
CAS-N5/32	5/32	8	4.2	2.5	7.8	3.5
CAS-N3/16	3/16	8.5	5	4	8.2	4
CAS-N1/4	1/4	10	6.5	5	8.2	4
CAS-N5/16	5/16	12	8.2	6	9.2	4.5
CAS-N3/8	3/8	15.1	9.7	8	10.2	5
CAS-N1/2	1/2	17.7	13	10	12.2	5

CASI

Insert-Tube Clip



MODEL [ØD-T]

Tube (Metric) - Thread(R)	
MODEL	ØD
CASI 04	4
CASI 06	6
CASI 08	8
CASI 10	10
CASI 12	12

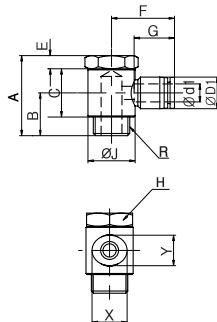
PGL(D1)

Single Universal Elbow



MODEL [ØD-T]

Tube (Metric) - Thread(G)		
MODEL	ØD	R
PGL 04-G01(1)	4	G1/8
PGL 06-G01(1)	6	G1/8
PGL 06-G02(1)	6	G1/4
PGL 08-G01(1)	8	G1/8
PGL 08-G02(1)	8	G1/4
PGL 08-G03(1)	8	G3/8
PGL 10-G02(1)	10	G1/4
PGL 10-G03(1)	10	G3/8
PGL 12-G03(1)	12	G3/8
PGL 12-G04(1)	12	G1/2



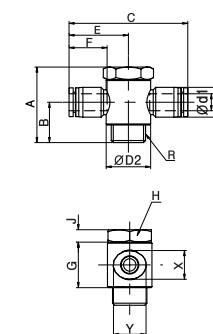
PGT(D1)

Single Universal Elbow



MODEL [ØD-T]

Tube (Metric) - Thread(G)		
MODEL	ØD	R
PGT 04-G01(1)	4	G1/8
PGT 06-G01(1)	6	G1/8
PGT 06-G02(1)	6	G1/4
PGT 08-G01(1)	8	G1/8
PGT 08-G02(1)	8	G1/4
PGT 08-G03(1)	8	G3/8
PGT 10-G02(1)	10	G1/4
PGT 10-G03(1)	10	G3/8
PGT 12-G03(1)	12	G3/8
PGT 12-G04(1)	12	G1/2



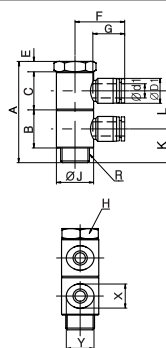
PGL(D2)

Double Universal Elbow



MODEL [ØD-T]

Tube (Metric) - Thread(G)		
MODEL	ØD	R
PGL 04-G01(2)	4	G1/8
PGL 06-G01(2)	6	G1/8
PGL 06-G02(2)	6	G1/4
PGL 08-G01(2)	8	G1/8
PGL 08-G02(2)	8	G1/4
PGL 08-G03(2)	8	G3/8
PGL 10-G02(2)	10	G1/4
PGL 10-G03(2)	10	G3/8
PGL 12-G03(2)	12	G3/8
PGL 12-G04(2)	12	G1/2



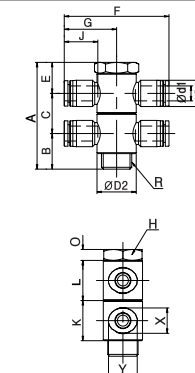
PGT(D2)

Double Universal Tee



MODEL [ØD-T]

Tube (Metric) - Thread(G)		
MODEL	ØD	R
PGT 04-G01(2)	4	G1/8
PGT 06-G01(2)	6	G1/8
PGT 06-G02(2)	6	G1/4
PGT 08-G01(2)	8	G1/8
PGT 08-G02(2)	8	G1/4
PGT 08-G03(2)	8	G3/8
PGT 10-G02(2)	10	G1/4
PGT 10-G03(2)	10	G3/8
PGT 12-G03(2)	12	G3/8
PGT 12-G04(2)	12	G1/2



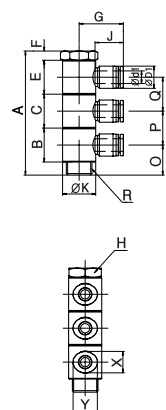
PGL(D3)

Triple Universal Elbow



MODEL [ØD-T]

Tube (Metric) - Thread(G)		
MODEL	ØD	R
PGL 04-G01(3)	4	G1/8
PGL 06-G01(3)	6	G1/8
PGL 06-G02(3)	6	G1/4
PGL 08-G01(3)	8	G1/8
PGL 08-G02(3)	8	G1/4
PGL 08-G03(3)	8	G3/8
PGL 10-G02(3)	10	G1/4
PGL 10-G03(3)	10	G3/8
PGL 12-G03(3)	12	G3/8
PGL 12-G04(3)	12	G1/2



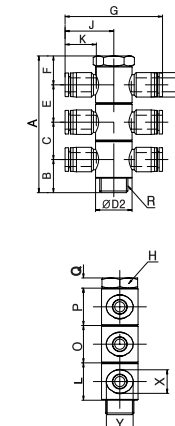
PGT(D3)

Triple Universal Tee



MODEL [ØD-T]

Tube (Metric) - Thread(G)		
MODEL	ØD	R
PGT 04-G01(3)	4	G1/8
PGT 06-G01(3)	6	G1/8
PGT 06-G02(3)	6	G1/4
PGT 08-G01(3)	8	G1/8
PGT 08-G02(3)	8	G1/4
PGT 08-G03(3)	8	G3/8
PGT 10-G02(3)	10	G1/4
PGT 10-G03(3)	10	G3/8
PGT 12-G03(3)	12	G3/8
PGT 12-G04(3)	12	G1/2



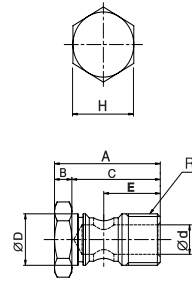
PGB(D1)



MODEL [ØD-T]

Tube (Metric) - Thread(G)

MODEL	R
PGB G01(1)	G1/8
PGB G02(1)	G1/4
PGB G03(1)	G3/8
PGB G04(1)	G1/2



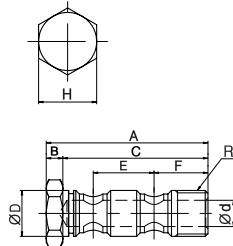
PGB(D2)



MODEL [ØD-T]

Tube (Metric) - Thread(G)

MODEL	R
PGB G01(2)	G1/8
PGB G02(2)	G1/4
PGB G03(2)	G3/8
PGB G04(2)	G1/2



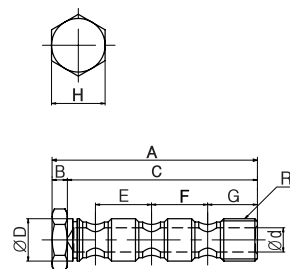
PGB(D3)



MODEL [ØD-T]

Tube (Metric) - Thread(G)

MODEL	R
PGB G01(3)	G1/8
PGB G02(3)	G1/4
PGB G03(3)	G3/8
PGB G04(3)	G1/2



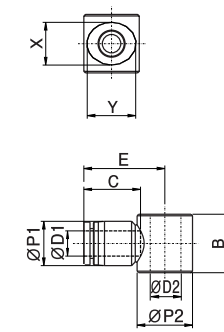
PGL



MODEL [ØD-T]

Tube (Metric) - Thread(G)

MODEL	ØD	R
PGL 04-G01P	4	G1/8
PGL 06-G01P	6	G1/8
PGL 06-G02P	6	G1/4
PGL 08-G01P	8	G1/8
PGL 08-G02P	8	G1/4
PGL 08-G03P	8	G3/8
PGL 10-G02P	10	G1/4
PGL 10-G03P	10	G3/8
PGL 12-G03P	12	G3/8
PGL 12-G04P	12	G1/2



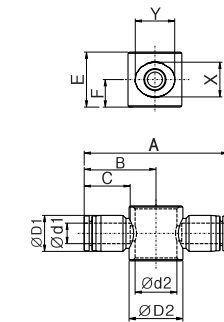
PGT



MODEL [ØD-T]

Tube (Metric) - Thread(G)

MODEL	ØD	R
PGT 04-G01P	4	G1/8
PGT 06-G01P	6	G1/8
PGT 06-G02P	6	G1/4
PGT 08-G01P	8	G1/8
PGT 08-G02P	8	G1/4
PGT 08-G03P	8	G3/8
PGT 10-G02P	10	G1/4
PGT 10-G03P	10	G3/8
PGT 12-G03P	12	G3/8
PGT 12-G04P	12	G1/2



PGO



MODEL [ØD-T]

Tube (Metric) - Thread(G)

MODEL	R
PGO G01	G1/8
PGO G02	G1/4
PGO G03	G3/8
PGO G04	G1/2

