

PNEUMATIC VALVES YPC 3 PORT



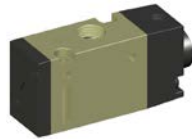
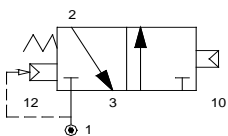
SERIES SFP 2000 (port size 1/8") - technical features -



	MODEL	
	(ASV161) SFP2601	(ASV162) SFP2701
Fluids	compressed air 50 micron, with or without lubrication	
Working pressure	1,5 ÷ 8 bar	
Eff. Sectional Area (mm²)-5 bar	12.6	
Ambient and fluid temperature	from + 5 °C to + 60 °C	
Port size	G 1/8"	
Pilot port size	M5x0.8	

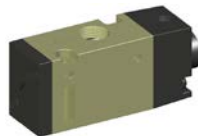
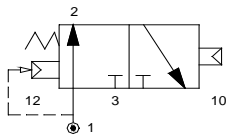
N.C. - Normally closed

SFP2601 3/2 single
(OLD CODE: ASV 161)



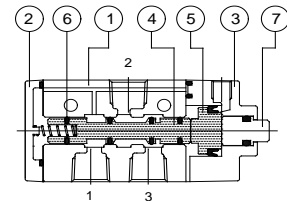
N.A. - Normally open

SFP2701 3/2 single
(OLD CODE: ASV 162)



MATERIAL

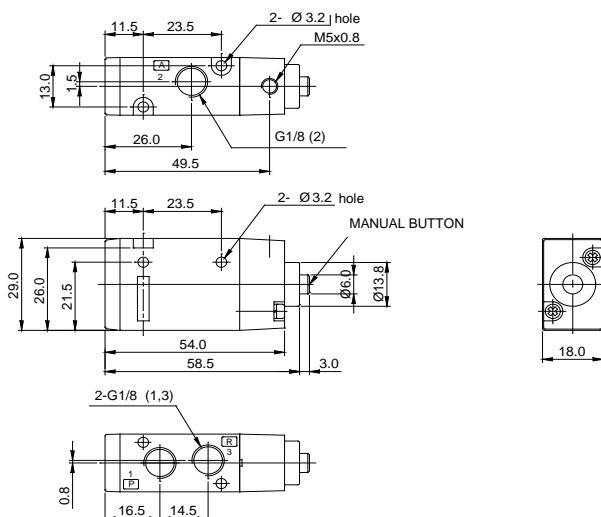
1	Valve body	Aluminium
2	Cap	Die-cast zamak
3	Semipilot	Die-cast zamak
4	Spool	Aluminium
5	Piston	Acetyl Resin (POM)
6	Seals	Nitrile rubber (NBR)
7	Pilot	Anodized Aluminium



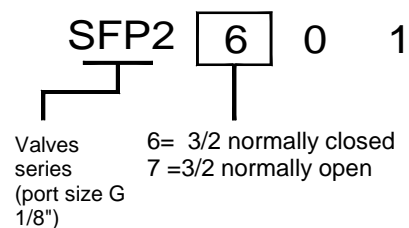
EXAMPLE FOR ORDERING

SFP2601
pneumatic valves SERIES SF2000
3/2 normally closed with 1/8"
return method air+spring

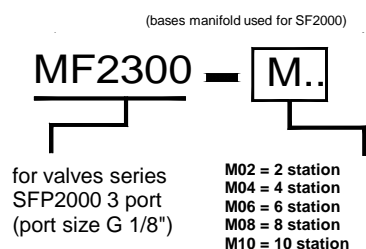
SFP2601 / SFP2701 - DIMENSION



ORDERING NUMBER



ORDERING NUMBER MANIFOLD



PNEUMATIC VALVES YPC 3 PORT

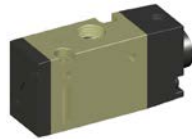
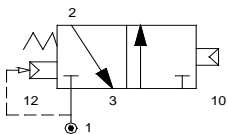
SERIES SFP 4000 (port size 1/4") - technical features -



	MODEL	
	(ASV210) SFP4601	(ASV220) SFP4701
Fluids	compressed air 50 micron, with or without lubrication	
Working pressure	1,5 ÷ 8 bar	
Eff. Sectional Area (mm²)-5 bar	19	
Ambient and fluid temperature	from + 5 °C to + 60 °C	
Port size	G 1/4"	
Pilot port size	G 1/8"	

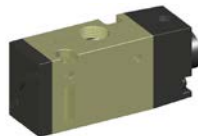
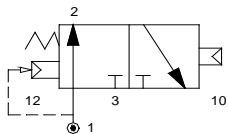
N.C. - Normally closed

SFP4601 3/2 single
(OLD CODE: ASV 210)



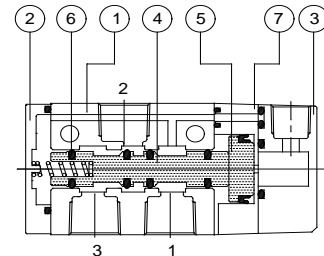
N.A. - Normally open

SFP4701 3/2 single
(OLD CODE: ASV 220)



MATERIAL

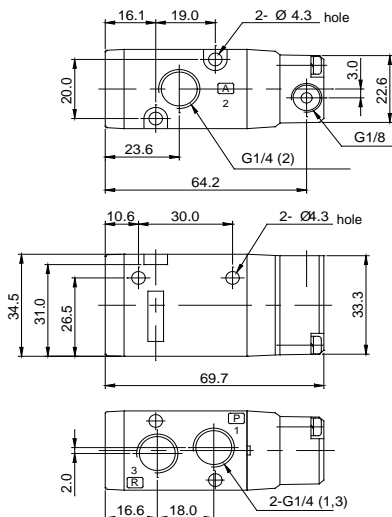
1	Valve body	Aluminium
2	Cap	Die-cast zamak
3	Semipilot	Die-cast zamak
4	Spool	Aluminium
5	Piston	Acetyl Resin (POM)
6	Seals	Nitrile rubber (NBR)
7	Pilot	Anodized Aluminium



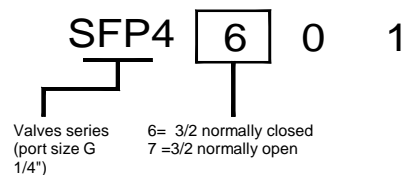
EXAMPLE FOR ORDERING

SFP4601
pneumatic valves SERIES SF4000
3/2 normally closed with 1/4"
return method air+spring

SFP4601 / SFP4701 - DIMENSIONS



ORDERING NUMBER



ORDERING NUMBER MANIFOLD

