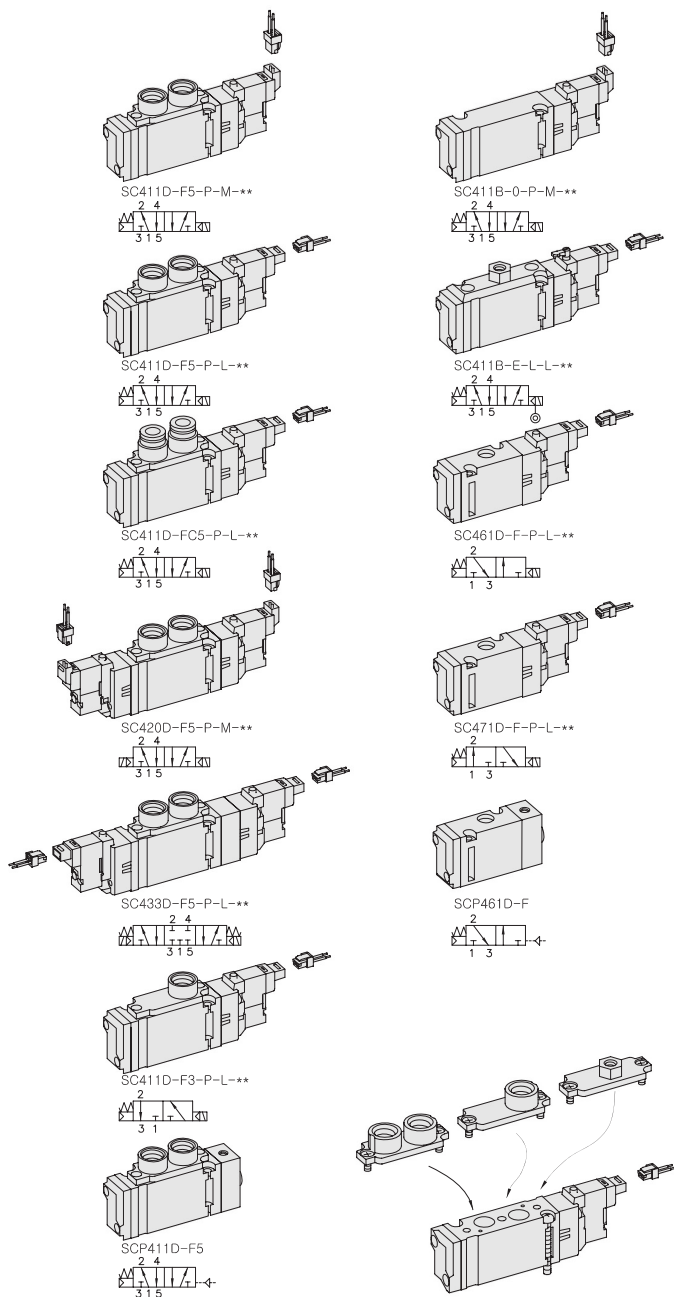


# SC400. 1/4

"C" COMPACT Series  
Solenoid / Pneumatic Valves

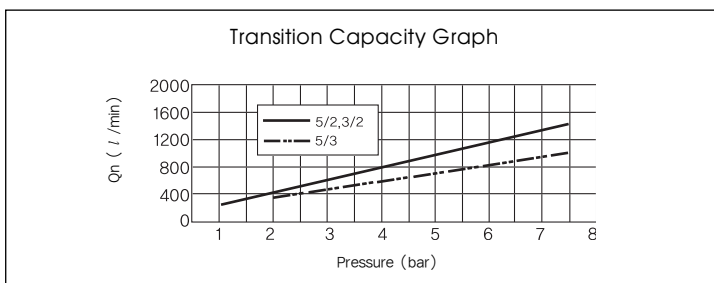
- 5/2, 5/3-1/4, 3/2-1/8 ■ 18mm Body Width
- Manifold or Sub-Base Type
- High Efficiency, Space Economy Type
- Transition Flow 900ℓ/min (5bar)



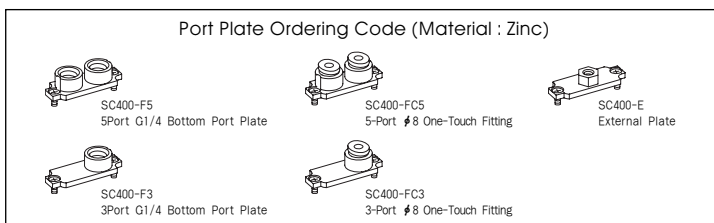
\*\* : Voltage Selection (see page 10)

## SPECIFICATION

ITEM	SERIES	SOLENOID, PNEUMATIC	
		FUNCTION	
		5, 3Port 2Position	5Port 3Position
Fluids		Compressed Air & Inert Gases	
Pressure(bar)		1.5~7.0	2.0~7.0
Eff. Sectional Area(mm <sup>2</sup> )-5bar		16.0	12.0
Ambient & Fluid Temp.		5~60°C (41~140°F)	
Response Time(5bar)		25ms or Less	35ms or Less
Max. Working Frequency		5c/sec	3c/sec
Lubrication		Not Required(Use ISO VG32 #)	
Manual Override		Push Button(Standard), Lever Lock(Option)	
Coil Insulation Class		F-Class or Equivalent	
Permissible Voltage Variation		±10% of Rated Voltage	
Off Min. Residual Voltage		DC:10% or Less	
Power Consumption(DC)		Holding-DC: 0.65W (24V:27.0mA/12V:54.0mA)	



- ### The Material of Parts
- Valve Body : Die-Cast Aluminium
  - Cap : Zinc Pressure Die-Cast
  - Spool : Aluminium
  - Pilot Parts : Glass Filled Nylon
  - Seals : NBR
  - Armature : Stainless Steel
  - Spring : Stainless
  - Armature Seals : Viton



\* The specification on each item can be amended without any prenotice to improve a performance.  
\* The specification on each item can be different from actual specification.

## ORDERING NO.

**SC4 1 1 D - F5 - P - L - D4**

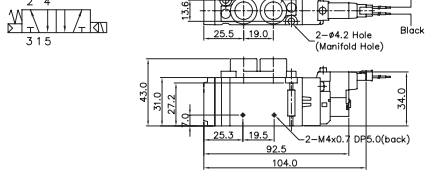
Valve Series	Function	Return Method	Port Type	Port Plate & Thread	Manual Operator	Solenoid Coil Type	Voltage
SC3 : Solenoid Valve	1 5/2 Single	0 None	D Manifold	0 None	0 None	0 None	0 None
	2 5/2 Double	1 Air + Spring	B Sub-Base	F5 5-Port G1/4	P Push	L 90 Degree Plug-in Wire Assembly with LED	D4 DC 24V
	3 5/3 Closed Center	2 Air		F3 3-Port G1/4	Non-Locking		D2 DC 12V
SCP3 : Pneumatic Valve	4 5/3 Open Center	3 Spring		FN5 5-Port NPT1/4	L Lever Locking	M 180 Degree Plug-in Wire Assembly with LED	
	5 5/3 Pressure Center			FN3 3-Port NPT1/4			
	6 3/2 Normally Closed			FC5 5-Port ø8 One-Touch Fitting			
	7 3/2 Normally Open			FC3 3-Port ø8 One-Touch Fitting			
				E External End Plate, Plate M5×0.8			

# Solenoid & Pilot Actuated Spool Valves

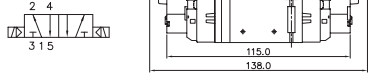
Port Thread 1/4, 1/8

## 5Port 2Position Solenoid Valve (Manifold)

Single Solenoid  
SC411D-F5-P-L-\*\*\*



Double Solenoid  
SC420D-F5-P-L-\*\*\*

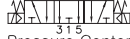


## 5Port 3Position Solenoid Valve (Manifold)

Closed Center  
SC433D-F-P-M-\*\*\*



Exhaust Center  
SC443D-F5-P-M-\*\*\*

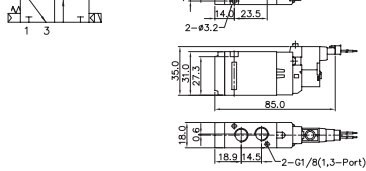


Pressure Center  
SC453D-F5-P-M-\*\*\*



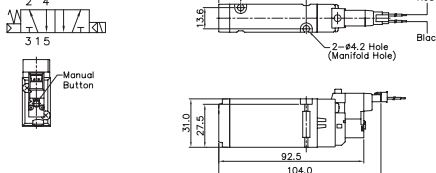
## 3Port 2Position Solenoid Valve (Manifold)

Single Solenoid  
SC461D-F-P-L-\*\*\*

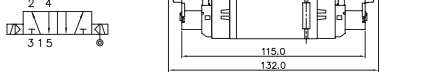


## 5Port 2Position Solenoid Valve (Sub-Base)

Single Solenoid  
SC411B-0-P-L-\*\*\*



Double Solenoid  
External Pilot  
SC420B-E-P-L-\*\*\*

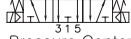


## 5Port 3Position Solenoid Valve (Sub-Base)

Closed Center  
SC433B-0-P-L-\*\*\*



Exhaust Center  
SC443B-0-P-L-\*\*\*

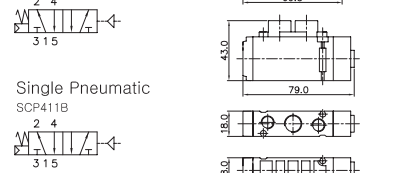


Pressure Center  
SC453B-0-P-L-\*\*\*



## 5Port 2Position Pneumatic Valve

Single Pneumatic  
SCP411D-F5

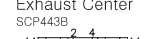


Double Pneumatic  
SCP420D-F5

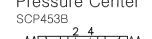


## 5Port 3Position Pneumatic Valve

Closed Center  
SCP433B



Exhaust Center  
SCP443B

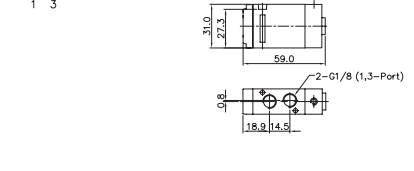


Pressure Center  
SCP453B



## 3Port 2Position Pneumatic Valve

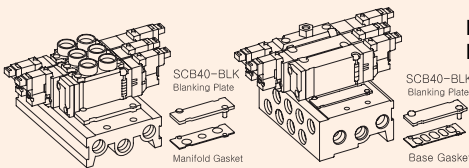
Single Pneumatic  
SCP461D



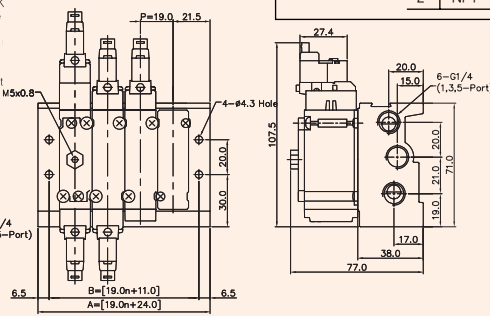
# SCB40 SINGLE, DOUBLE MANIFOLD BLOCK

(SC400 Solenoid & Pneumatic Valve Use)

## Manifold Block Dimension



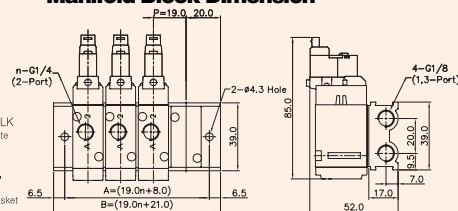
## Double Modular Manifold Block Dimension



Double Modular Sub Base Dimension

ITEM	2	4	6	8	10
B	49.0	87.0	125.0	163.0	201.0
A	62.0	100.0	138.0	176.0	214.0

## Manifold Block Dimension

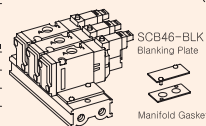


5Port Manifold Block Dimension

ITEM	2	4	6	8	10
B	46.0	84.0	122.0	160.0	198.0
A	59.0	97.0	135.0	173.0	211.0

3Port Manifold Block Dimension

ITEM	2	4	6	8	10
B	46.0	84.0	122.0	160.0	198.0
A	59.0	97.0	135.0	173.0	211.0

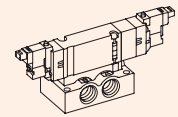


## Manifold Ordering Code

SCB4 1 - D - M04

Series	Port & Thread	Function	Manifold Station
SCB3	0 None	0 None	M02 2-Station
SC400 Solenoid Valve	1 G	S Single Station Sub Base, 1/4 Port Without Pilot Ports	M04 4-Station
	2 NPT	D Manifold, Port 1/4	M06 6-Station
		DB Double Modular Manifold Block, 1/4 Port	M08 8-Station
		DC8 Double Modular Manifold Block, Ø 8 Fitting	M10 10-Station
		D3 Manifold, Port 1/8 (3/2Way)	

## Single Station Sub Base Dimension (SCB41-S)



Ordering Code  
SCB46-BLK

- Blanking Plate (Material : STS304)
- Manifold Gasket (Material : NBR)

Ordering Code  
SCB40-BLK

- Blanking Plate (Material : STS304)
- Manifold Gasket (Material : NBR)
- Base Gasket (Material : NBR)