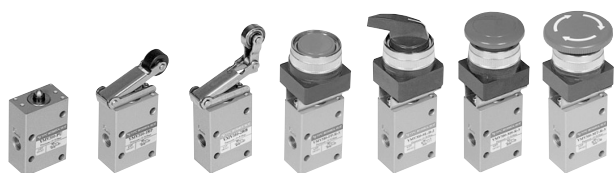


**YMV** Series  
**PMEV** Series  
**RLV** Series  
**HLV** Series  
**KMV** Series  
**TMV** Series  
**FT** Series

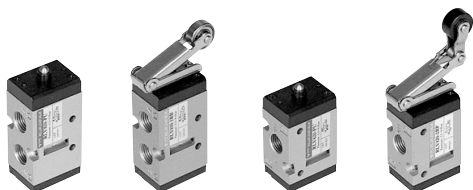
**CHAPTER 09**



**YMV Series** (3/2 Mechanically Valve)



**PMEV Series**  
 (5/2, 3/2 Panel Mounted Mechanically Valve)



**RLV Series**  
 (5/2, 3/2 Roller Lever Mechanically Valve)



**HLV Series**  
 (5/2, 5/3, 3/2 Hand Lever Operated Spool Valve)



**KMV Series**  
 (5/2, 3/2 Knob push /Pull Manually Valve)



**TMV Series**  
 (5/2, 3/2 Toggle Lever Mechanically Valve)



**FT Series**  
 (5/2 Foot Treadle Operated Spool Valve)

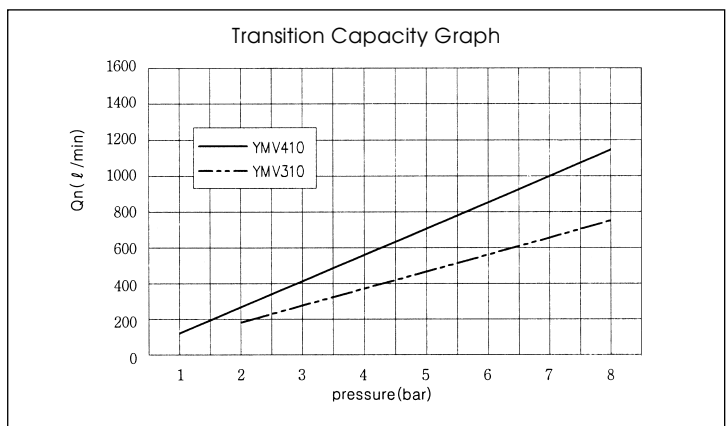
# YMV Series

Manually & Mechanically Actuated Spool Valves

- 3/2
- Direct Operation Type
- A Wide Range of Option available
- Simple Panel Mounting

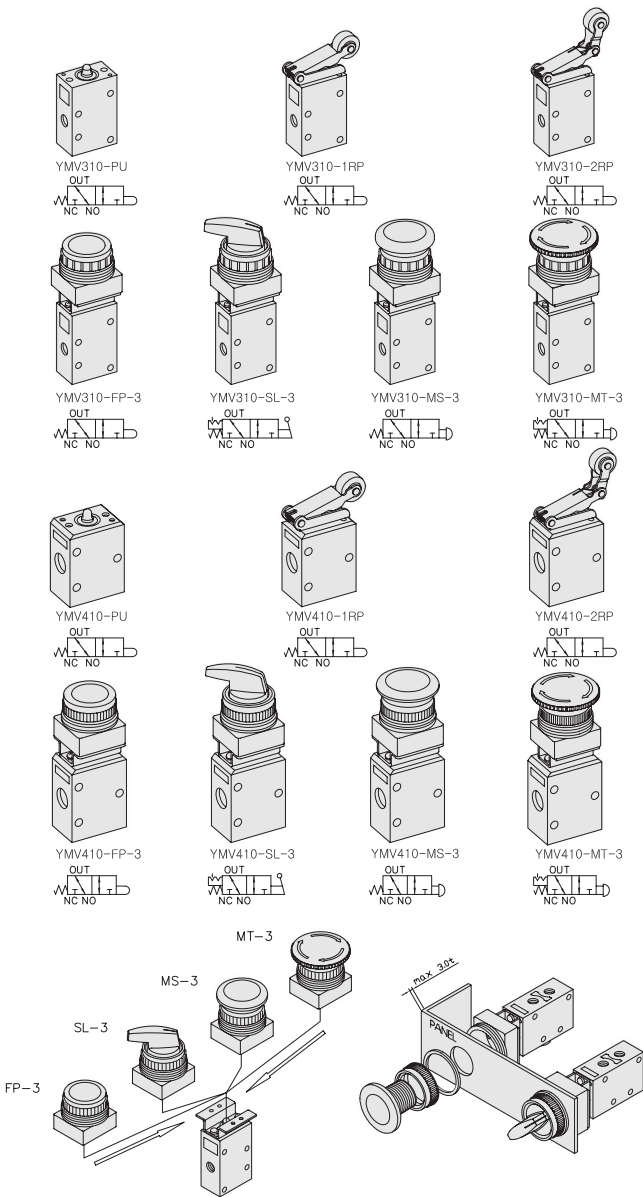
## SPECIFICATION

ITEM	SERIES	YMV310	YMV410
FUNCTION		3/2-Way	
Fluids		Compressed Air & Inert Gases	
Port Size		1/8	1/4
Pressure(bar)		0~8.0	
Eff. Sectional Area(mm <sup>2</sup> )-5bar		10.5	16.0
Ambient & Fluid Temp.		5~60°C (41~140°F)	
Lubrication		Not Required(Use ISO VG32#)	



- ### The Material of Parts
- Valve Body : Die-Cast Aluminium
  - Spool : Aluminium
  - Seals : NBR
  - Spring : Stainless
  - Button Parts : Stainless Steel, POM
  - Switch Parts : Glass Filled Nylon, POM

※ The specification on each item can be amended without any prenotice to improve a performance.  
 ※ The specification on each item can be different from actual specification.



## ORDERING NO.

**YMV3 1 0 - FP - 3**

Valve Series
YMV3: 1/8-Port Body
YMV4: 1/4-Port Body

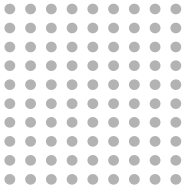
Function
1 3/2 - Spring Return

Port Size & Thread
0 G
1 NPT

Switch Type
PU Pushrod
1RP Two-way Plastic Roller Lever
1RB Two-way Bearing Roller Lever
2RP One-way Plastic Roller Lever
2RB One-way Bearing Roller Lever
FP Flush, Push Button (R)
SL 2-Position Selector (B)
MS Mushroom 40mm dia Spring Return (R)
MT Mushroom 40mm dia Turn to Unlock (R)

Mounting Holes
3 30mm

( ) Standard Color



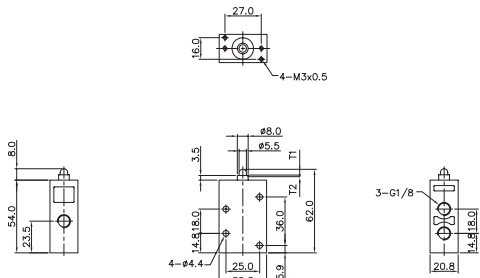
# Manually & Mechanically Actuated Spool Valves

# Port Thread 1/8, 1/4

## 3/2-Way, Direct Pushrod Operation Thread-1/8

T <sub>1</sub>	Valid Operation Dist	3.5mm
T <sub>2</sub>	Invalid Operation Dist	1.0mm
F <sub>1</sub>	Pressure for Valid Operation	3.5kg <sub>f</sub>
F <sub>2</sub>	Pressure for Invalid Operation	

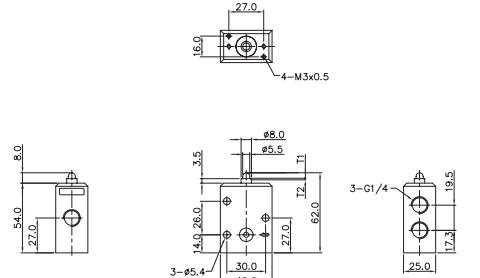
YMV310-PU



## 3/2-Way, Direct Pushrod Operation Thread-1/4

T <sub>1</sub>	Valid Operation Dist	3.5mm
T <sub>2</sub>	Invalid Operation Dist	1.0mm
F <sub>1</sub>	Pressure for Valid Operation	3.5kg <sub>f</sub>
F <sub>2</sub>	Pressure for Invalid Operation	

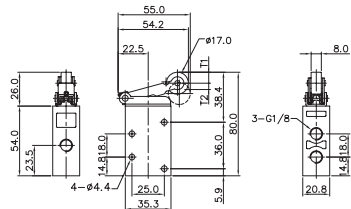
YMV410-PU



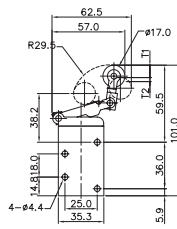
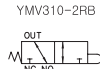
## 3/2-Way, Direct Roller Lever Operation Thread-1/8

	YMV310-1RP	YMV310-2RP
T <sub>1</sub>	Valid Operation Dist	8.5mm 9.0mm
T <sub>2</sub>	Invalid Operation Dist	3.0mm 3.5mm
F <sub>1</sub>	Pressure for Valid Operation	2.0kg <sub>f</sub> 2.0kg <sub>f</sub>
F <sub>2</sub>	Pressure for Invalid Operation	

YMV310-1RP



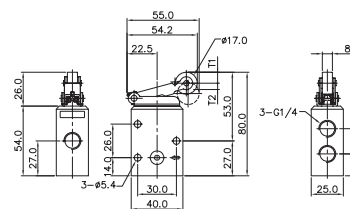
YMV310-2RP



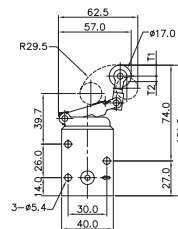
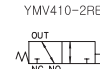
## 3/2-Way, Direct Roller Lever Operation Thread-1/4

	YMV410-1RP	YMV410-2RP
T <sub>1</sub>	Valid Operation Dist	8.0mm 9.0mm
T <sub>2</sub>	Invalid Operation Dist	3.0mm 3.5mm
F <sub>1</sub>	Pressure for Valid Operation	2.0kg <sub>f</sub> 2.0kg <sub>f</sub>
F <sub>2</sub>	Pressure for Invalid Operation	

YMV410-1RP



YMV410-2RP



## 3/2-Way, Direct Pushrod & Selector Operation Thread-1/8

T <sub>1</sub>	Valid Operation Dist	5.5mm
T <sub>2</sub>	Invalid Operation Dist	1.0mm
F <sub>1</sub>	Pressure for Valid Operation	3.5kg <sub>f</sub>
F <sub>2</sub>	Pressure for Invalid Operation	

YMV310-FP-3



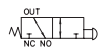
Flush, Push Button

YMV310-SL-3



2-Position Selector

YMV310-MS-3

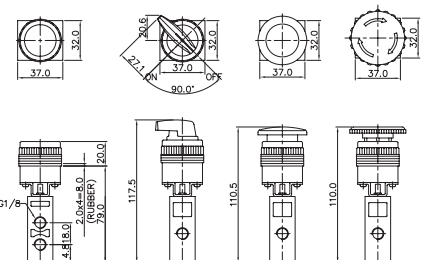


Dia Spring Return

YMV310-MT-3



Turn to unlock



## 3/2-Way, Direct Pushrod & Selector Operation Thread-1/4

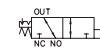
T <sub>1</sub>	Valid Operation Dist	5.5mm
T <sub>2</sub>	Invalid Operation Dist	1.0mm
F <sub>1</sub>	Pressure for Valid Operation	3.5kg <sub>f</sub>
F <sub>2</sub>	Pressure for Invalid Operation	

YMV410-FP-3



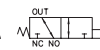
Flush, Push Button

YMV410-SL-3



2-Position Selector

YMV410-MS-3

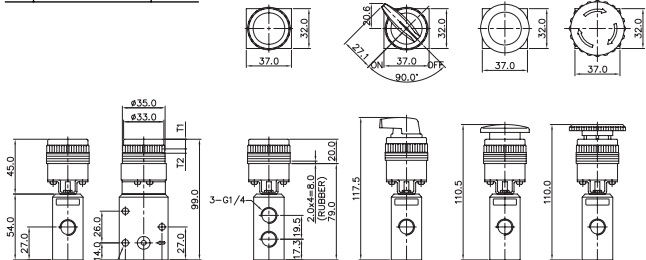


Dia Spring Return

YMV410-MT-3



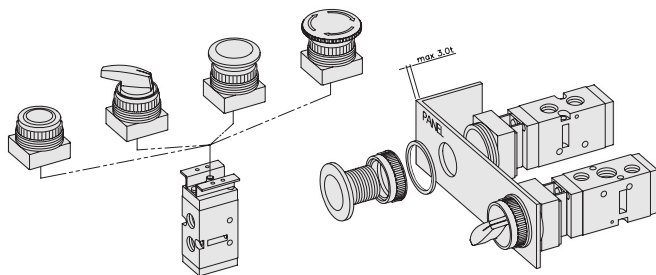
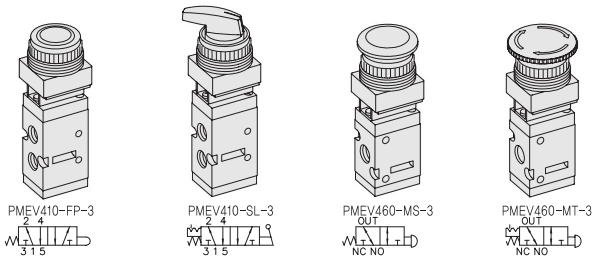
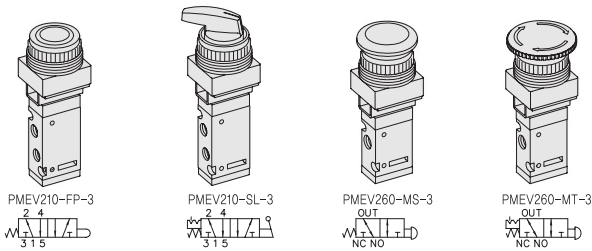
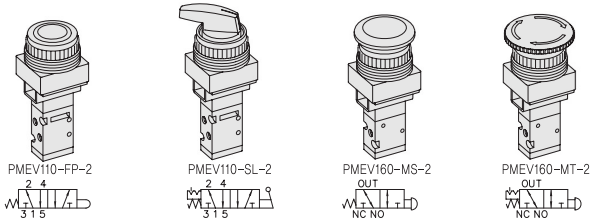
Turn to unlock



# PMEV Series

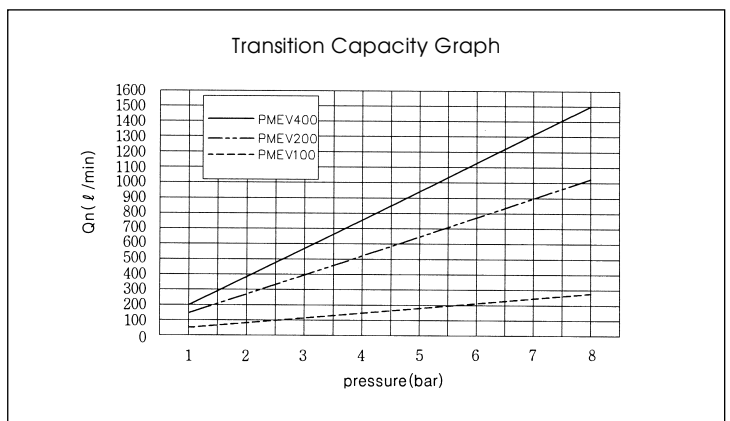
Panel Mounting Mechanically Actuated Spool Valves

- 5/2, 3/2 - M5, 1/8, 1/4
- A Wide Range of Option Available
- Direct Operation Type
- Simple Panel Mounting



## SPECIFICATION

ITEM	SERIES	PMEV100	PMEV200	PMEV400
FUNCTION		5/2, 3/2-Way		
Fluids		Compressed Air & Inert Gases		
Port Size		M5	1/8	1/4
Pressure(bar)		0~8.0		
Eff. Sectional Area(mm <sup>2</sup> )-5bar		3.5	12.6	19.0
Ambient & Fluid Temp.		5~60°C (41~140°F)		
Lubrication		Not Required(Use ISO VG32#)		



- ### The Material of Parts
- Valve Body : Die-Cast Aluminium
  - Spool : Aluminium
  - Seals : NBR
  - Spring : Stainless
  - Button Parts : Stainless Steel, POM
  - Switch Parts : Glass Filled Nylon, POM

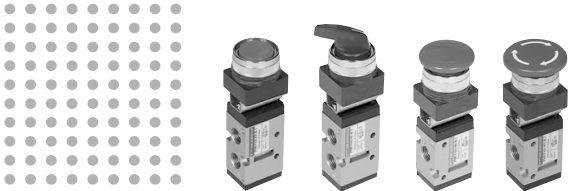
\* The specification on each item can be amended without any prenotice to improve a performance.  
 \* The specification on each item can be different from actual specification.

## ORDERING NO.

**PMEV1 1 0 - FP - 2**

Valve Series	Function	Port Size & Thread	Switch Type	Mounting Holes
PMEV1 : M5×0.8-Port Body	1 5/2 - Spring Return 6 3/2 - Spring Return	0 G 1 NPT	FP Flush, Push Button (R) SL 2-Position Selector (B) MS Mushroom 40mm dia Spring Return (R) MT Mushroom 40mm dia Turn to Unlock (R)	2 25mm 3 30mm
PMEV2 : 1/8-Port Body				
PMEV4 : 1/4-Port Body				

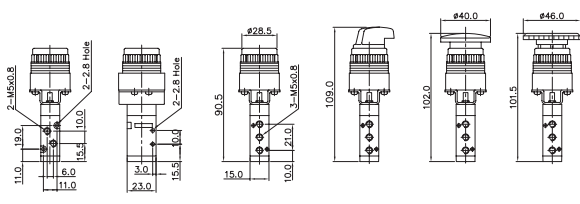
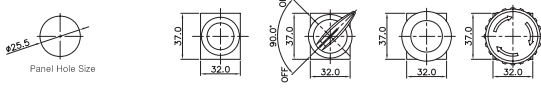
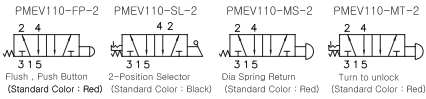
( ) Standard Color



# Panel Mounting Mechanically Actuated Spool Valves **Port Thread M5, 1/8, 1/4**

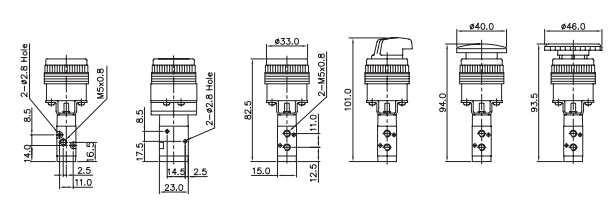
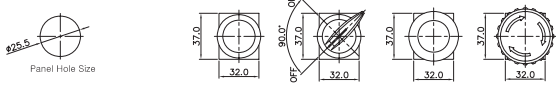
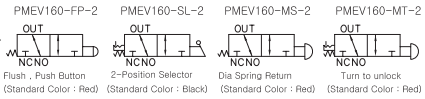
## 5/2-Way, Pushrod & Selector Operation Thread-M5 × 0.8

OPERATION SPEC.	
T <sub>1</sub> Valid Operation Dist	5.5mm
T <sub>2</sub> Invalid Operation Dist	1.0mm
F <sub>1</sub> Pressure for Valid Operation	2.5kg
F <sub>2</sub> Pressure for Invalid Operation	



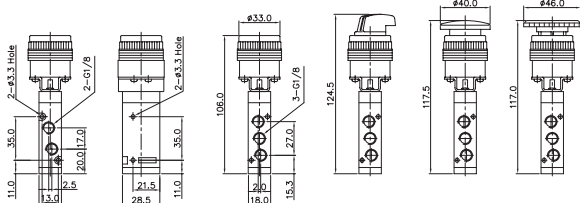
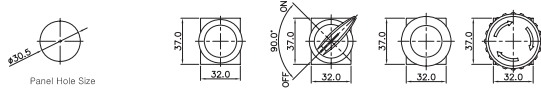
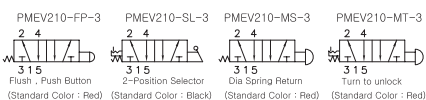
## 3/2-Way, Pushrod & Selector Operation Thread-M5 × 0.8

OPERATION SPEC.	
T <sub>1</sub> Valid Operation Dist	5.5mm
T <sub>2</sub> Invalid Operation Dist	1.0mm
F <sub>1</sub> Pressure for Valid Operation	2.5kg
F <sub>2</sub> Pressure for Invalid Operation	



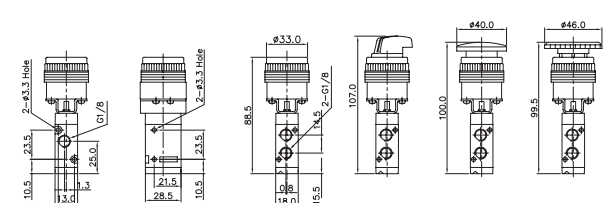
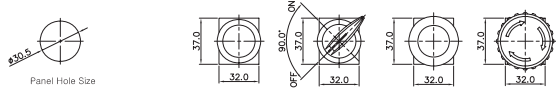
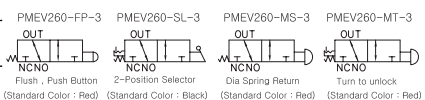
## 5/2-Way, Pushrod & Selector Operation Thread-1/8

OPERATION SPEC.	
T <sub>1</sub> Valid Operation Dist	5.5mm
T <sub>2</sub> Invalid Operation Dist	1.0mm
F <sub>1</sub> Pressure for Valid Operation	3.0kg
F <sub>2</sub> Pressure for Invalid Operation	



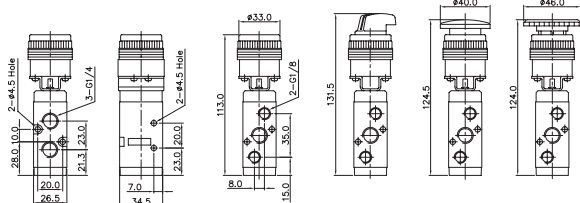
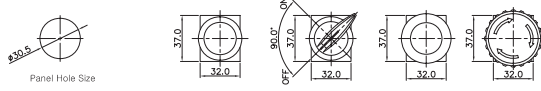
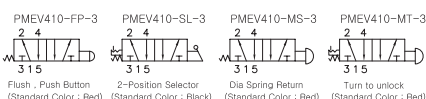
## 3/2-Way, Pushrod & Selector Operation Thread-1/8

OPERATION SPEC.	
T <sub>1</sub> Valid Operation Dist	5.5mm
T <sub>2</sub> Invalid Operation Dist	1.0mm
F <sub>1</sub> Pressure for Valid Operation	3.0kg
F <sub>2</sub> Pressure for Invalid Operation	



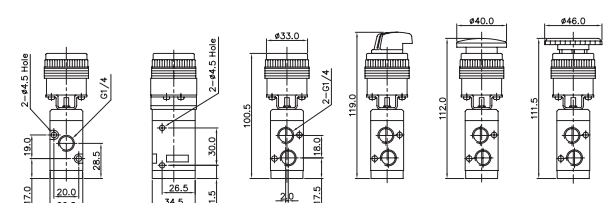
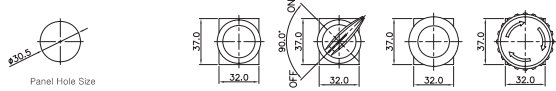
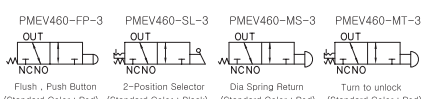
## 5/2-Way, Pushrod & Selector Operation Thread-1/4

OPERATION SPEC.	
T <sub>1</sub> Valid Operation Dist	5.5mm
T <sub>2</sub> Invalid Operation Dist	1.0mm
F <sub>1</sub> Pressure for Valid Operation	4.0kg
F <sub>2</sub> Pressure for Invalid Operation	



## 3/2-Way, Pushrod & Selector Operation Thread-1/4

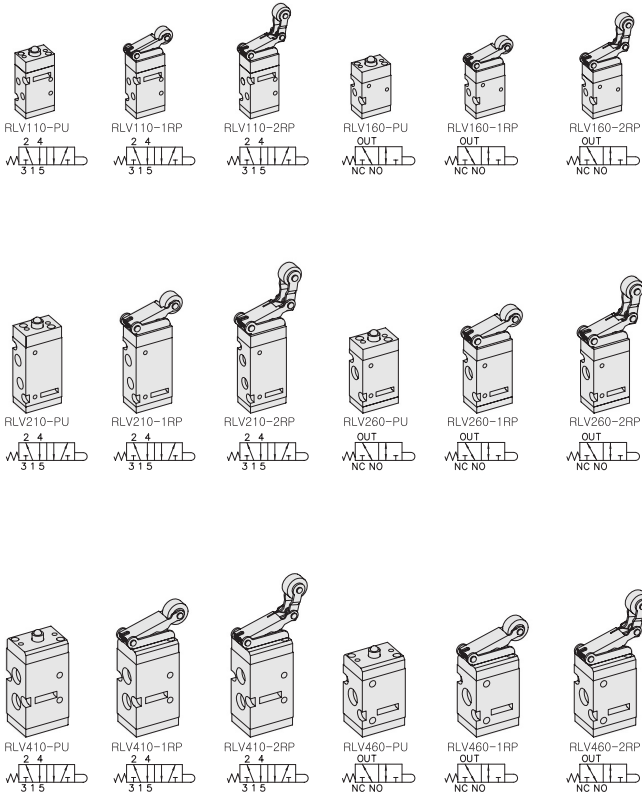
OPERATION SPEC.	
T <sub>1</sub> Valid Operation Dist	5.5mm
T <sub>2</sub> Invalid Operation Dist	1.0mm
F <sub>1</sub> Pressure for Valid Operation	4.0kg
F <sub>2</sub> Pressure for Invalid Operation	



# RLV Series

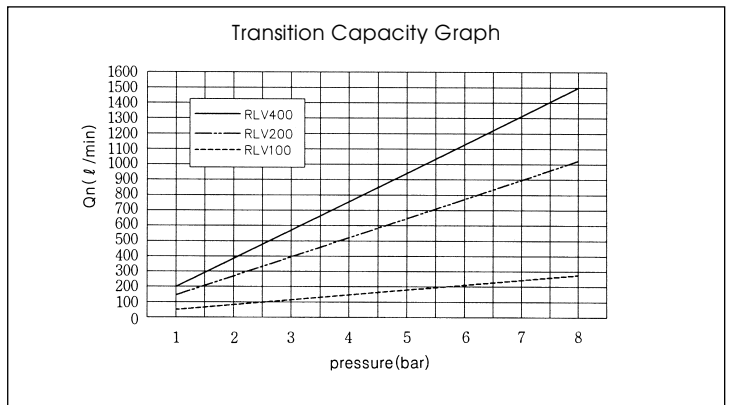
Roller Lever Mechanically Actuated Spool Valves

- 5/2, 3/2 - M5, 1/8, 1/4
- Excellent Durability
- Convient Installation
- Direct Type, Quick Response



## SPECIFICATION

ITEM	SERIES	RLV100	RLV200	RLV400
FUNCTION		5/2, 3/2-Way		
Fluids		Compressed Air & Inert Gases		
Port Size		M5	1/8	1/4
Pressure(bar)		0~8.0		
Eff. Sectional Area(mm <sup>2</sup> )-5bar		3.5	12.6	19.0
Ambient & Fluid Temp.		5~60°C (41~140°F)		
Lubrication		Not Required(Use ISO VG32#)		



- ### The Material of Parts
- Valve Body : Die-Cast Aluminium
  - Lever Parts : Steel Plate, POM
  - Spool : Aluminium
  - Pilot Parts : Glass Filled Nylon
  - Seals : NBR
  - Cap : Zinc Pressure Die-Cast
  - Spring : Stainless
  - Button Parts : Stainless Steel

\* The specification on each item can be amended without any prenotice to improve a performance.  
 \* The specification on each item can be different from actual specification.

## ORDERING NO.

**RLV1 1 0 - PU**

Valve Series	Function	Port Size & Thread	Operator / Function
RLV1 : M5×0.8-Port Body	1 5/2 - Spring Return 6 3/2 - Spring Return	0 G 1 NPT	PU Pushrod 1RP Two-way Roller Plastic Lever 1RB Two-way Roller Bearing Lever 2RP One-way Roller Plastic Lever 2RB One-way Roller Bearing Lever
RLV2 : 1/8-Port Body			
RLV4 : 1/4-Port Body			



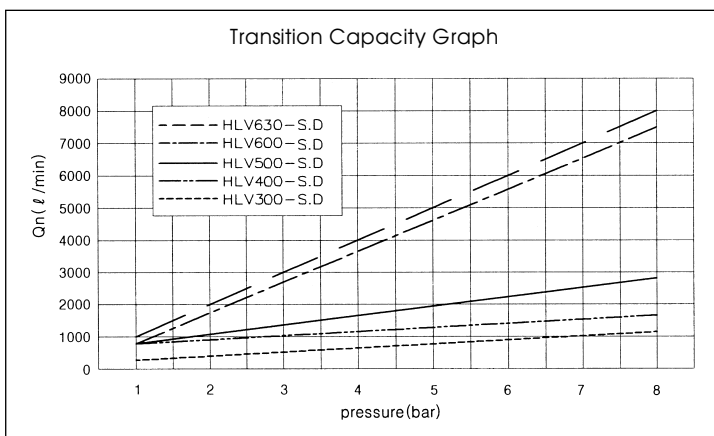
# HLV Series

Hand Lever Operated  
Spool Valves

- Direct Operation Type
- 5/2, 5/3, 3/2
- 1/8, 1/4, 3/8, 1/2
- High Flow Capacity

## SPECIFICATION

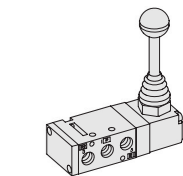
ITEM	SERIES	HLV300	HLV400	HLV500	HLV600
FUNCTION		5/2, 5/3-Way	5/2, 5/3, 3/2-Way		5/2, 5/3-Way
Fluids	Compressed Air & Inert Gases				
Port Size		1/8	1/4	3/8	1/2
Pressure(bar)	0~8.0				
Eff. Sectional Area(mm <sup>2</sup> )-5bar		13.5	18.0	35.0	90.0
Ambient & Fluid Temp.	5~60°C (41~140°F)				
Lubrication	Not Required(Use ISO VG32#)				



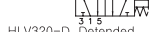
The Material of Parts

- Valve Body : Die-Cast Aluminium
- Spool : Aluminium
- Seals : NBR
- Spring : Stainless
- Lever Parts : Steel, NBR, Plastic

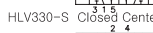
\* The specification on each item can be amended without any prenotice to improve a performance.  
\* The specification on each item can be different from actual specification.



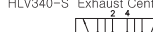
HLV310-S Single Detented



HLV320-D Detented



HLV330-S Closed Center



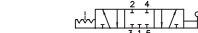
HLV340-S Exhaust Center



HLV350-S Pressure Center



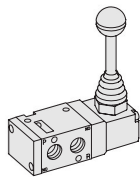
HLV330-D Closed Center



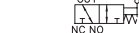
HLV340-D Exhaust Center



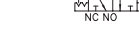
HLV350-D Pressure Center



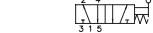
HLV460-S Single OUT



HLV460-D Detented OUT



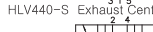
HLV410-S Single



HLV420-D Detented



HLV430-S Closed Center



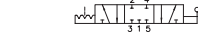
HLV440-S Exhaust Center



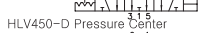
HLV450-S Pressure Center



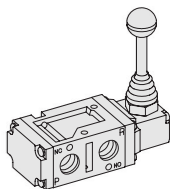
HLV430-D Closed Center



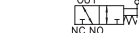
HLV440-D Exhaust Center



HLV450-D Pressure Center



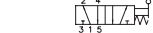
HLV560-S Single OUT



HLV560-D Detented OUT



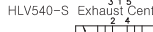
HLV510-S Single



HLV520-D Detented



HLV530-S Closed Center



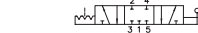
HLV540-S Exhaust Center



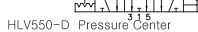
HLV550-S Pressure Center



HLV530-D Closed Center



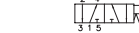
HLV540-D Exhaust Center



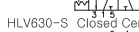
HLV550-D Pressure Center



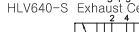
HLV610-S Single



HLV620-D Detented



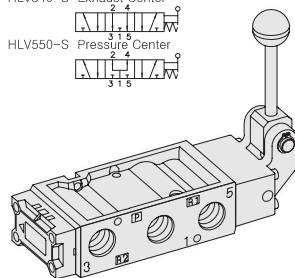
HLV630-S Closed Center



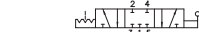
HLV640-S Exhaust Center



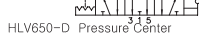
HLV650-S Pressure Center



HLV630-D Closed Center



HLV640-D Exhaust Center



HLV650-D Pressure Center



## ORDERING NO.

HLV3 1 0 - S

Valve Series

HLV3 :  
1/8-Port Body  
HLV4 :  
1/4-Port Body  
HLV5 :  
3/8-Port Body  
HLV6 :  
1/2-Port Body

Function

1	5/2 Single
2	5/2 Double
3	5/3 Closed Center
4	5/3 Open Center
5	5/3 Pressure Center
6	3/2 Normally Closed

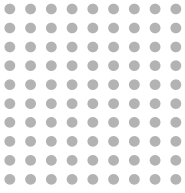
Port Size & Thread

0	G
1	NPT

Return Method

S	Single Spring Return
D	Double Detented

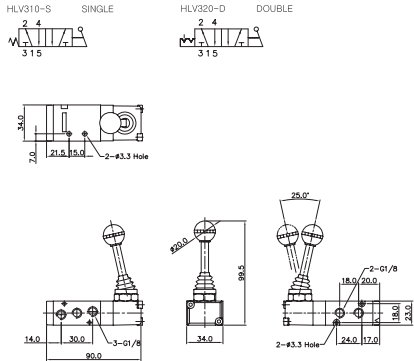




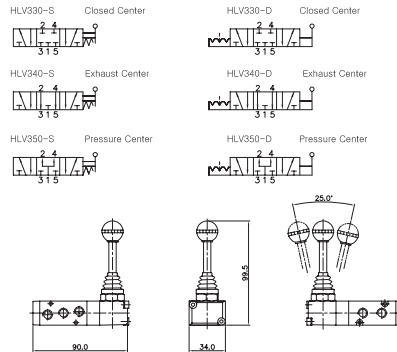
# Hand Lever Operated Spool Valves

# Port Thread 1/8, 1/4, 3/8, 1/2

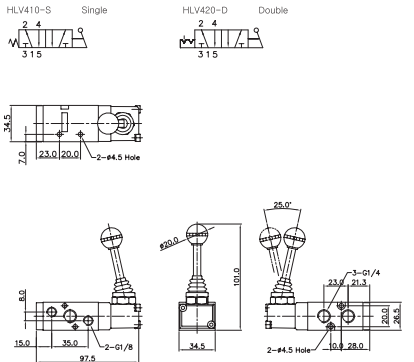
## 5/2-Way, Hand Lever Manually Actuated Valve Thread-G1/8



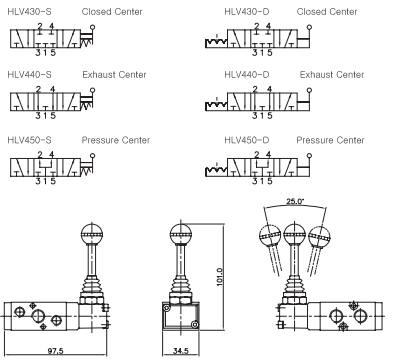
## 5/3-Way, Hand Lever Manually Actuated Valve Thread-G1/8



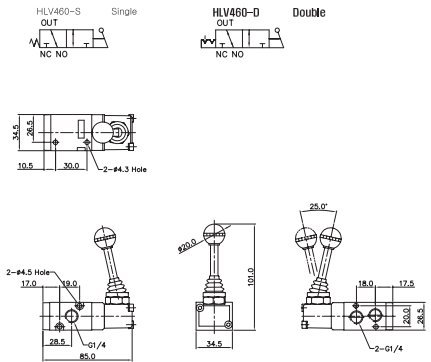
## 5/2-Way, Hand Lever Manually Actuated Valve Thread-G1/4



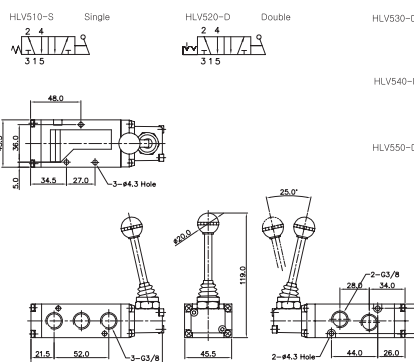
## 5/3-Way, Hand Lever Manually Actuated Valve Thread-G1/4



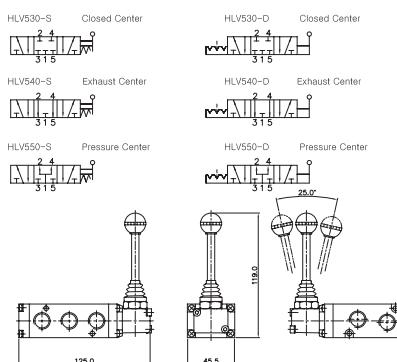
## 3/2-Way, Hand Lever Manually Actuated Valve Thread-G1/4



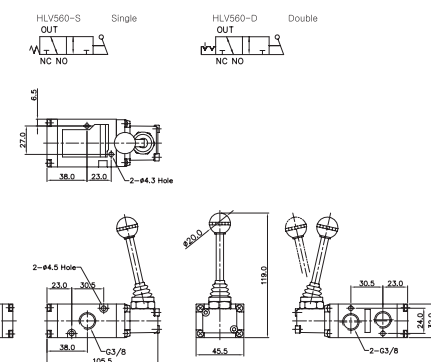
## 5/2-Way, Hand Lever Manually Actuated Valve Thread-G3/8



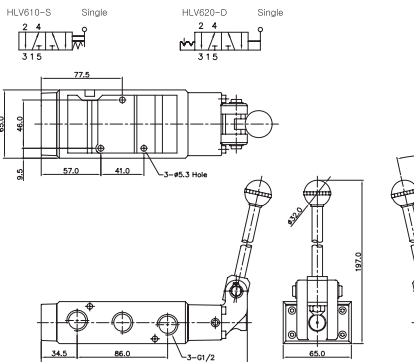
## 5/3-Way, Hand Lever Manually Actuated Valve Thread-G3/8



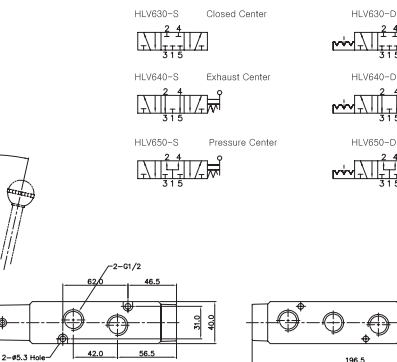
## 3/2-Way, Hand Lever Manually Actuated Valve Thread-G3/8



## 5/2-Way, Hand Lever Manually Actuated Valve Thread-G1/2



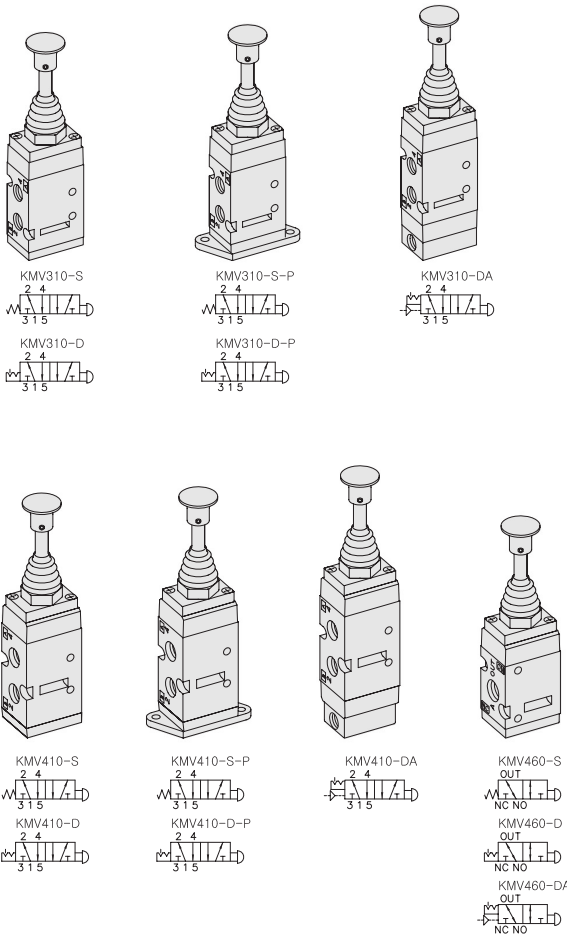
## 5/3-Way, Hand Lever Manually Actuated Valve Thread-G1/2



# KMV Series

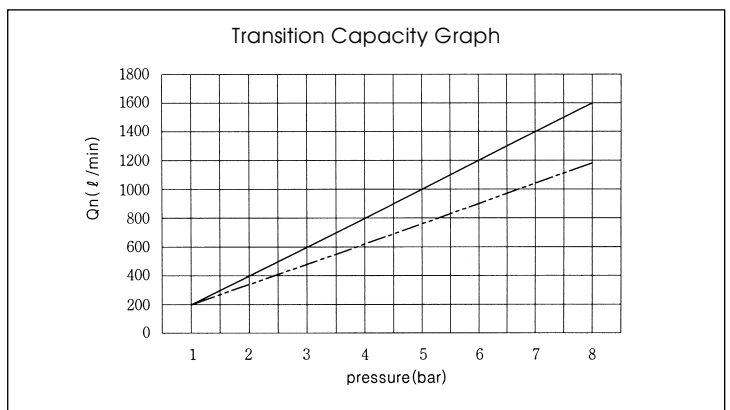
Knob Push / Pull Manually Actuated Spool Valves

- 5/2, 3/2 - 1/8, 1/4
- Direct Operation Type
- Simple Operation
- Space Economy Type

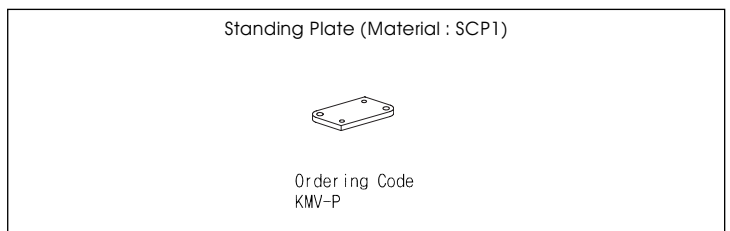


## SPECIFICATION

ITEM	FUNCTION	KMV300	KMV400
	FUNCTION		5/2-Way
Fluids		Compressed Air & Inert Gases	
Port Size		1/8	1/4
Pressure(bar)		0~8.0	
Eff. Sectional Area(mm <sup>2</sup> )-5bar		13.5	18.0
Ambient & Fluid Temp.		5~60°C (41~140°F)	
Lubrication		Not Required(Use ISO VG32#)	



- ### The Material of Parts
- Valve Body : Die-Cast Aluminium
  - Cap : Zinc Pressure Die-Cast
  - Spool : Aluminium
  - Seals : NBR
  - Spring : Stainless
  - Lever Parts : Steel, NBR, Aluminium
  - Standing Plate : Steel Plate



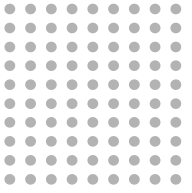
※ The specification on each item can be amended without any prenotice to improve a performance.  
 ※ The specification on each item can be different from actual specification.

## ORDERING NO.

**KMV3 1 0 - S - P**

Valve Series	Function	Port Size & Thread	Return Method	Plate
KMV3 : 1/8-Port Body	1 5/2 Single 6 3/2 Normally Closed	0 G 1 NPT	S Push, Spring Return D Push, Full DA Push, Air Return	P Standing Plate

KMV4 :  
1/4-Port Body

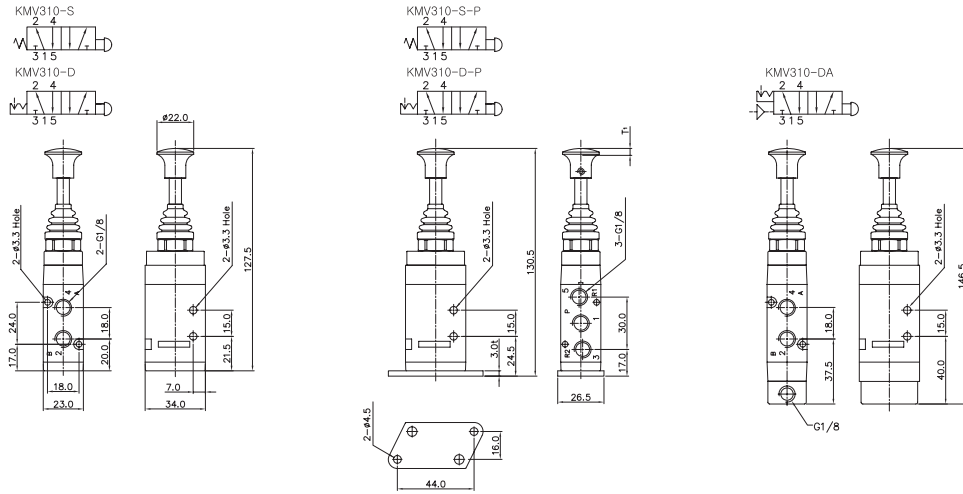


# Knob Push / Pull Manually Actuated Valves

## Port Thread 1/8, 1/4

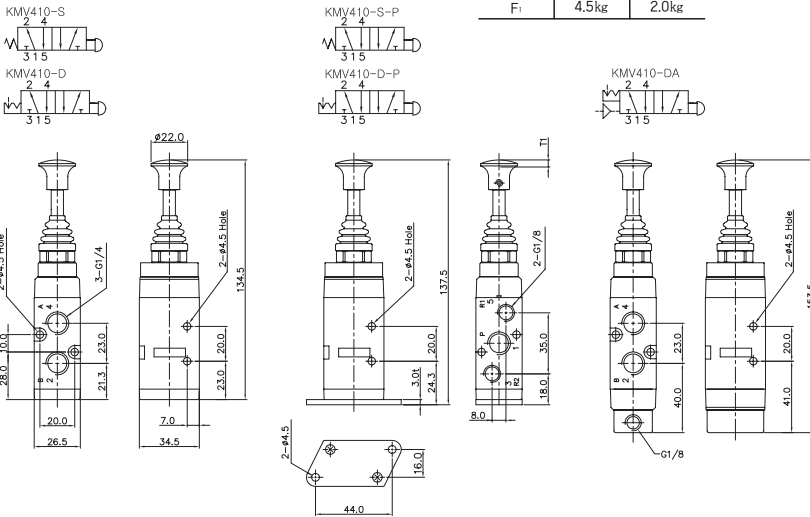
### 5/2-Way, Spring Return & Push Pull & Air Return Operation Thread-G1/8

ITEM	KMV310-S	KMV310-D
T <sub>1</sub>	4.0mm	4.0mm
F <sub>1</sub>	4.5kg	2.0kg

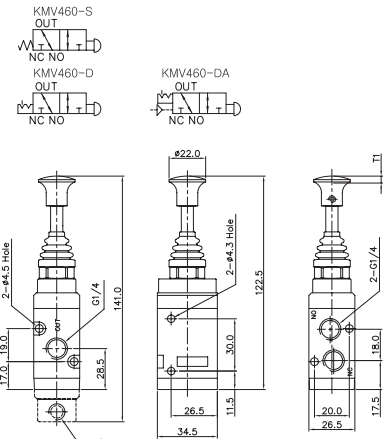


### 5/2-Way, Spring Return & Push Pull & Air Return Operation Thread-G1/4

ITEM	KMV410-S	KMV420-D
T <sub>1</sub>	4.0mm <td>4.0mm </td>	4.0mm
F <sub>1</sub>	4.5kg	2.0kg



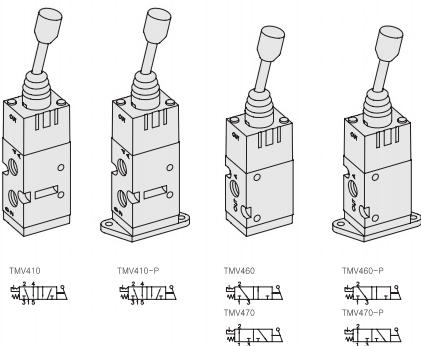
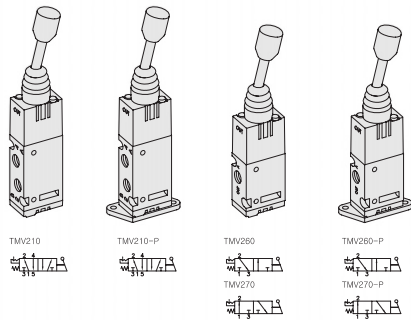
### 3/2-Way, Spring Return & Push Pull & Air Return Operation Thread-G1/4



# TMV Series

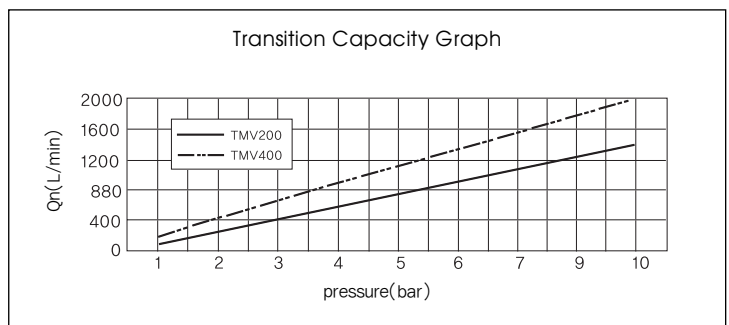
Toggle Lever operated Mechanically Actuated Spool Valves

- 5/2, 3/2 - 1/8, 1/4
- Direct Operation Type
- Simple Operation
- Manifold Mounting Type



## SPECIFICATION

ITEM	SERIES	TMV200	TMV400
	FUNCTION	5/2, 3/2-Way	
Fluids	Compressed Air & Inert Gases		
Port Size		1/8	1/4
Pressure(bar)		2.0~10.0	0~8.0
Eff. Sectional Area(mm <sup>2</sup> )-5bar		9.0	18.0
Ambient & Fluid Temp.	5~60°C (41~140°F)		
Lubrication	Not Required(Use ISO VG32#)		



- ### The Material of Parts
- Valve Body : Die-Cast Aluminium
  - Cap : Zinc Pressure Die-Cast
  - Spool : Aluminium
  - Seals : NBR
  - Spring : Stainless
  - Lever Parts : Steel, NBR, Aluminium

Standing Plate (Material : SCP1)

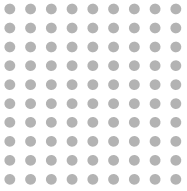
Ordering Code  
TMV-P

\* The specification on each item can be amended without any prenotice to improve a performance.  
\* The specification on each item can be different from actual specification.

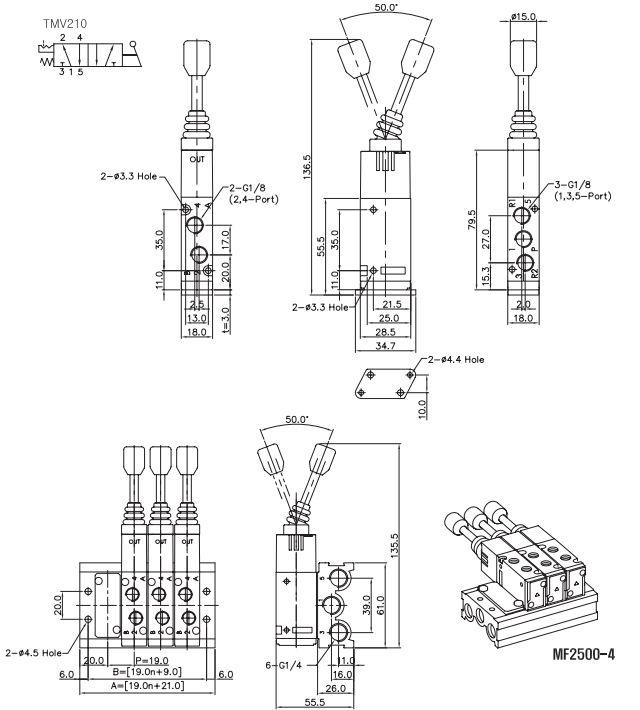
## ORDERING NO.

TMV2 1 - 0 - P

Valve Series	Function	Port Size & Thread	Plate												
<b>TMV2 :</b> 1/8-Port Body	<table border="1" style="width: 100%; border-collapse: collapse;"> <tr><td>1</td><td>5/2 Single</td></tr> <tr><td>6</td><td>3/2 Normally Closed</td></tr> <tr><td>7</td><td>3/2 Normally Open</td></tr> </table>	1	5/2 Single	6	3/2 Normally Closed	7	3/2 Normally Open	<table border="1" style="width: 100%; border-collapse: collapse;"> <tr><td>0</td><td>G</td></tr> <tr><td>1</td><td>NPT</td></tr> </table>	0	G	1	NPT	<table border="1" style="width: 100%; border-collapse: collapse;"> <tr><td>P</td><td>Standing Plate</td></tr> </table>	P	Standing Plate
1	5/2 Single														
6	3/2 Normally Closed														
7	3/2 Normally Open														
0	G														
1	NPT														
P	Standing Plate														
<b>TMV4 :</b> 1/4-Port Body															



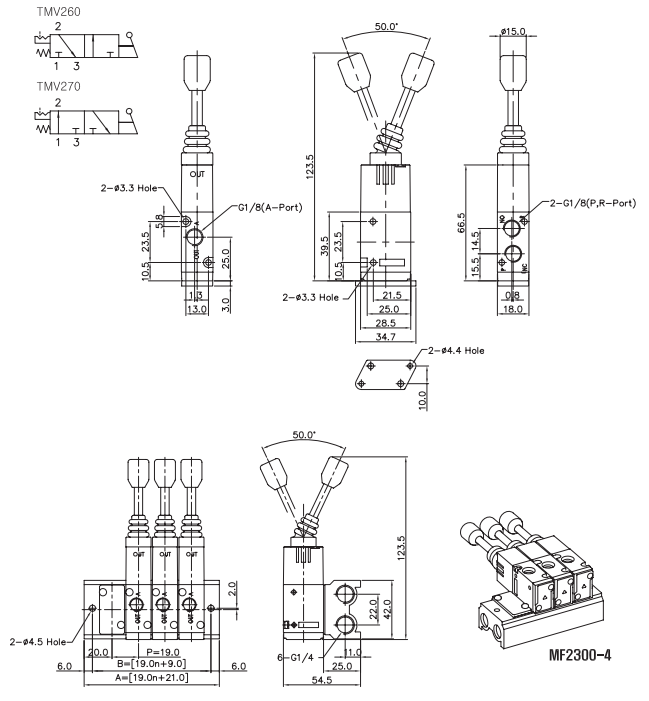
### 5/2-Way, Toggle Lever Manually Actuated Valve Thread-G1/8



5 PORT MANIFOLD BLOCK DIMENSION n=STATION

ITEM	n	2	4	6	8	10	12	14
B		47.0	85.0	123.0	161.0	199.0	237.0	275.0
A		59.0	97.0	135.0	173.0	211.0	249.0	287.0

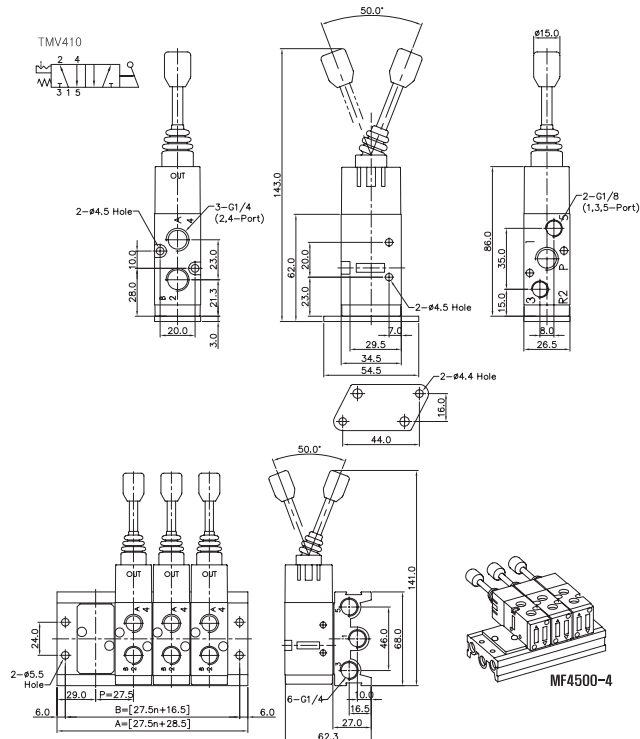
### 3/2-Way, Toggle Lever Manually Actuated Valve Thread-G1/8



3 PORT MANIFOLD BLOCK DIMENSION n=STATION

ITEM	n	2	4	6	8	10	12	14
B		47.0	85.0	123.0	161.0	199.0	237.0	275.0
A		59.0	97.0	135.0	173.0	211.0	249.0	287.0

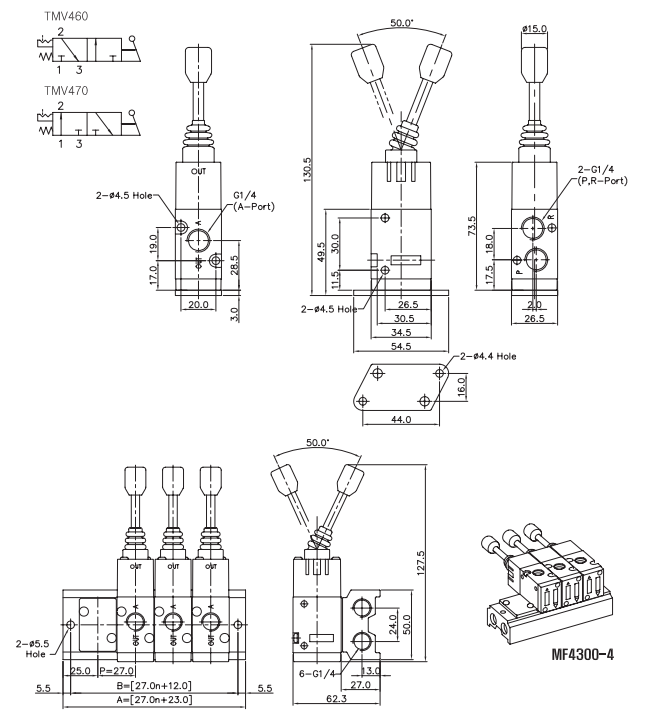
### 5/2-Way, Toggle Lever Manually Actuated Valve Thread-G1/4



5 PORT MANIFOLD BLOCK DIMENSION n=STATION

ITEM	n	2	4	6	8	10	12	14
B		71.5	126.5	181.5	236.5	291.5	346.5	401.5
A		83.5	138.5	193.5	248.5	303.5	358.5	413.5

### 3/2-Way, Toggle Lever Manually Actuated Valve Thread-G1/4



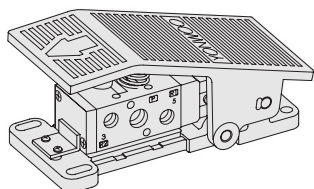
3 PORT MANIFOLD BLOCK DIMENSION n=STATION

ITEM	n	2	4	6	8	10	12	14
B		66.0	120.0	174.0	228.0	282.0	336.0	390.0
A		77.0	131.0	185.0	239.0	293.0	347.0	401.0

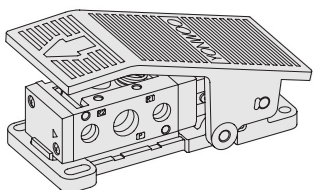
# FT Series

Foot Treadle Operated  
Air Return & Spring Return Spool Valves

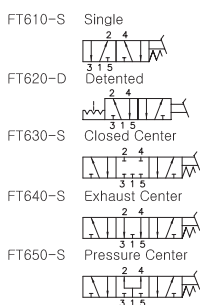
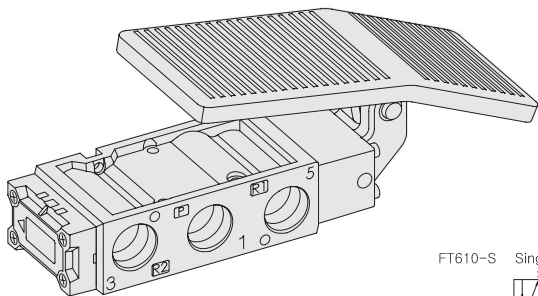
- 5/2, 5/3
- Pilot Type - 1/4, 3/8
- Direct Operation Type - 1/2
- Excellent Durability



FT410-S  
2 4  
3 1 5

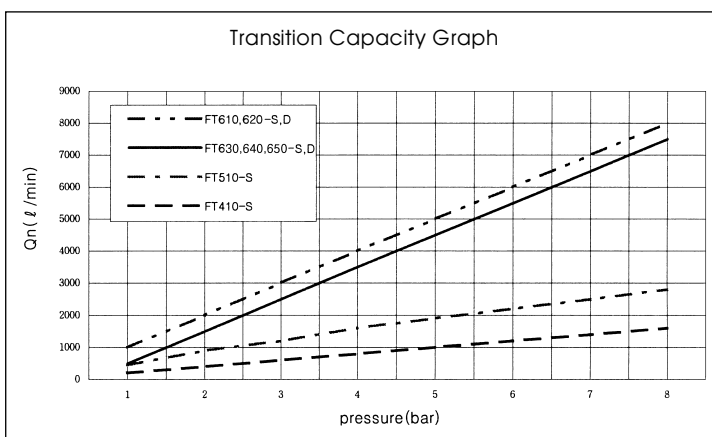


FT510-S  
2 4  
3 1 5



## SPECIFICATION

ITEM	SERIES	FT410-S	FT510-S	FT600-S, D
	FUNCTION	5/2-Way		5/2, 5/3-Way
Fluids	Compressed Air & Inert Gases			
Port Size		1/4	3/8	1/2
Pressure(bar)		1.5~8.0		0~8.0
Eff. Sectional Area(mm <sup>2</sup> )-5bar		19.0	35.0	90.0
Ambient & Fluid Temp.	5~60°C (41~140°F)			
Lubrication	Not Required(Use ISO VG32#)			



## The Material of Parts

- Valve Body : Die-Cast Aluminium
- Spool : Aluminium
- Seals : NBR
- Spring : Stainless
- Cap : Zinc Pressure Die-Cast
- Pilot parts : Glass Filled Nylon
- Foot Upper Plate : Die-Cast Aluminium
- Foot Low Plate : Zinc Pressure Die-Cast

\* The specification on each item can be amended without any prenotice to improve a performance.  
\* The specification on each item can be different from actual specification.

## ORDERING NO.

**FT4 1 0 - S**

### Valve Series

FT4 :  
1/4-Port Body

FT5 :  
3/8-Port Body

FT6 :  
1/2-Port Body

### Function

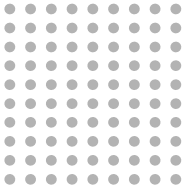
1	5/2 Single
2	5/2 Double
3	5/3 Closed Center
4	5/3 Open Center
5	5/3 Pressure Center

### Port Size & Thread

0	G
1	NPT

### Return Method

S	Spring Return
D	Detented

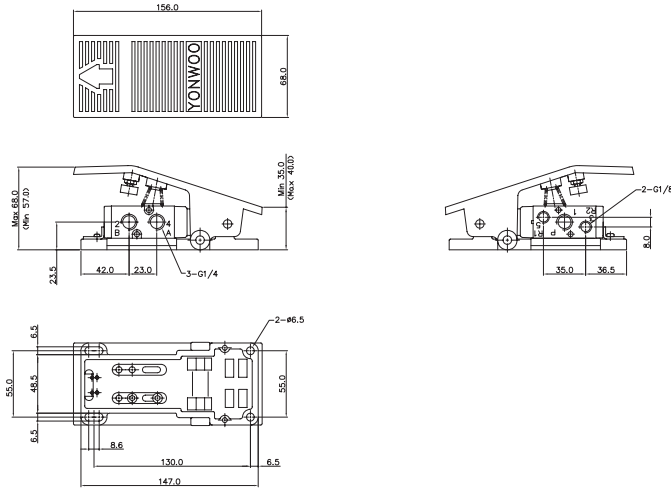
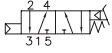


# Foot Treadle Operated Spool Valves

Port Thread 1/4, 3/8, 1/2

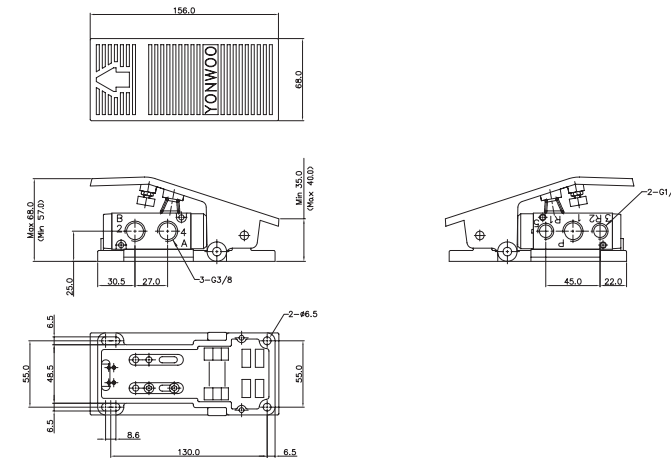
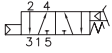
## 5/2-Way, Foot Valve, Air Return Operation Thread-G1/4

FT410-S



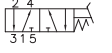
## 5/2-Way, Foot Valve, Air Return Operation Thread-G3/8

FT510-S

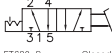


## 5/2-Way, Foot Valve, Spring Return & Detented Operation Thread-G1/2

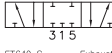
FT610-S



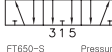
FT620-D



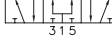
FT630-S



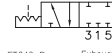
FT640-S



FT650-S



FT630-D



FT640-D



FT650-D

