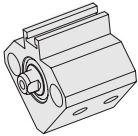


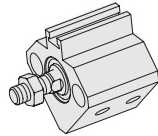
# YC(D)Q2 Series

Compact Cylinder

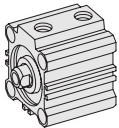
- In Magnet, Without Magnet
- Female(Standard), Male Thread



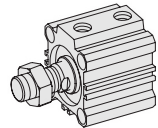
YQC2B-12x5D~YQC2B-12x30D  
YCDQ2B-12x5D~YCDQ2B-12x30D  
(ø12, ø16, ø20, ø25)



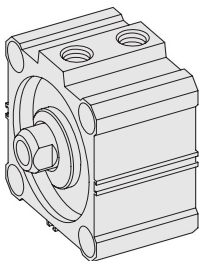
YQC2B-12x5DM~YQC2B-12x30DM  
YCDQ2B-12x5DM~YCDQ2B-12x30DM  
(ø12, ø16, ø20, ø25)



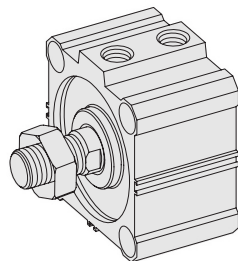
YQC2B-32x5D~YQC2B-32x50D  
YCDQ2B-32x5D~YCDQ2B-32x50D  
(ø32, ø40)



YQC2B-32x5DM~YQC2B-32x50DM  
YCDQ2B-32x5DM~YCDQ2B-32x50DM  
(ø32, ø40)



YQC2B-50x10D~YQC2B-50x50D  
YCDQ2B-50x10D~YCDQ2B-50x50D  
(ø50, ø63, ø80)



YQC2B-50x10DM~YQC2B-50x50DM  
YCDQ2B-50x10DM~YCDQ2B-50x50DM  
(ø50, ø63, ø80)

## SPECIFICATION

Fluids	Air
Certified Pressure	15bar
Maximum Operation Pressure	10bar
Minimum Operation Pressure	0.5bar (ø12, ø16 : 0.7bar)
Ambient & Fluid Temp.	5~60°C (41~140°F)
Lubrication	Not Required(Use ISO VG32#)
Cussion	None
Rod End Screw	Female Nut(standard), male Nut(option)
Tolerance of Screw	2nd grade of KS
Allowance of Stroke Distance	+1
Supporting Type	Standard
Mounting	Pierce(Basic), Both Ends Tap(Optional)

### The Material of Parts

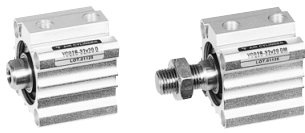
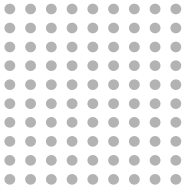
- Tube : Aluminium Extruding
- Piston : Aluminium
- Piston Rod : ø12~ø25-ST304  
ø32~ø80-Carbon Iron
- Seals : NBR
- Snap Ring : HSWR1
- Hex Nut : Carbon Iron
- Bush : DU Bush
- Head Cover : Aluminium
- Magnet : Rubber Magnet

\* The specification on each item can be amended without any prenotice to improve a performance.  
\* The specification on each item can be different from actual specification.

## ORDERING NO.

YCDQ2 **B** - **20** × **30** **D** **M**

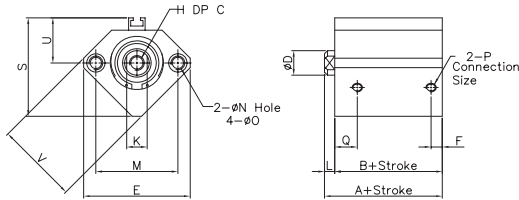
Magnet is Attached or Not		Mounting		Tube Diameter	Cylinder Stroke			Operating Method		Rod Type	
YQC2	Non Built-in	A	Both Ends Tap	12 : 12mm	Cylinder diameter	Cylinder Stroke(mm)	Port Size & Thread	D	Double-acting type	Non-marked	Nut(Basic)
YCDQ2	Built-in	B	Pierce	16 : 16mm	ø12, ø16	5, 10, 15, 20, 25, 30				M5×0.8	M
				20 : 20mm	ø20, ø25	5, 10, 15, 20, 25, 30, 35, 40, 45, 50					
				25 : 25mm	ø32, ø40	5, 10, 15, 20, 25, 30, 35, 40, 45, 50, 75, 100					
				32 : 32mm	ø50, ø63	10, 15, 20, 25, 30, 35, 40, 45, 50, 75, 100					
				40 : 40mm	ø80	10, 15, 20, 25, 30, 35, 40, 45, 50, 75, 100					
				50 : 50mm							
				63 : 63mm							
				80 : 80mm							



# YC(D)Q2 Series

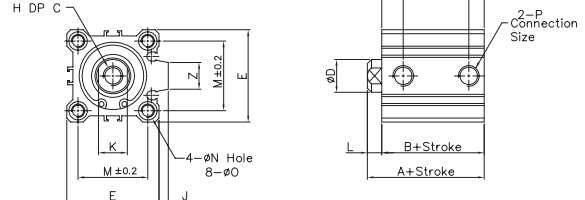
## Non Built-in Magnet Dimension

YCQ2B-00 × 00D(M)  $\phi$ 12,  $\phi$ 16,  $\phi$ 20,  $\phi$ 25



## Non Built-in Magnet Dimension

YCQ2B-00 × 00D(M)  $\phi$ 32,  $\phi$ 40,  $\phi$ 50,  $\phi$ 63,  $\phi$ 80

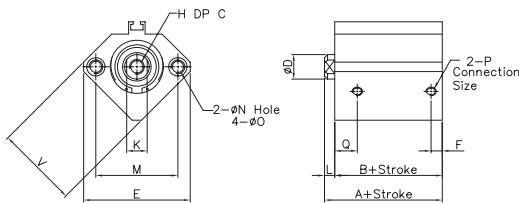


### Outside Dimension

Bore Size(mm)	Stroke Range(mm)	A	B	∅D	E	F	H	C	∅I	J	K	L	M	∅N	∅O	P	Q	S	U	V	Z	'B'	'C'	'E'	'G'	'H'	'L'	'X'
YCDQ2-12	5~30	20.5	17.0	6	32.0	5.0	M3×0.5	6	-	-	5	3.5	22	3.5	6.5 DP 3.5	M5×0.8	10.5	-	-	25	-	8	9.0	9.2	4	M5×0.8	14.0	10.5
YCDQ2-16	5~30	22.0	18.5	8	38.0	5.5	M4×0.7	8	-	-	6	3.5	28	3.5	6.5 DP 3.6	M5×0.8	10.0	-	-	29	-	10	10.0	9.2	5	M6×1.0	15.5	12.0
YCDQ2-20	5~50	24.0	19.5	10	46.8	5.5	M5×0.8	7	-	-	8	4.5	36	5.5	9.0 DP 7.0	M5×0.8	10.5	-	-	36	-	13	12.0	15.0	5	M8×1.25	18.5	14.0
YCDQ2-25	5~50	27.5	22.5	12	52.0	5.5	M6×1.0	12	-	-	10	5.0	40	5.5	9.0 DP 7.0	M5×0.8	11.0	-	-	40	-	17	15.0	19.6	6	M10×1.25	22.5	17.5
YCDQ2-32	5~100	30.0	23.0	16	45.0	7.5	M8×1.25	13	60	4.5	14	7.0	34	5.5	9.0 DP 7.0	G1/8	10.5	49.5	-	-	18	22	20.5	25.4	8	M14×1.5	28.5	23.5
YCDQ2-40	5~100	36.5	29.5	16	52.0	8.0	M8×1.25	13	69	5.0	14	7.0	40	5.5	9.0 DP 7.0	G1/8	12.0	57.0	-	-	18	22	20.5	25.4	8	M14×1.5	28.5	23.5
YCDQ2-50	10~100	38.5	30.5	20	64.0	10.5	M10×1.5	15	86	7.0	17	8.0	50	6.6	11.0 DP 8.0	G1/4	11.5	71.0	-	-	22	27	26.0	31.5	11	M18×1.5	33.5	28.5
YCDQ2-63	10~100	44.0	36.0	20	77.0	10.5	M10×1.5	15	103	7.0	17	8.0	60	9.0	14.0 DP 10.5	G1/4	15.0	84.0	-	-	22	27	26.0	31.2	11	M18×1.5	33.5	28.5
YCDQ2-80	10~100	53.0	43.5	25	98.0	12.5	M16×2.0	21	132	6.0	22	10.0	77	11.0	17.5 DP 13.5	G3/8	16.0	104.0	-	-	26	32	32.5	37.0	13	M22×1.5	43.5	35.5

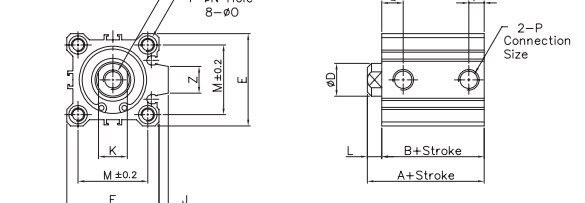
## Built-in Magnet Dimension

YCDQ2B-00 × 00D(M)  $\phi$ 12,  $\phi$ 16,  $\phi$ 20,  $\phi$ 25



## Built-in Magnet Dimension

YCDQ2B-00 × 00D(M)  $\phi$ 32,  $\phi$ 40,  $\phi$ 50,  $\phi$ 63,  $\phi$ 80

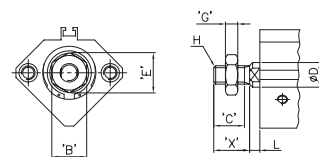


### Outside Dimension

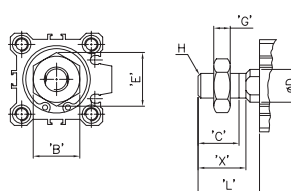
Bore Size(mm)	Stroke Range(mm)	A	B	∅D	E	F	H	C	∅I	J	K	L	M	∅N	∅O	P	Q	S	U	V	Z	'B'	'C'	'E'	'G'	'H'	'L'	'X'
YCDQ2-12	5~30	31.5	28.0	6	32.0	5.0	M3×0.5	6	-	-	5	3.5	22	3.5	6.5 DP 3.5	M5×0.8	10.5	35.5	19.5	25	-	8	9.0	9.2	4	M5×0.8	14.0	10.5
YCDQ2-16	5~30	34.0	30.0	8	38.0	5.5	M4×0.7	8	-	-	6	3.5	28	3.5	6.5 DP 3.6	M5×0.8	10.0	41.5	22.5	29	-	10	10.0	9.2	5	M6×1.0	15.5	12.0
YCDQ2-20	5~50	36.0	31.5	10	46.8	5.5	M5×0.8	7	-	-	8	4.5	36	5.5	9.0 DP 7.0	M5×0.8	10.5	48.0	24.5	36	-	13	12.0	15.0	5	M8×1.25	18.5	14.0
YCDQ2-25	5~50	37.5	32.5	12	52.0	5.5	M6×1.0	12	-	-	10	5.0	40	5.5	9.0 DP 7.0	M5×0.8	11.0	53.5	27.5	40	-	17	15.0	19.6	6	M10×1.25	22.5	17.5
YCDQ2-32	5~100	40.0	33.0	16	45.0	7.5	M8×1.25	13	60	4.5	14	7.0	34	5.5	9.0 DP 7.0	G1/8	10.5	58.5	31.5	-	18	22	20.5	25.4	8	M14×1.5	28.5	23.5
YCDQ2-40	5~100	46.5	39.5	16	52.0	8.0	M8×1.25	13	69	5.0	14	7.0	40	5.5	9.0 DP 7.0	G1/8	12.0	66.0	35.0	-	18	22	20.5	25.4	8	M14×1.5	28.5	23.5
YCDQ2-50	10~100	48.5	40.5	20	64.0	10.5	M10×1.5	15	86	7.0	17	8.0	50	6.6	11.0 DP 8.0	G1/4	11.5	80.0	41.0	-	22	27	26.0	31.5	11	M18×1.5	33.5	28.5
YCDQ2-63	10~100	54.0	46.0	20	77.0	10.5	M10×1.5	15	103	7.0	17	8.0	60	9.0	14.0 DP 10.5	G1/4	15.0	93.0	47.5	-	22	27	26.0	31.2	11	M18×1.5	33.5	28.5
YCDQ2-80	10~100	63.5	53.5	25	98.0	12.5	M16×2.5	21	132	6.0	22	10.0	77	11.0	17.5 DP 13.5	G3/8	16.0	112.5	57.5	-	26	32	32.5	37.0	13	M22×1.5	43.5	35.5

## Male Screw Outside Dimension

$\phi$ 12,  $\phi$ 16,  $\phi$ 20,  $\phi$ 25

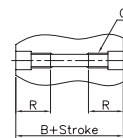


$\phi$ 32,  $\phi$ 40,  $\phi$ 50,  $\phi$ 63,  $\phi$ 80



## Both Ends Tap Dimension

Bore Size	O	R
12	M4×0.7	10
16	M4×0.7	10
25	M6×1.0	17
30	M6×1.0	17
32	M6×1.0	17
40	M6×1.0	17
50	M8×1.25	20
63	M10×1.5	20
80	M12×1.75	25



Both Ends Type